

Anti-Girdin (Ser-1416), Phosphospecific Antibody
Catalog # AN1801**Specification****Anti-Girdin (Ser-1416), Phosphospecific Antibody - Product Information**

Primary Accession	Q3V6T2
Reactivity	Bovine
Host	Rabbit
Clonality	Rabbit Polyclonal
Isotype	IgG
Calculated MW	216042

Anti-Girdin (Ser-1416), Phosphospecific Antibody - Additional InformationGene ID **55704****Other Names**

APE, Galpha, vesicle, GIV, Girders actin filament, HkRP1, GRDN, CCDC88A

Target/Specificity

Girdin, a member of the CCDC88 (Hook related protein) family, is an actin binding protein involved with cell migration and maintaining cytoskeletal organization. Girdin has conserved domains at the N- and C-terminus that bind microtubules and actin, respectively. It enhances PI3-kinase dependent phosphorylation of proteins, most notably Akt. This same activity can contribute to tumor proliferation, invasion, and metastasis in breast, ovarian, prostate, and pancreatic tissues. Girdin is phosphorylated at three separate locations: Ser-1416, Ser-1674, and Tyr-1764. Ser-1416 is the primary Akt phosphorylation site, while Cyclin-dependent kinases interact with Girdin and phosphorylate Ser-1674. Multiple receptor tyrosine kinases can bind girdin and phosphorylate Tyr-1764.

Storage

Maintain refrigerated at 2-8°C for up to 6 months. For long term storage store at -20°C in small aliquots to prevent freeze-thaw cycles.

Precautions

Anti-Girdin (Ser-1416), Phosphospecific Antibody is for research use only and not for use in diagnostic or therapeutic procedures.

Shipping

Blue Ice

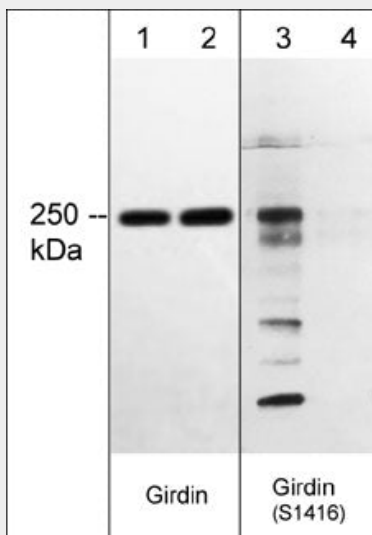
Anti-Girdin (Ser-1416), Phosphospecific Antibody - Protocols

Provided below are standard protocols that you may find useful for product applications.

- [Western Blot](#)
- [Blocking Peptides](#)
- [Dot Blot](#)
- [Immunohistochemistry](#)

- [Immunofluorescence](#)
- [Immunoprecipitation](#)
- [Flow Cytometry](#)
- [Cell Culture](#)

Anti-Girdin (Ser-1416), Phosphospecific Antibody - Images



Western blot image of human A431 cell lysates treated with Calyculin A (lanes 1-4). The blot was treated with lambda phosphatase to dephosphorylate Girdin phosphosites (lanes 2 & 4). The blot was probed with mouse monoclonal anti-Girdin (lanes 1 & 2) or rabbit polyclonal anti-Girdin (Ser-1416), phospho-specific (lanes 3 & 4).

Anti-Girdin (Ser-1416), Phosphospecific Antibody - Background

Girdin, a member of the CCDC88 (Hook related protein) family, is an actin binding protein involved with cell migration and maintaining cytoskeletal organization. Girdin has conserved domains at the N- and C-terminus that bind microtubules and actin, respectively. It enhances PI3-kinase dependent phosphorylation of proteins, most notably Akt. This same activity can contribute to tumor proliferation, invasion, and metastasis in breast, ovarian, prostate, and pancreatic tissues. Girdin is phosphorylated at three separate locations: Ser-1416, Ser-1674, and Tyr-1764. Ser-1416 is the primary Akt phosphorylation site, while Cyclin-dependent kinases interact with Girdin and phosphorylate Ser-1674. Multiple receptor tyrosine kinases can bind girdin and phosphorylate Tyr-1764.