

Anti-Myosin 13/Extraocular Myosin (C-terminal region) Antibody
Catalog # AN1849**Specification****Anti-Myosin 13/Extraocular Myosin (C-terminal region) Antibody - Product Information**

Primary Accession	B1AR69
Reactivity	Bovine
Host	Rabbit
Clonality	Rabbit Polyclonal
Isotype	IgG

Anti-Myosin 13/Extraocular Myosin (C-terminal region) Antibody - Additional Information**Other Names**

Myh13, myosin heavy chain

Storage

Maintain refrigerated at 2-8°C for up to 6 months. For long term storage store at -20°C in small aliquots to prevent freeze-thaw cycles.

Precautions

Anti-Myosin 13/Extraocular Myosin (C-terminal region) Antibody is for research use only and not for use in diagnostic or therapeutic procedures.

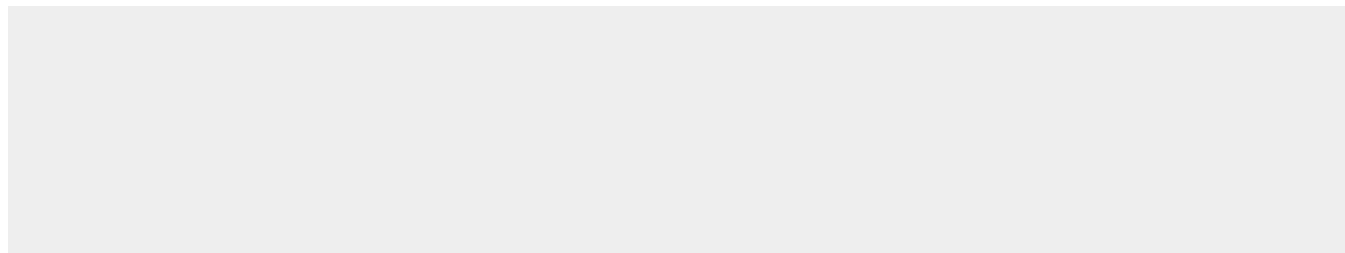
Shipping

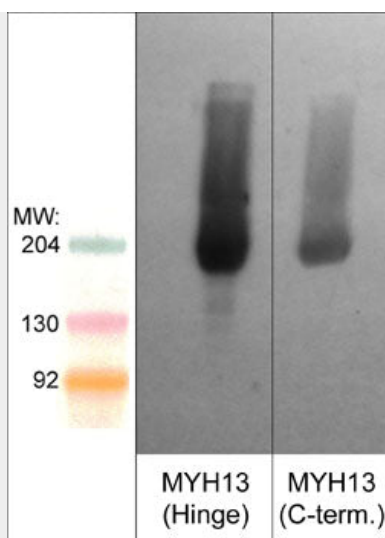
Blue Ice

Anti-Myosin 13/Extraocular Myosin (C-terminal region) Antibody - Protocols

Provided below are standard protocols that you may find useful for product applications.

- [Western Blot](#)
- [Blocking Peptides](#)
- [Dot Blot](#)
- [Immunohistochemistry](#)
- [Immunofluorescence](#)
- [Immunoprecipitation](#)
- [Flow Cytometry](#)
- [Cell Culture](#)

Anti-Myosin 13/Extraocular Myosin (C-terminal region) Antibody - Images



Western blot analysis of MYH13 in mouse extraocular muscle. The blot was probed on the left with anti-MYH13/Extraocular myosin (Hinge region) antibody (MP4571) and on the right with anti-MYH13/Extraocular myosin (C-terminal region) antibody (MP4561).

Anti-Myosin 13/Extraocular Myosin (C-terminal region) Antibody - Background

Myosin is a highly conserved, ubiquitous protein found in all eukaryotic cells, where it provides the motor function for diverse movements such as cytokinesis, phagocytosis, and muscle contraction. All myosins contain an amino-terminal motor/head domain and a carboxy-terminal tail domain. The class II myosins, consist of the conventional two-headed myosins that form filaments and are composed of two myosin heavy chain (MYH) subunits and four myosin light chain subunits. There are 15 MYH genes identified as Class II myosins and these include six skeletal muscle MYHs (MYH1, MYH2, MYH3, MYH4, MYH8, MYH13), three cardiac MYHs (MYH6, MYH7, MYH7B) and two non-muscle MYHs (MYH9, MYH10), as well as a smooth muscle MYH (MYH11).