

**Anti-Paxillin (C-terminal) Antibody**  
**Catalog # AN1886****Specification**

---

**Anti-Paxillin (C-terminal) Antibody - Product Information**

Primary Accession	<a href="#">P49023</a>
Reactivity	<b>Bovine</b>
Host	<b>Rabbit</b>
Clonality	<b>Rabbit Polyclonal</b>
Isotype	<b>IgG</b>
Calculated MW	<b>64505</b>

**Anti-Paxillin (C-terminal) Antibody - Additional Information**

Gene ID **5829**

**Storage**

Maintain refrigerated at 2-8°C for up to 6 months. For long term storage store at -20°C in small aliquots to prevent freeze-thaw cycles.

**Precautions**

Anti-Paxillin (C-terminal) Antibody is for research use only and not for use in diagnostic or therapeutic procedures.

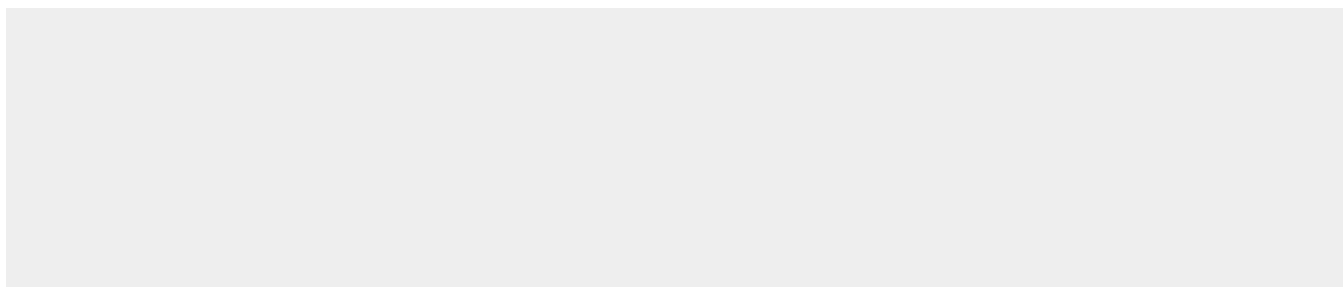
**Shipping**

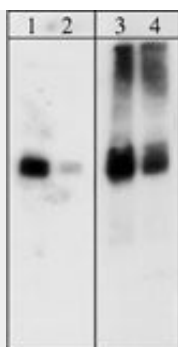
Blue Ice

**Anti-Paxillin (C-terminal) Antibody - Protocols**

Provided below are standard protocols that you may find useful for product applications.

- [Western Blot](#)
- [Blocking Peptides](#)
- [Dot Blot](#)
- [Immunohistochemistry](#)
- [Immunofluorescence](#)
- [Immunoprecipitation](#)
- [Flow Cytometry](#)
- [Cell Culture](#)

**Anti-Paxillin (C-terminal) Antibody - Images**



Western blot analysis of A431 cells. The blot was probed with rabbit polyclonal anti-Paxillin (PP1161) at 1:500 & 1:2000 (lanes 1 & 2) or with mouse monoclonal anti-Paxillin (PM1071) at 1:2000 & 1:5000 (lanes 3 & 4).

#### **Anti-Paxillin (C-terminal) Antibody - Background**

Paxillin, a focal adhesion protein, is involved in focal adhesion formation during cell adhesion and migration. Paxillin contains LD motifs, LIM domains, and SH3-/SH2-binding domains that participate in a variety of protein-protein interactions with kinases, GTPase-activating proteins, and cytoskeletal proteins. Phosphorylation of paxillin occurs at both tyrosine and serine sites. Serine phosphorylation of paxillin occurs in response to growth-factor activation and fibronectins. Both JNK1 and cdc2 kinases can phosphorylate serine 178 in paxillin. The mutant form of paxillin (S178A) decreases the migration of keratocytes and epithelial cells. Thus, phosphorylation paxillin at serine 178 may be important during cell migration