

**Anti-A-Raf (N-terminal region) Antibody**  
**Catalog # AN1930****Specification**

---

**Anti-A-Raf (N-terminal region) Antibody - Product Information**

Primary Accession	<a href="#">P10398</a>
Reactivity	<b>Bovine</b>
Host	<b>Mouse</b>
Clonality	<b>Mouse Monoclonal</b>
Isotype	<b>IgG1</b>
Calculated MW	<b>67585</b>

**Anti-A-Raf (N-terminal region) Antibody - Additional Information**

Gene ID	<b>369</b>
<b>Other Names</b>	
araf	

**Storage**

Maintain refrigerated at 2-8°C for up to 6 months. For long term storage store at -20°C in small aliquots to prevent freeze-thaw cycles.

**Precautions**

Anti-A-Raf (N-terminal region) Antibody is for research use only and not for use in diagnostic or therapeutic procedures.

**Shipping**

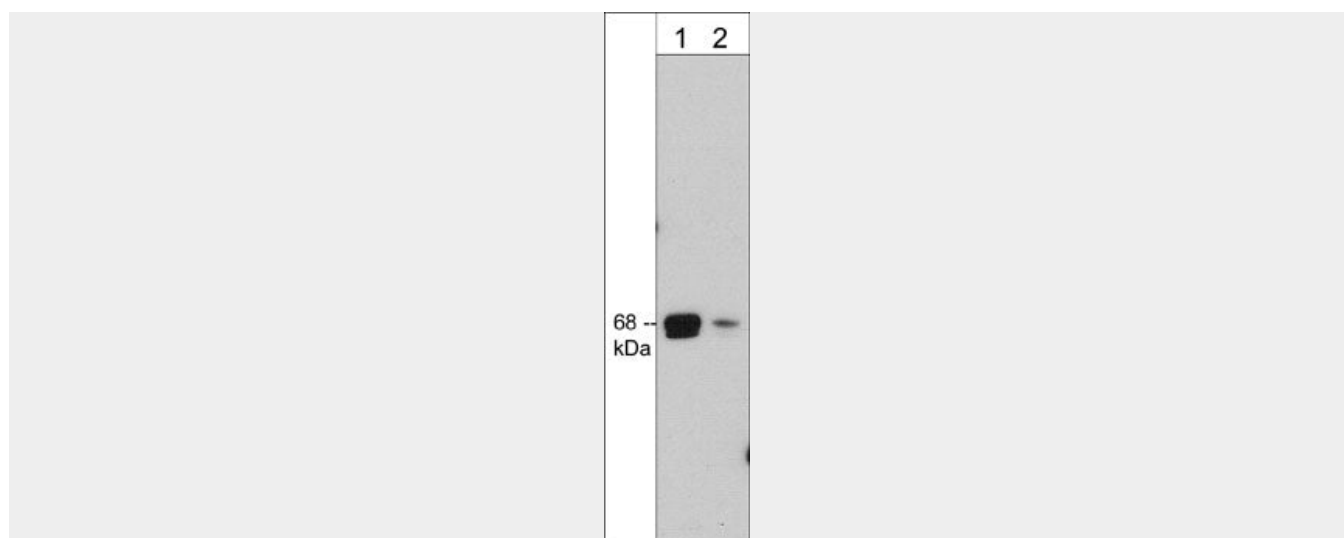
Blue Ice

**Anti-A-Raf (N-terminal region) Antibody - Protocols**

Provided below are standard protocols that you may find useful for product applications.

- [Western Blot](#)
- [Blocking Peptides](#)
- [Dot Blot](#)
- [Immunohistochemistry](#)
- [Immunofluorescence](#)
- [Immunoprecipitation](#)
- [Flow Cytometry](#)
- [Cell Culture](#)

**Anti-A-Raf (N-terminal region) Antibody - Images**



Western blot of human Jurkat cell lysate. The blot was probed with mouse monoclonal anti-A-Raf (N-terminal region) antibody at 1:500 (lane 1) and 1:2000 (lane 2).

#### **Anti-A-Raf (N-terminal region) Antibody - Background**

The Ras-Raf-MAP kinase signaling pathway is involved in control of cell proliferation and differentiation. The Raf kinase family includes A-Raf, B-Raf, and C-Raf. Each family member has three highly conserved regions (CR1-3). The N-terminal CR1 contains the Ras-GTP-binding domain. The CR2 contains a negative regulatory serine residue (C-Raf (S259)/B-Raf(S365)) that may bind 14-3-3 proteins. The CR3 is the catalytic domain that contains phosphorylation sites for Raf-regulating enzymes within two segments, the N-region and the activation segment. Activation of C-Raf involves phosphorylation at many sites including Ser-338, Tyr-341, and Ser-471. The latter site is phosphorylated after EGF stimulation and may be important for MEK interaction in both C-Raf and A-Raf. In B-Raf, multiple phosphorylation sites have been identified, but their specific roles are uncertain. Phosphorylation of Ser-446 may prime B-Raf for activation, and Ser-446 and/or Ser-447 phosphorylation may be critical for B-Raf biological activity during PC12 differentiation. Ser-579 is required for growth factor activation and kinase activity.