

**Anti-N-WASP (Ser-484/Ser-485), Phosphospecific Antibody**  
**Catalog # AN2020****Specification****Anti-N-WASP (Ser-484/Ser-485), Phosphospecific Antibody - Product Information**

Application	WB
Primary Accession	<a href="#">O00401</a>
Reactivity	Bovine
Host	Rabbit
Clonality	Rabbit Polyclonal
Isotype	IgG
Calculated MW	54827

**Anti-N-WASP (Ser-484/Ser-485), Phosphospecific Antibody - Additional Information**

Gene ID 8976

**Other Names**

Neural Wiskott-Aldrich syndrome protein, WASL, WASP

**Dilution**

WB~~1:1000

**Storage**

Maintain refrigerated at 2-8°C for up to 6 months. For long term storage store at -20°C in small aliquots to prevent freeze-thaw cycles.

**Precautions**

Anti-N-WASP (Ser-484/Ser-485), Phosphospecific Antibody is for research use only and not for use in diagnostic or therapeutic procedures.

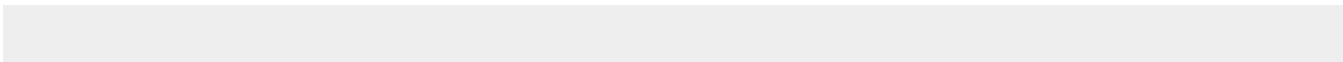
**Shipping**

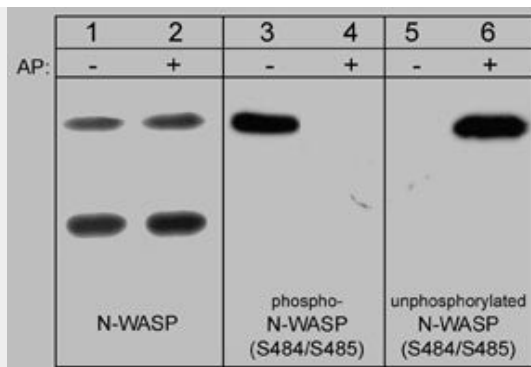
Blue Ice

**Anti-N-WASP (Ser-484/Ser-485), Phosphospecific Antibody - Protocols**

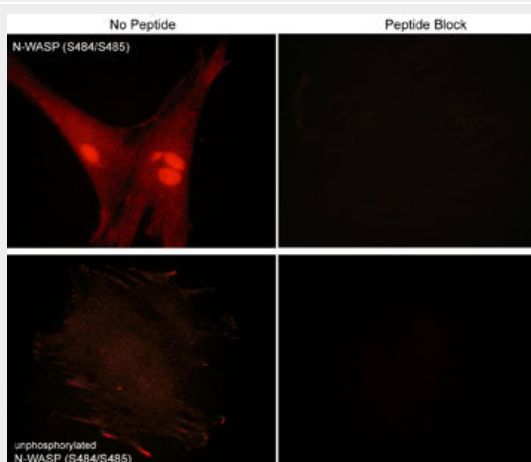
Provided below are standard protocols that you may find useful for product applications.

- [Western Blot](#)
- [Blocking Peptides](#)
- [Dot Blot](#)
- [Immunohistochemistry](#)
- [Immunofluorescence](#)
- [Immunoprecipitation](#)
- [Flow Cytometry](#)
- [Cell Culture](#)

**Anti-N-WASP (Ser-484/Ser-485), Phosphospecific Antibody - Images**



Western blot analysis of control and alkaline phosphatase-treated (AP) neonatal rat brain lysate (20 µg/lane). Blots were probed with anti-N-WASP (Lanes 1 & 2), anti-phospho-N-WASP (S484/S485) (Lanes 3 & 4), or anti-unphosphorylated-N-WASP (S484/S485) (Lanes 5 & 6).



Immunocytochemical labeling of phosphorylated and unphosphorylated N-WASP in rabbit spleen fibroblasts. The cells were probed with N-WASP (Ser-484/Ser-485) phospho-specific and N-WASP (Ser-484/Ser-485) unphosphorylated antibodies, then the antibodies were detected using appropriate secondary antibodies conjugated to Cy3. The antibodies were used in the absence (left) or presence (right) of their respective blocking peptide (WX2205 or WX2405).

### Anti-N-WASP (Ser-484/Ser-485), Phosphospecific Antibody - Background

Members of the Wiskott-Aldrich syndrome protein (WASP) family regulate the formation of actin-based cell structures in many cell types. These proteins contain C-terminal actin-binding domains that can stimulate actin polymerization. In addition, these proteins bind the ARP2/3 complex, which can nucleate actin polymerization at sites that lead to branched actin structures. WASP is expressed primarily in hematopoietic cells, while its homolog N-WASP is widely expressed. These proteins have 48% identity in human with the highest homology in the functional regions of these proteins. Phosphorylation regulates the activity of both proteins. Dual phosphorylation of WASP on serine 483 and 484 by casein kinases increase the affinity for the ARP2/3 complex. Thus, dual serine phosphorylation may be important for formation of actin-based structures in various cell types