

BSA Antibody
Purified Mouse Monoclonal Antibody
Catalog # AO1029a**Specification**

BSA Antibody - Product Information

Application	WB
Reactivity	Bovine
Host	Mouse
Clonality	Monoclonal
Isotype	IgG1

Description

Bovine serum albumin (BSA) is used in variety of laboratories products which contain BSA as a stabilizer. BSA could be detected for the indication of remains of chemical derivates from animal products. This antibody is a good reagent that may be used for the development of detection assay in ELISA or western blot to test the remaning BSA for clinical products in Vivo or research products In Vitro.

Immunogen

Bovine serum albumin.

Formulation

Purified antibody in PBS containing 0.03% sodium azide.

BSA Antibody - Additional Information**Dilution**

WB~~1/500 - 1/2000

Storage

Maintain refrigerated at 2-8°C for up to 6 months. For long term storage store at -20°C in small aliquots to prevent freeze-thaw cycles.

Precautions

BSA Antibody is for research use only and not for use in diagnostic or therapeutic procedures.

BSA Antibody - Protein Information**BSA Antibody - Protocols**

Provided below are standard protocols that you may find useful for product applications.

- [Western Blot](#)
- [Blocking Peptides](#)
- [Dot Blot](#)

- [Immunohistochemistry](#)
- [Immunofluorescence](#)
- [Immunoprecipitation](#)
- [Flow Cytometry](#)
- [Cell Culture](#)

BSA Antibody - Images

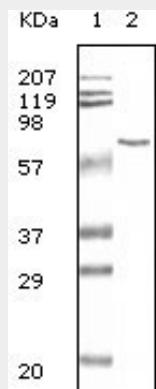


Figure 1: Western blot analysis using BSA mouse mAb antibody against BSA.

BSA Antibody - References

1. Clin Chem 1997,43 (7): 1142-1150.
2. Science 1994,263: 1625-1629.
3. Nature 1994,367: 417-418.