

Mouse TUG Antibody
Purified Mouse Monoclonal Antibody
Catalog # AO1041a**Specification**

Mouse TUG Antibody - Product Information

Application	WB, E
Primary Accession	Q9BZE9
Reactivity	Mouse
Host	Mouse
Clonality	Monoclonal
Isotype	IgG1

Description

The TUG protein contains a UBX domain, for GLUT4. In truncated form, TUG acts in a dominant-negative manner to inhibit insulin-stimulated GLUT4 redistribution in Chinese hamster ovary cells and 3T3-L1 adipocytes. Full-length TUG forms a complex specifically with GLUT4. In 3T3-L1 adipocytes, this complex is present in unstimulated cells and is largely disassembled by insulin. Endogenous TUG is localized with the insulin-mobilizable pool of GLUT4 in unstimulated 3T3-L1 adipocytes, and is not mobilized to the plasma membrane by insulin.

Immunogen

Purified recombinant fragment of TUG expressed in E. Coli.

Formulation

Purified antibody in PBS containing 0.03% sodium azide.

Mouse TUG Antibody - Additional Information

Gene ID 79058

Other Names

Tether containing UBX domain for GLUT4, Alveolar soft part sarcoma chromosomal region candidate gene 1 protein, Alveolar soft part sarcoma locus, Renal papillary cell carcinoma protein 17, UBX domain-containing protein 9, ASPSCR1, ASPL, RCC17, TUG, UBXD9, UBXN9

Dilution

WB~~1/500 - 1/2000

E~~N/A

Storage

Maintain refrigerated at 2-8°C for up to 6 months. For long term storage store at -20°C in small aliquots to prevent freeze-thaw cycles.

Precautions

Mouse TUG Antibody is for research use only and not for use in diagnostic or therapeutic procedures.

Mouse TUG Antibody - Protein Information

Name ASPSCR1

Synonyms ASPL, RCC17, TUG, UBXD9, UBXN9

Function

Tethering protein that sequesters GLUT4-containing vesicles in the cytoplasm in the absence of insulin. Modulates the amount of GLUT4 that is available at the cell surface (By similarity). Enhances VCP methylation catalyzed by VCPKMT.

Cellular Location

Endomembrane system; Peripheral membrane protein. Endoplasmic reticulum-Golgi intermediate compartment membrane; Peripheral membrane protein. Cytoplasm Nucleus

Tissue Location

Ubiquitous. Highly expressed in testis, heart, skeletal muscle and pancreas.

Mouse TUG Antibody - Protocols

Provided below are standard protocols that you may find useful for product applications.

- [Western Blot](#)
- [Blocking Peptides](#)
- [Dot Blot](#)
- [Immunohistochemistry](#)
- [Immunofluorescence](#)
- [Immunoprecipitation](#)
- [Flow Cytometry](#)
- [Cell Culture](#)

Mouse TUG Antibody - Images

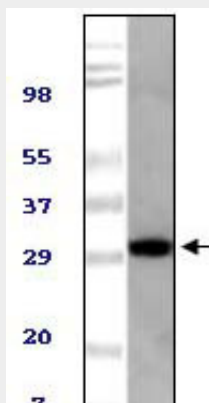


Figure 1: Western blot analysis using TUG mouse mAb against NIH/3T3 cell lysate.

Mouse TUG Antibody - References

1. Nature 2003,425:727 - 733.