

CK1 Antibody
Purified Mouse Monoclonal Antibody
Catalog # AO1069a**Specification**

CK1 Antibody - Product Information

Application	WB, IHC, E
Primary Accession	P04264
Reactivity	Human
Host	Mouse
Clonality	Monoclonal
Isotype	IgG1

Description

CK1 (also designated Cytokeratin 1 or KRT1),with 644-amino acid protein (about 70kDa), is a member of the keratin family. Cytokeratins play a critical role in differentiation and tissue specialization, and they function to maintain the overall structural integrity of epithelial cells. CK1 consist of basic or neutral proteins which are arranged in pairs of heterotypic keratin chains coexpressed during differentiation of simple and stratified epithelial tissues. CK1 is specifically expressed in the spinous and granular layers of the epidermis with family member KRT10 and mutations in these genes have been associated with bullous congenital ichthyosiform erythroderma.

Immunogen

Purified recombinant fragment of CK1 expressed in E. Coli.

Formulation

Ascitic fluid containing 0.03% sodium azide.

CK1 Antibody - Additional Information

Gene ID 3848

Other Names

Keratin, type II cytoskeletal 1, 67 kDa cytokeratin, Cytokeratin-1, CK-1, Hair alpha protein, Keratin-1, K1, Type-II keratin Kb1, KRT1, KRTA

Dilution

WB~~1/500 - 1/2000

IHC~~1/200 - 1/1000

E~~N/A

Storage

Maintain refrigerated at 2-8°C for up to 6 months. For long term storage store at -20°C in small aliquots to prevent freeze-thaw cycles.

Precautions

CK1 Antibody is for research use only and not for use in diagnostic or therapeutic procedures.

CK1 Antibody - Protein Information

Name KRT1

Synonyms KRTA

Function

May regulate the activity of kinases such as PKC and SRC via binding to integrin beta-1 (ITB1) and the receptor of activated protein C kinase 1 (RACK1). In complex with C1QBP is a high affinity receptor for kininogen-1/HMWK.

Cellular Location

Cell membrane. Cytoplasm

Tissue Location

The source of this protein is neonatal foreskin. The 67-kDa type II keratins are expressed in terminally differentiating epidermis

CK1 Antibody - Protocols

Provided below are standard protocols that you may find useful for product applications.

- [Western Blot](#)
- [Blocking Peptides](#)
- [Dot Blot](#)
- [Immunohistochemistry](#)
- [Immunofluorescence](#)
- [Immunoprecipitation](#)
- [Flow Cytometry](#)
- [Cell Culture](#)

CK1 Antibody - Images

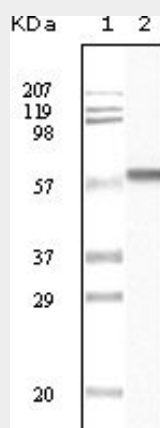


Figure 1: Western blot analysis using CK1 mouse mAb against truncated CK1 recombinant protein.

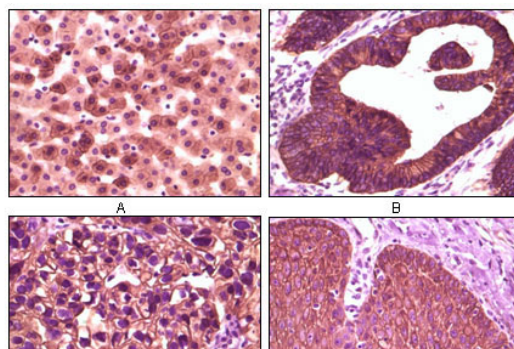


Figure 2: Immunohistochemical analysis of paraffin-embedded human liver tissue (A), colon carcinoma (B), lung carcinoma (C) and esophagus tissue (D), showing membrane localization using CK1 mouse mAb with DAB staining.

CK1 Antibody - References

1. Ricardo G. Espinola, Robin A. Pixley, Berhane Ghebrehiwet. Blood (ASH Annual Meeting Abstracts), Nov 2005; 106: 2666.