

**PSA (KLK3) Antibody**  
**Purified Mouse Monoclonal Antibody**  
**Catalog # AO1144a**

**Specification**

---

**PSA (KLK3) Antibody - Product Information**

Application	<b>WB, IHC, FC, E</b>
Primary Accession	<a href="#">P07288</a>
Reactivity	<b>Human</b>
Host	<b>Mouse</b>
Clonality	<b>Monoclonal</b>
Isotype	<b>IgG1</b>

**Description**

Kallikrein-related peptidase 3. Kallikreins are a subgroup of serine proteases having diverse physiological functions. Growing evidence suggests that many kallikreins are implicated in carcinogenesis and some have potential as novel cancer and other disease biomarkers. This gene is one of the fifteen kallikrein subfamily members located in a cluster on chromosome 19. Its protein product is a protease present in seminal plasma. It is thought to function normally in the liquefaction of seminal coagulum, presumably by hydrolysis of the high molecular mass seminal vesicle protein. Serum level of this protein, called PSA in the clinical setting, is useful in the diagnosis and monitoring of prostatic carcinoma. Alternate splicing of this gene generates several transcript variants encoding different isoforms.

**Immunogen**

Purified recombinant fragment of KLK3 (aa26-251) expressed in E. Coli. <br />

**Formulation**

Ascitic fluid containing 0.03% sodium azide.

**PSA (KLK3) Antibody - Additional Information**

**Gene ID** 354

**Other Names**

Prostate-specific antigen, PSA, 3.4.21.77, Gamma-seminoprotein, Semin, Kallikrein-3, P-30 antigen, Semenogelase, KLK3, APS

**Dilution**

WB~~1/500 - 1/2000  
IHC~~1/500 - 1/2000  
FC~~1/200 - 1/400  
E~~N/A

**Storage**

Maintain refrigerated at 2-8°C for up to 6 months. For long term storage store at -20°C in small aliquots to prevent freeze-thaw cycles.

**Precautions**

PSA (KLK3) Antibody is for research use only and not for use in diagnostic or therapeutic

procedures.

## PSA (KLK3) Antibody - Protein Information

**Name** KLK3

**Synonyms** APS

### Function

Hydrolyzes semenogelin-1 thus leading to the liquefaction of the seminal coagulum.

### Cellular Location

Secreted.

## PSA (KLK3) Antibody - Protocols

Provided below are standard protocols that you may find useful for product applications.

- [Western Blot](#)
- [Blocking Peptides](#)
- [Dot Blot](#)
- [Immunohistochemistry](#)
- [Immunofluorescence](#)
- [Immunoprecipitation](#)
- [Flow Cytometry](#)
- [Cell Culture](#)

## PSA (KLK3) Antibody - Images

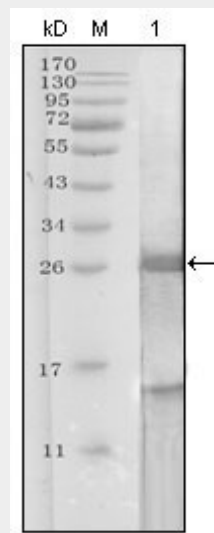


Figure 1: Western blot analysis using KLK3 mouse mAb against truncated KLK3 recombinant protein.

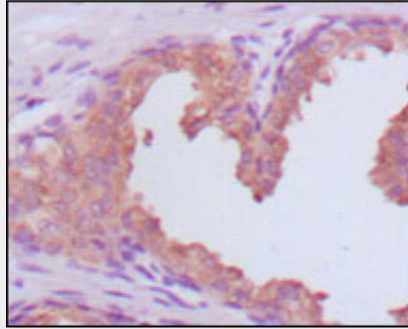


Figure 2: Immunohistochemical analysis of paraffin-embedded human prostate carcinoma tissues, showing cytoplasmic localization using KLK3 mouse mAb with DAB staining.

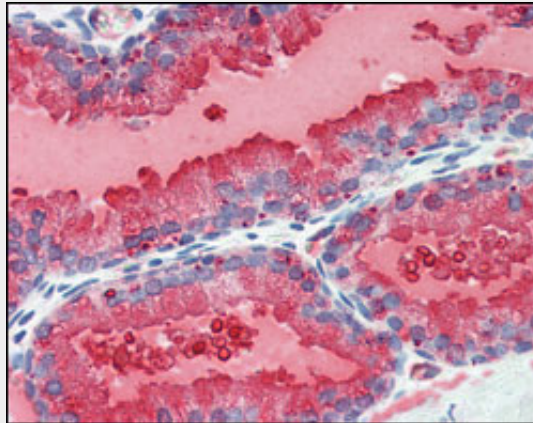


Figure 3: Immunohistochemical analysis of paraffin-embedded human prostate tissues using KLK3 mouse mAb with DAB staining.

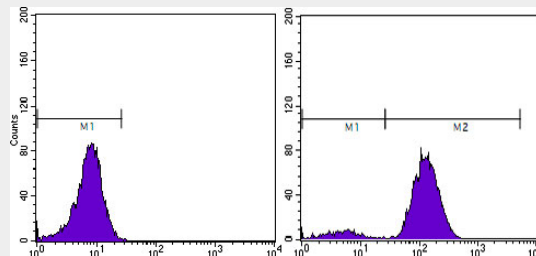


Figure 4: Flow cytometric analysis of PC-3 cells using KLK3 mouse mAb (right) and negative control (left).

#### PSA (KLK3) Antibody - References

1. Am J Surg Pathol. 2007 Sep;31(9):1351-5.
2. Chem Biol Drug Des. 2007 Sep;70(3):261-7.