

IGFBP2 Antibody
Purified Mouse Monoclonal Antibody
Catalog # AO1169a**Specification**

IGFBP2 Antibody - Product Information

Application	WB, IHC, ICC, IF
Primary Accession	P18065
Reactivity	Human
Host	Mouse
Clonality	Monoclonal
Isotype	IgG1

Description

IGFBP2: insulin-like growth factor binding protein 2. IGFBP2 is a member of the ISGBP family which bind various IGFs. IGFBP2 is overexpressed in a wide spectrum of other cancers, including glioma, prostate cancer, synovial sarcoma, neuroblastoma, colon cancer, adrenocortical cancer, lung cancer, Wilms' tumor, and hepatoblastoma. The overexpression of IGFBP2 also correlates with the aggressiveness of some tumors. IGFBP2 activates the expression of matrix metalloprotease 2, which contributes to cell invasiveness.

Immunogen

Purified recombinant fragment of protein IGFBP2 (aa180-328) expressed in E. Coli.

Formulation

Ascitic fluid containing 0.03% sodium azide.

IGFBP2 Antibody - Additional Information

Gene ID 3485

Other Names

Insulin-like growth factor-binding protein 2, IBP-2, IGF-binding protein 2, IGFBP-2, IGFBP2, BP2, IBP2

Dilution

WB~~1/500 - 1/2000
IHC~~1/200 - 1/1000
ICC~~1:200~~1000
IF~~1:200~1000.

Storage

Maintain refrigerated at 2-8°C for up to 6 months. For long term storage store at -20°C in small aliquots to prevent freeze-thaw cycles.

Precautions

IGFBP2 Antibody is for research use only and not for use in diagnostic or therapeutic procedures.

IGFBP2 Antibody - Protein Information

Name IGFBP2

Synonyms BP2, IBP2

Function

Inhibits IGF-mediated growth and developmental rates. IGF- binding proteins prolong the half-life of the IGFs and have been shown to either inhibit or stimulate the growth promoting effects of the IGFs on cell culture. They alter the interaction of IGFs with their cell surface receptors.

Cellular Location

Secreted.

IGFBP2 Antibody - Protocols

Provided below are standard protocols that you may find useful for product applications.

- [Western Blot](#)
- [Blocking Peptides](#)
- [Dot Blot](#)
- [Immunohistochemistry](#)
- [Immunofluorescence](#)
- [Immunoprecipitation](#)
- [Flow Cytometry](#)
- [Cell Culture](#)

IGFBP2 Antibody - Images

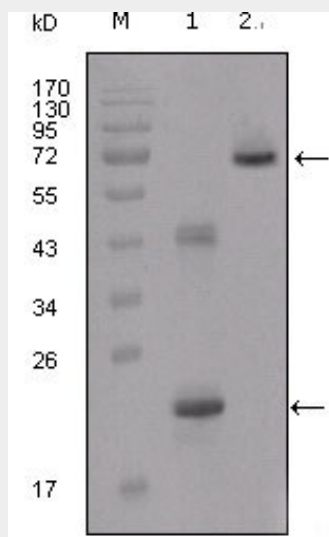


Figure 1: Western blot analysis using IGFBP2 mouse mAb against truncated IGFBP2-His recombinant protein (1) and truncated IGFBP2 (aa40-328)-hlgGfc transfected CHO-K1 cell lysate (2).

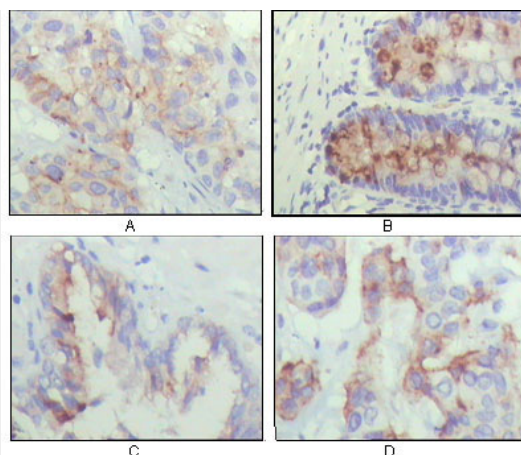


Figure 2: Immunohistochemical analysis of paraffin-embedded human lung cancer (A), rectum(B), prostate (C), colon cancer (D) showing cytoplasmic localization using IGFBP2 mouse mAb with DAB staining.

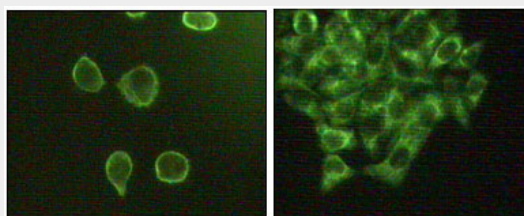


Figure 2: Immunofluorescence staining of methanol-fixed A431 (left) and Hela (right) cells showing cytoplasmic and membrane localization.

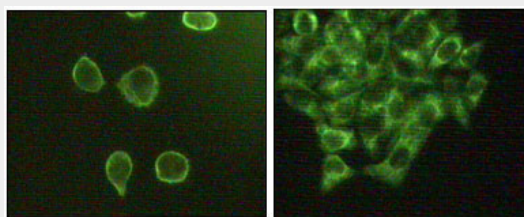


Figure 2: Immunofluorescence staining of methanol-fixed A431(left) and Hela(right) cells showing cytoplasmic and membrane localization.

IGFBP2 Antibody - References

1. Oncol Rep. 2005 Feb;13(2):341-5. 2. Prostate. 2005 Jun 15;64(1):9-19. 3. Bone. 2005 Dec;37(6):741-50.