

Cytokeratin 18 Antibody
Purified Mouse Monoclonal Antibody
Catalog # AO1227a**Specification**

Cytokeratin 18 Antibody - Product Information

Application	WB, IHC, E
Primary Accession	P05783
Reactivity	Human
Host	Mouse
Clonality	Monoclonal
Isotype	IgG2b
Calculated MW	48kDa KDa

Description

Cytokeratin 18, also known as CK18, CYK18, KRT18. Entrez Protein NP_000215. It encodes the type I intermediate filament chain keratin 18. Keratin 18, together with its filament partner keratin 8, are perhaps the most commonly found members of the intermediate filament gene family. They are expressed in single layer epithelial tissues of the body. Mutations in this gene have been linked to cryptogenic cirrhosis. Two transcript variants encoding the same protein have been found for this gene.

Immunogen

Purified recombinant fragment of human Cytokeratin 18 (aa391-483) expressed in E. Coli.

Formulation

Ascitic fluid containing 0.03% sodium azide.

Cytokeratin 18 Antibody - Additional Information

Gene ID 3875

Other Names

Keratin, type I cytoskeletal 18, Cell proliferation-inducing gene 46 protein, Cytokeratin-18, CK-18, Keratin-18, K18, KRT18, CYK18

Dilution

WB~~1/500 - 1/2000

IHC~~1/200 - 1/1000

E~~N/A

Storage

Maintain refrigerated at 2-8°C for up to 6 months. For long term storage store at -20°C in small aliquots to prevent freeze-thaw cycles.

Precautions

Cytokeratin 18 Antibody is for research use only and not for use in diagnostic or therapeutic procedures.

Cytokeratin 18 Antibody - Protein Information

Name KRT18

Synonyms CYK18

Function

Involved in the uptake of thrombin-antithrombin complexes by hepatic cells (By similarity). When phosphorylated, plays a role in filament reorganization. Involved in the delivery of mutated CFTR to the plasma membrane. Together with KRT8, is involved in interleukin-6 (IL-6)-mediated barrier protection.

Cellular Location

Nucleus matrix {ECO:0000250|UniProtKB:Q5BJY9}. Cytoplasm, perinuclear region. Nucleus, nucleolus. Cytoplasm {ECO:0000250|UniProtKB:Q5BJY9}

Tissue Location

Expressed in colon, placenta, liver and very weakly in exocervix. Increased expression observed in lymph nodes of breast carcinoma.

Cytokeratin 18 Antibody - Protocols

Provided below are standard protocols that you may find useful for product applications.

- [Western Blot](#)
- [Blocking Peptides](#)
- [Dot Blot](#)
- [Immunohistochemistry](#)
- [Immunofluorescence](#)
- [Immunoprecipitation](#)
- [Flow Cytometry](#)
- [Cell Culture](#)

Cytokeratin 18 Antibody - Images

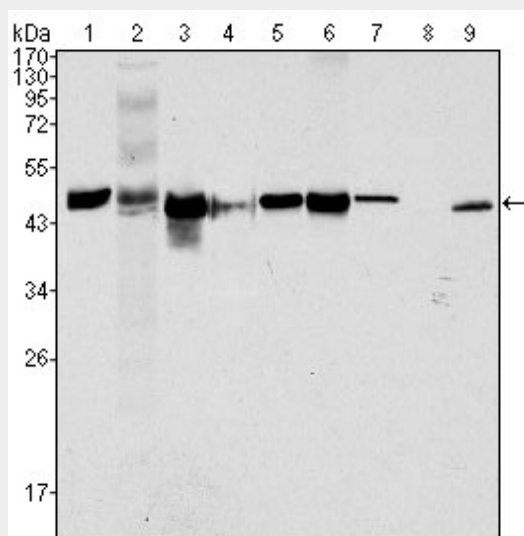


Figure 1: Western blot analysis using CK18 mouse mAb against Hela (1), NIH/3T3 (2), A549 (3),

Jurkat (4), MCF-7(5), HepG2 (6), A431 (7), HEK293 (8) and K562 (9) cell lysate.

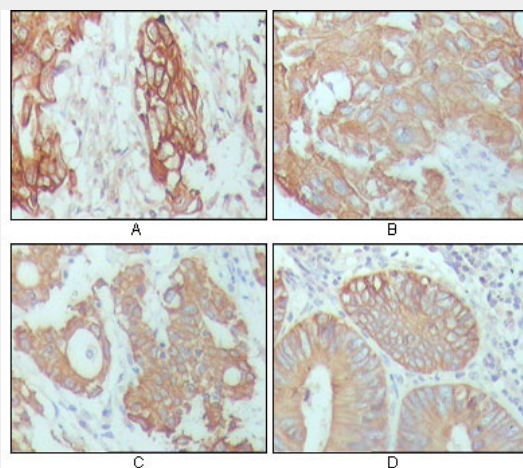


Figure 2: Immunohistochemical analysis of paraffin-embedded human breast carcinoma (A), hepatocarcinoma (B), stomach cancer (C) and colon cancer tissue (D), showing cytoplasmic location with DAB staining using CK18 mouse mAb.

Cytokeratin 18 Antibody - References

1. Cancer Genet Cytogenet. 2007 Oct 15;178(2):94-103.
2. J Mol Histol. 2008 Apr;39(2):209-16.