

Cytokeratin 8 Antibody
Purified Mouse Monoclonal Antibody
Catalog # AO1229a**Specification**

Cytokeratin 8 Antibody - Product Information

Application	WB, IHC, ICC, E
Primary Accession	P05787
Reactivity	Human
Host	Mouse
Clonality	Monoclonal
Isotype	IgG1
Calculated MW	54kDa KDa

Description

Cytokeratin 8, also known as CK8, KRT8, K8. Entrez Protein NP_002264. It is a member of the type II keratin family. Type I and type II keratins heteropolymerize to form intermediate-sized filaments in the cytoplasm of epithelial cells. It typically dimerizes with keratin 18 to form an intermediate filament in simple single-layered epithelial cells. This protein plays a role in maintaining cellular structural integrity and also functions in signal transduction and cellular differentiation. Mutations in this gene cause cryptogenic cirrhosis.

Immunogen

Purified recombinant fragment of human Cytokeratin (aa391-483) expressed in E. Coli.

Formulation

Ascitic fluid containing 0.03% sodium azide.

Cytokeratin 8 Antibody - Additional Information

Gene ID 3856

Other Names

Keratin, type II cytoskeletal 8, Cytokeratin-8, CK-8, Keratin-8, K8, Type-II keratin Kb8, KRT8, CYK8

Dilution

WB~~1/500 - 1/2000
IHC~~1/500 - 1/2000
ICC~~N/A
E~~N/A

Storage

Maintain refrigerated at 2-8°C for up to 6 months. For long term storage store at -20°C in small aliquots to prevent freeze-thaw cycles.

Precautions

Cytokeratin 8 Antibody is for research use only and not for use in diagnostic or therapeutic procedures.

Cytokeratin 8 Antibody - Protein Information

Name KRT8

Synonyms CYK8

Function

Together with KRT19, helps to link the contractile apparatus to dystrophin at the costameres of striated muscle.

Cellular Location

Cytoplasm. Nucleus, nucleoplasm {ECO:0000250|UniProtKB:Q10758}. Nucleus matrix {ECO:0000250|UniProtKB:Q10758}

Tissue Location

Observed in muscle fibers accumulating in the costameres of myoplasm at the sarcolemma membrane in structures that contain dystrophin and spectrin. Expressed in gingival mucosa and hard palate of the oral cavity.

Cytokeratin 8 Antibody - Protocols

Provided below are standard protocols that you may find useful for product applications.

- [Western Blot](#)
- [Blocking Peptides](#)
- [Dot Blot](#)
- [Immunohistochemistry](#)
- [Immunofluorescence](#)
- [Immunoprecipitation](#)
- [Flow Cytometry](#)
- [Cell Culture](#)

Cytokeratin 8 Antibody - Images

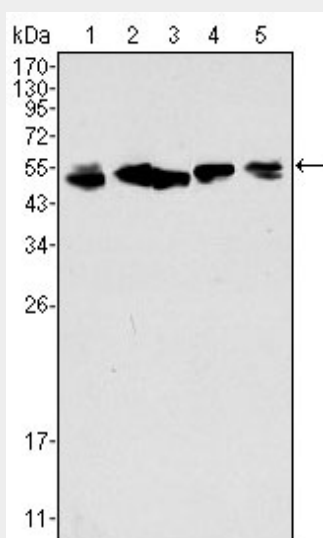


Figure 1: Western blot analysis using CK8 mouse mAb against A549 (1), HeLa (2), MCF-7 (3), A431 (4) and HepG2 (5) cell lysate.

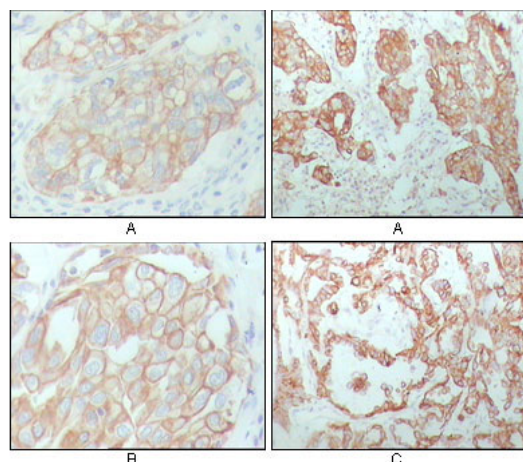


Figure 2: Immunohistochemical analysis of paraffin-embedded human breast carcinoma (A), lung cancer (B) and ovarian cancer tissue (C), showing membrane and cytoplasmic localization with DAB staining using CK8 mouse mAb.

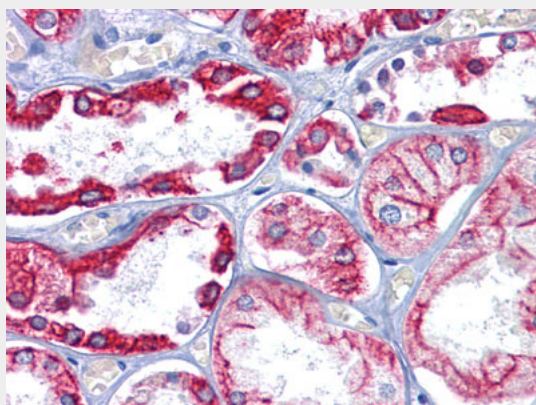


Figure 3: Immunohistochemical analysis of paraffin-embedded human Kidney tissues using CK8 mouse mAb

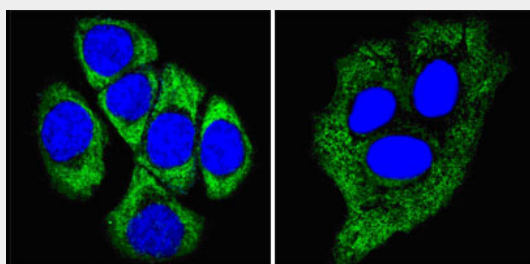


Figure 4: Confocal immunofluorescence analysis of methanol-fixed ECA109 cells (left) and HepG2 cells (right) using CK8 mouse mAb (green), showing cytoplasmic localization. Blue: DRAQ5 fluorescent DNA dye.

Cytokeratin 8 Antibody - References

1. Cancer Genet Cytogenet. 2007 Oct 15;178(2):94-103.
2. Cancer Lett. 2008 Jul 8;265(2):188-96.