

**Cytokeratin 19 Antibody**  
**Purified Mouse Monoclonal Antibody**  
**Catalog # AO1232a****Specification**

---

**Cytokeratin 19 Antibody - Product Information**

Application	WB, IHC, E
Primary Accession	<a href="#">P08727</a>
Reactivity	Human
Host	Mouse
Clonality	Monoclonal
Isotype	IgG1
Calculated MW	44kDa KDa

**Description**

Cytokeratin 19, also known as KRT19, CK19, CK19, K1CS, MGC15366. Entrez Protein NP\_002267. It is a member of the keratin family. The keratins are intermediate filament proteins responsible for the structural integrity of epithelial cells and are subdivided into cytokeratins and hair keratins. The type I cytokeratins consist of acidic proteins which are arranged in pairs of heterotypic keratin chains. Unlike its related family members, this smallest known acidic cytokeratin is not paired with a basic cytokeratin in epithelial cells. It is specifically expressed in the periderm, the transiently superficial layer that envelopes the developing epidermis.

**Immunogen**

Purified recombinant fragment of Cytokeratin 19 (aa80-400) expressed in E. Coli. <br />

**Formulation**

Ascitic fluid containing 0.03% sodium azide.

**Cytokeratin 19 Antibody - Additional Information**

**Gene ID** 3880

**Other Names**

Keratin, type I cytoskeletal 19, Cytokeratin-19, CK-19, Keratin-19, K19, KRT19

**Dilution**

WB~~1/500 - 1/2000

IHC~~1/200 - 1/1000

E~~N/A

**Storage**

Maintain refrigerated at 2-8°C for up to 6 months. For long term storage store at -20°C in small aliquots to prevent freeze-thaw cycles.

**Precautions**

Cytokeratin 19 Antibody is for research use only and not for use in diagnostic or therapeutic procedures.

## Cytokeratin 19 Antibody - Protein Information

**Name** KRT19

### Function

Involved in the organization of myofibers. Together with KRT8, helps to link the contractile apparatus to dystrophin at the costameres of striated muscle.

### Tissue Location

Expressed in a defined zone of basal keratinocytes in the deep outer root sheath of hair follicles. Also observed in sweat gland and mammary gland ductal and secretory cells, bile ducts, gastrointestinal tract, bladder urothelium, oral epithelia, esophagus, ectocervical epithelium (at protein level). Expressed in epidermal basal cells, in nipple epidermis and a defined region of the hair follicle. Also seen in a subset of vascular wall cells in both the veins and artery of human umbilical cord, and in umbilical cord vascular smooth muscle. Observed in muscle fibers accumulating in the costameres of myoplasm at the sarcolemma in structures that contain dystrophin and spectrin.

## Cytokeratin 19 Antibody - Protocols

Provided below are standard protocols that you may find useful for product applications.

- [Western Blot](#)
- [Blocking Peptides](#)
- [Dot Blot](#)
- [Immunohistochemistry](#)
- [Immunofluorescence](#)
- [Immunoprecipitation](#)
- [Flow Cytometry](#)
- [Cell Culture](#)

## Cytokeratin 19 Antibody - Images

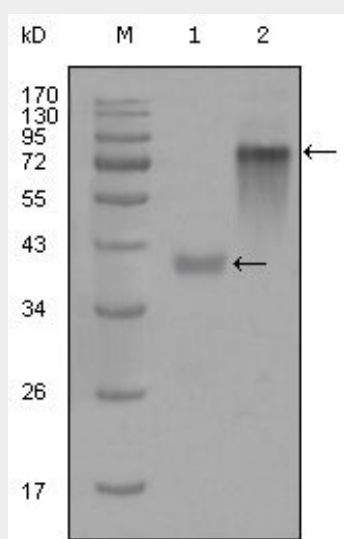


Figure 1: Western blot analysis using anti-KRT19 monoclonal antibody against truncated KRT19-His recombinant protein (1) and full-length KRT19(aa1-400)-hlgGfc transfected CHO-K1 cell lysate(2).

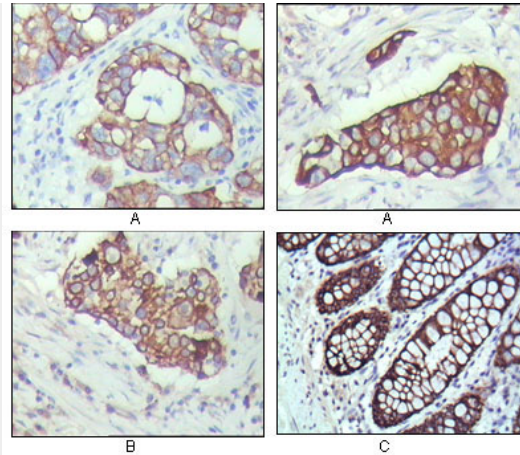


Figure 2: Immunohistochemical analysis of paraffin-embedded human breast carcinoma(A), lung cancer(B) and normal colon tissue(C), showing cytoplasmic localization with DAB staining using KRT19 mouse mAb.

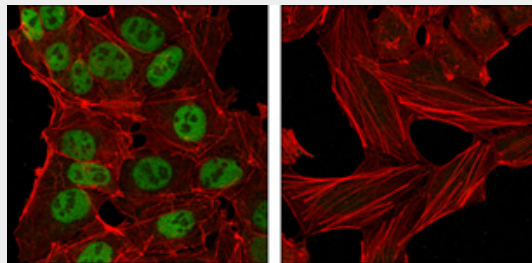


Figure 2: Confocal immunofluorescence analysis of NTERA-2 cells (left) and HeLa cells (right) using Nanog mouse mAb (green). Red: Actin filaments have been labeled with DY-554 phalloidin.

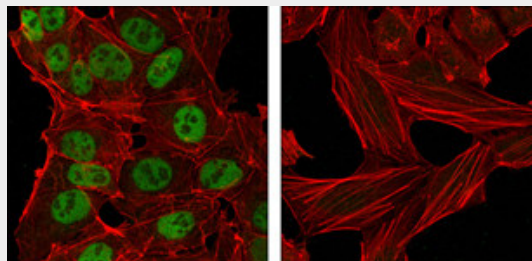


Figure 2: Confocal immunofluorescence analysis of NTERA-2 cells (left) and HeLa cells (right) using anti-Nanog Mouse mAb (green). Red: Actin filaments have been labeled with DY-554 phalloidin.

### Cytokeratin 19 Antibody - References

1. Lung Cancer. 2007 Dec;58(3):369-75.
2. Endocr Pract. 2008 Mar;14(2):168-74.