

Mammaglobin-1 Antibody
Purified Mouse Monoclonal Antibody
Catalog # AO1248a**Specification**

Mammaglobin-1 Antibody - Product Information

Application	WB, E
Primary Accession	Q13296
Reactivity	Human
Host	Mouse
Clonality	Monoclonal
Isotype	IgG1

Description

Mammaglobin is a gene that is expressed almost exclusively in the normal breast epithelium and human breast cancer. It is a member of the secretoglobulin gene family and forms a heterodimer with lipophilin B. It has been suggested that mammaglobin may be a useful marker for breast cancer clinical research. Studies investigating the detection of mRNA by RT PCR from circulating carcinoma cells in the peripheral blood of breast cancer patients have shown that mammaglobin is a highly specific marker and correlates with several prognostic factors, such as lymph node involvement.

Immunogen

Purified recombinant fragment of Mammaglobin-1 expressed in E. Coli.

Formulation

Ascitic fluid containing 0.03% sodium azide.

Mammaglobin-1 Antibody - Additional Information

Gene ID 4250

Other Names

Mammaglobin-A, Mammaglobin-1, Secretoglobulin family 2A member 2, SCGB2A2, MGB1, UGB2

Dilution

WB~~1/500 - 1/2000

E~~N/A

Storage

Maintain refrigerated at 2-8°C for up to 6 months. For long term storage store at -20°C in small aliquots to prevent freeze-thaw cycles.

Precautions

Mammaglobin-1 Antibody is for research use only and not for use in diagnostic or therapeutic procedures.

Mammaglobin-1 Antibody - Protein Information

Name SCGB2A2

Synonyms MGB1, UGB2

Cellular Location
Secreted.

Tissue Location
Mammary gland specific. Over-expressed in breast cancer

Mammaglobin-1 Antibody - Protocols

Provided below are standard protocols that you may find useful for product applications.

- [Western Blot](#)
- [Blocking Peptides](#)
- [Dot Blot](#)
- [Immunohistochemistry](#)
- [Immunofluorescence](#)
- [Immunoprecipitation](#)
- [Flow Cytometry](#)
- [Cell Culture](#)

Mammaglobin-1 Antibody - Images

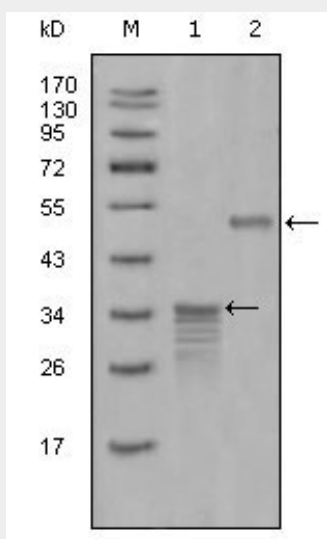


Figure 1: Western blot analysis using Mammaglobin-1 mouse mAb against full-length GST- Mammaglobin-1 (1) and full-length MBP- Mammaglobin-1 (aa1-193) recombinant protein (2).

Mammaglobin-1 Antibody - References

1. Am J Clin Pathol. 2004 May;121(5):637-43.
2. Eur J Surg Oncol. 2007 Feb;33(1):16-22.