

LCN1 Antibody
Purified Mouse Monoclonal Antibody
Catalog # AO1270a**Specification**

LCN1 Antibody - Product Information

Application	WB, IHC, ICC, E
Primary Accession	P31025
Reactivity	Human
Host	Mouse
Clonality	Monoclonal
Isotype	IgG1
Calculated MW	19.2kDa KDa

Description

LCN1: lipocalin 1 (tear prealbumin), also known as TP, PMFA, VEGP. Entrez Protein: NP_002288. The protein belongs to the lipocalin family. Lipocalins are a group of extracellular proteins that are able to bind lipophiles by enclosure within their structures to minimize solvent contact. This protein may bind hydrophobic ligands and inhibit cysteine proteinases. It may also play a role in taste reception and could be necessary for the concentration and delivery of sapid molecules in the gustatory system.

Immunogen

Purified recombinant fragment of LCN1 expressed in E. Coli.

Formulation

Ascitic fluid containing 0.03% sodium azide.

LCN1 Antibody - Additional Information

Gene ID 3933

Other Names

Lipocalin-1, Tear lipocalin, Tlc, Tear prealbumin, TP, Von Ebner gland protein, VEG protein, LCN1, VEGP

Dilution

WB~~1/500 - 1/2000

IHC~~1/200 - 1/1000

ICC~~N/A

E~~N/A

Storage

Maintain refrigerated at 2-8°C for up to 6 months. For long term storage store at -20°C in small aliquots to prevent freeze-thaw cycles.

Precautions

LCN1 Antibody is for research use only and not for use in diagnostic or therapeutic procedures.

LCN1 Antibody - Protein Information

Name LCN1

Synonyms VEGP

Function

Could play a role in taste reception. Could be necessary for the concentration and delivery of sapid molecules in the gustatory system. Can bind various ligands, with chemical structures ranging from lipids and retinoids to the macrocyclic antibiotic rifampicin and even to microbial siderophores. Exhibits an extremely wide ligand pocket.

Cellular Location

Secreted.

Tissue Location

Mainly expressed in lachrymal and salivary glands. Also expressed in the prostate

LCN1 Antibody - Protocols

Provided below are standard protocols that you may find useful for product applications.

- [Western Blot](#)
- [Blocking Peptides](#)
- [Dot Blot](#)
- [Immunohistochemistry](#)
- [Immunofluorescence](#)
- [Immunoprecipitation](#)
- [Flow Cytometry](#)
- [Cell Culture](#)

LCN1 Antibody - Images

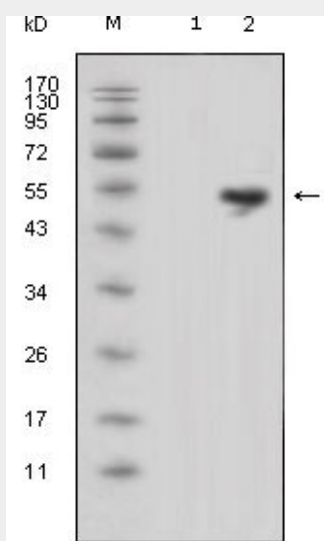


Figure 1: Western blot analysis using LCN1 mouse mAb against HEK293 (1) and LCN1-hlgGfC transfected HEK293 cell lysate (2).

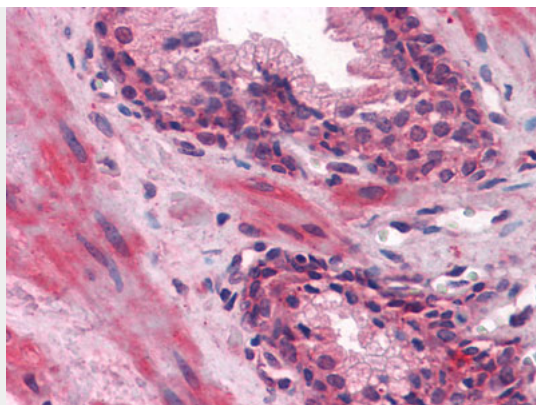


Figure 2: Immunohistochemical analysis of paraffin-embedded human Prostate tissues using LCN1 mouse mAb

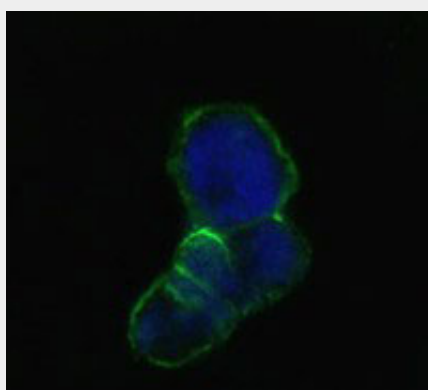


Figure 3: Confocal immunofluorescence analysis of methanol-fixed HEK293 cells transfected with LCN1-hlgGfc using LCN1 mouse mAb(green), showing membrane localization. Blue: DRAQ5 fluorescent DNA dye.

LCN1 Antibody - References

1. Adv Exp Med Biol. 2002;506(Pt A):555-65.
2. J Autoimmun. 2005 Nov;25(3):229-34.