

**TYRO3 Antibody**  
**Purified Mouse Monoclonal Antibody**  
**Catalog # AO1274a****Specification**

---

**TYRO3 Antibody - Product Information**

Application	WB, E
Primary Accession	<a href="#">Q06418</a>
Reactivity	Human
Host	Mouse
Clonality	Monoclonal
Isotype	IgG1
Calculated MW	96.9kDa KDa

**Description**

TYRO3: Tyrosine-protein kinase, also known as BYK, Brt, Dtk, Sky. Entrez Protein: NP\_006284. It belongs to the Tyr protein kinase family (AXL/UFO subfamily). The UFO family of receptor tyrosine kinases is comprised of subfamily members Rse(also referred to as Tyro3 or Sky) and UFO (also called Tyro7 or Axl). Two distinct isoforms of Rse, designated Brt and Etk-2, have been described. Brt differs from Rse at its C-terminus, but more importantly lacks the N-terminal 31 amino acid signal peptide sequence present in Rse, which is replaced by a 27 amino acid Brt-specific sequence. It has been suggested that as a result of this alternative splicing event, Brt resides in the cytoplasm, unlike Rse which is expressed on the cell surface. Etk-2 also lacks an N-terminal signal peptide which is substituted with a 45 amino acid Etk-2-specific sequence. Protein kinases mediate most of the signal transduction in eukaryotic cells, regulating cellular metabolism, transcription, cell cycle progression, cytoskeletal rearrangement and cell movement, apoptosis, and differentiation.

**Immunogen**

Purified recombinant extracellular fragment of human TYRO3 fused with hlgGfc tag expressed in HEK293 cell line.

**Formulation**

Ascitic fluid containing 0.03% sodium azide.

**TYRO3 Antibody - Additional Information**

**Gene ID** 7301

**Other Names**

Tyrosine-protein kinase receptor TYRO3, 2.7.10.1, Tyrosine-protein kinase BYK, Tyrosine-protein kinase DTK, Tyrosine-protein kinase RSE, Tyrosine-protein kinase SKY, Tyrosine-protein kinase TIF, TYRO3, BYK, DTK, RSE, SKY, TIF

**Dilution**

WB~~1/500 - 1/2000

E~~N/A

**Storage**

Maintain refrigerated at 2-8°C for up to 6 months. For long term storage store at -20°C in small

aliquots to prevent freeze-thaw cycles.

#### **Precautions**

TYRO3 Antibody is for research use only and not for use in diagnostic or therapeutic procedures.

### **TYRO3 Antibody - Protein Information**

**Name** TYRO3

**Synonyms** BYK, DTK, RSE, SKY, TIF

#### **Function**

Receptor tyrosine kinase that transduces signals from the extracellular matrix into the cytoplasm by binding to several ligands including TULP1 or GAS6. Regulates many physiological processes including cell survival, migration and differentiation. Ligand binding at the cell surface induces dimerization and autophosphorylation of TYRO3 on its intracellular domain that provides docking sites for downstream signaling molecules. Following activation by ligand, interacts with PIK3R1 and thereby enhances PI3-kinase activity. Activates the AKT survival pathway, including nuclear translocation of NF-kappa-B and up-regulation of transcription of NF-kappa-B-regulated genes. TYRO3 signaling plays a role in various processes such as neuron protection from excitotoxic injury, platelet aggregation and cytoskeleton reorganization. Also plays an important role in inhibition of Toll-like receptors (TLRs)-mediated innate immune response by activating STAT1, which selectively induces production of suppressors of cytokine signaling SOCS1 and SOCS3.

#### **Cellular Location**

Cell membrane; Single-pass type I membrane protein

#### **Tissue Location**

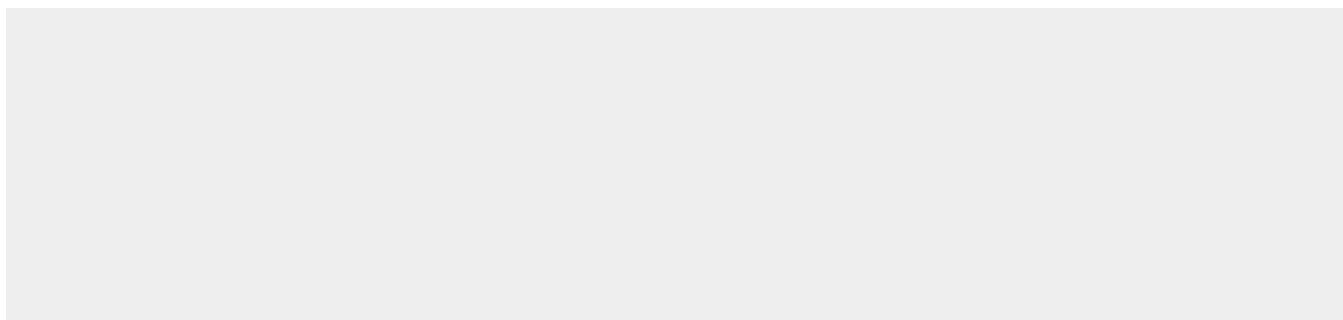
Abundant in the brain and lower levels in other tissues

### **TYRO3 Antibody - Protocols**

Provided below are standard protocols that you may find useful for product applications.

- [Western Blot](#)
- [Blocking Peptides](#)
- [Dot Blot](#)
- [Immunohistochemistry](#)
- [Immunofluorescence](#)
- [Immunoprecipitation](#)
- [Flow Cytometry](#)
- [Cell Culture](#)

### **TYRO3 Antibody - Images**



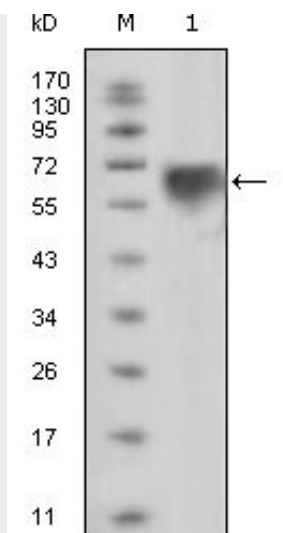


Figure 1: Western blot analysis using TYRO3 mouse mAb against extracellular domain of human TYRO3 (aa41-429).

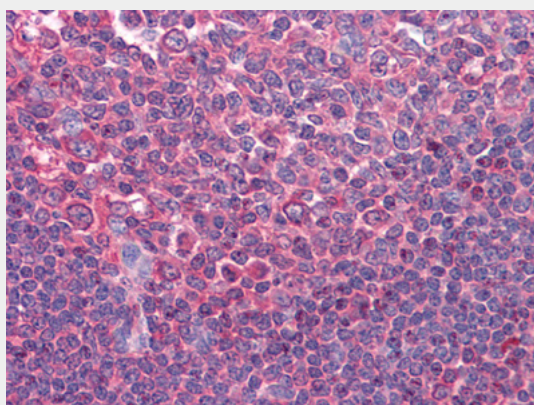


Figure 1: Immunohistochemical analysis of paraffin-embedded human Tonsil tissues using anti-CD80 mAb

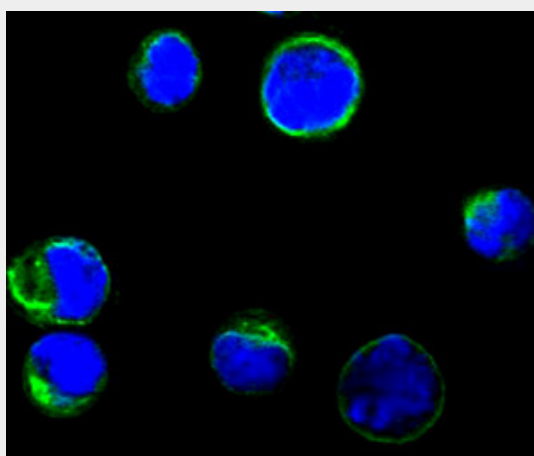


Figure 1: Confocal immunofluorescence analysis of BCBL-1 cells using anti-CD80 monoclonal antibody (green), showing membrane localization. Blue: DRAQ5 fluorescent DNA dye.

#### **TYRO3 Antibody - References**

1. Gene. 1993 Dec 8;134(2):289-93 2. J Biol Chem. 1996 Nov 22;271 3. Blood. 2000 Jan 15;95(2):633-8.