

**CD40 Antibody**  
**Purified Mouse Monoclonal Antibody**  
**Catalog # AO1304a****Specification**

---

**CD40 Antibody - Product Information**

Application	ICC, E
Primary Accession	<a href="#">P25942</a>
Reactivity	Human
Host	Mouse
Clonality	Monoclonal
Isotype	IgG1

**Description**

CD40 molecule, TNF receptor superfamily member 5. It is a member of the TNF-receptor superfamily. This receptor has been found to be essential in mediating a broad variety of immune and inflammatory responses including T cell-dependent immunoglobulin class switching, memory B cell development, and germinal center formation. AT-hook transcription factor AKNA is reported to coordinately regulate the expression of this receptor and its ligand, which may be important for homotypic cell interactions. Adaptor protein TNFR2 interacts with this receptor and serves as a mediator of the signal transduction. The interaction of this receptor and its ligand is found to be necessary for amyloid-beta-induced microglial activation, and thus is thought to be an early event in Alzheimer disease pathogenesis. Two alternatively spliced transcript variants of this gene encoding distinct isoforms have been reported.

**Immunogen**

Purified recombinant fragment of CD40 expressed in E. Coli.

**Formulation**

Ascitic fluid containing 0.03% sodium azide.

**CD40 Antibody - Additional Information**

**Gene ID** 958

**Other Names**

Tumor necrosis factor receptor superfamily member 5, B-cell surface antigen CD40, Bp50, CD40L receptor, CDw40, CD40, CD40, TNFRSF5

**Dilution**

ICC~~N/A

E~~N/A

**Storage**

Maintain refrigerated at 2-8°C for up to 6 months. For long term storage store at -20°C in small aliquots to prevent freeze-thaw cycles.

**Precautions**

CD40 Antibody is for research use only and not for use in diagnostic or therapeutic procedures.

## CD40 Antibody - Protein Information

**Name** CD40

**Synonyms** TNFRSF5

### Function

Receptor for TNFSF5/CD40LG (PubMed: <a href="http://www.uniprot.org/citations/31331973" target="\_blank">31331973</a>). Transduces TRAF6- and MAP3K8-mediated signals that activate ERK in macrophages and B cells, leading to induction of immunoglobulin secretion (By similarity).

### Cellular Location

[Isoform I]: Cell membrane; Single-pass type I membrane protein

### Tissue Location

B-cells and in primary carcinomas.

## CD40 Antibody - Protocols

Provided below are standard protocols that you may find useful for product applications.

- [Western Blot](#)
- [Blocking Peptides](#)
- [Dot Blot](#)
- [Immunohistochemistry](#)
- [Immunofluorescence](#)
- [Immunoprecipitation](#)
- [Flow Cytometry](#)
- [Cell Culture](#)

## CD40 Antibody - Images

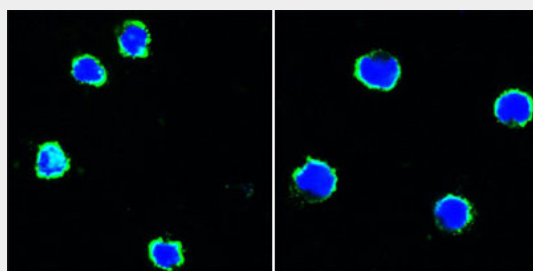


Figure 1: Confocal immunofluorescence analysis of human peripheral blood lymphocytes (left) and mouse L1210 cells (right) using CD40 mouse mAb (green). Blue: DRAQ5 fluorescent DNA dye.

## CD40 Antibody - References

1. Clin Cancer Res. 2003 Feb;9(2):722-8. 2. Clin Cancer Res. 2003 Feb;9(2):619-24. 3. Immunity. 1999 Sep;11(3):339-48.