

FLT1 Antibody
Purified Mouse Monoclonal Antibody
Catalog # AO1318a**Specification**

FLT1 Antibody - Product Information

Application	WB, E
Primary Accession	P17948
Reactivity	Human
Host	Mouse
Clonality	Monoclonal
Isotype	IgG1
Calculated MW	100kDa KDa

Description

Fms-related tyrosine kinase 1 (vascular endothelial growth factor/vascular permeability factor receptor), also known as FLT1 or VEGFR-1. It is a member of the vascular endothelial growth factor receptor (VEGFR) family. VEGFR family members are receptor tyrosine kinases (RTKs) which contain an extracellular ligand-binding region with seven immunoglobulin (Ig)-like domains, a transmembrane segment, and a tyrosine kinase (TK) domain within the cytoplasmic domain. This protein binds to VEGFR-A, VEGFR-B and placental growth factor and plays an important role in angiogenesis and vasculogenesis. Expression of this receptor is found in vascular endothelial cells, placental trophoblast cells and peripheral blood monocytes. Multiple transcript variants encoding different isoforms have been found for this gene. Isoforms include a full-length transmembrane receptor isoform and shortened, soluble isoforms. The soluble isoforms are associated with the onset of pre-eclampsia.

Immunogen

Purified recombinant extracellular fragment of human FLT1 fused with hlgGfc tag expressed in HEK293 cells.

Formulation

Ascitic fluid containing 0.03% sodium azide.

FLT1 Antibody - Additional Information

Gene ID 2321

Other Names

Vascular endothelial growth factor receptor 1, VEGFR-1, 2.7.10.1, Fms-like tyrosine kinase 1, FLT-1, Tyrosine-protein kinase FRT, Tyrosine-protein kinase receptor FLT, FLT, Vascular permeability factor receptor, FLT1, FLT, FRT, VEGFR1

Dilution

WB~~1/500 - 1/2000

E~~N/A

Storage

Maintain refrigerated at 2-8°C for up to 6 months. For long term storage store at -20°C in small aliquots to prevent freeze-thaw cycles.

Precautions

FLT1 Antibody is for research use only and not for use in diagnostic or therapeutic procedures.

FLT1 Antibody - Protein Information

Name FLT1

Synonyms FLT, FRT, VEGFR1

Function

Tyrosine-protein kinase that acts as a cell-surface receptor for VEGFA, VEGFB and PGF, and plays an essential role in the development of embryonic vasculature, the regulation of angiogenesis, cell survival, cell migration, macrophage function, chemotaxis, and cancer cell invasion. Acts as a positive regulator of postnatal retinal hyaloid vessel regression (By similarity). May play an essential role as a negative regulator of embryonic angiogenesis by inhibiting excessive proliferation of endothelial cells. Can promote endothelial cell proliferation, survival and angiogenesis in adulthood. Its function in promoting cell proliferation seems to be cell-type specific. Promotes PGF-mediated proliferation of endothelial cells, proliferation of some types of cancer cells, but does not promote proliferation of normal fibroblasts (in vitro). Has very high affinity for VEGFA and relatively low protein kinase activity; may function as a negative regulator of VEGFA signaling by limiting the amount of free VEGFA and preventing its binding to KDR. Modulates KDR signaling by forming heterodimers with KDR. Ligand binding leads to the activation of several signaling cascades. Activation of PLCG leads to the production of the cellular signaling molecules diacylglycerol and inositol 1,4,5-trisphosphate and the activation of protein kinase C. Mediates phosphorylation of PIK3R1, the regulatory subunit of phosphatidylinositol 3-kinase, leading to activation of phosphatidylinositol kinase and the downstream signaling pathway. Mediates activation of MAPK1/ERK2, MAPK3/ERK1 and the MAP kinase signaling pathway, as well as of the AKT1 signaling pathway. Phosphorylates SRC and YES1, and may also phosphorylate CBL. Promotes phosphorylation of AKT1 at 'Ser-473'. Promotes phosphorylation of PTK2/FAK1 (PubMed:16685275).

Cellular Location

[Isoform 1]: Cell membrane; Single-pass type I membrane protein. Endosome.

Note=Autophosphorylation promotes ubiquitination and endocytosis [Isoform 3]: Secreted.

[Isoform 5]: Cytoplasm. [Isoform 7]: Cytoplasm.

Tissue Location

Detected in normal lung, but also in placenta, liver, kidney, heart and brain tissues. Specifically expressed in most of the vascular endothelial cells, and also expressed in peripheral blood monocytes. Isoform 2 is strongly expressed in placenta. Isoform 3 is expressed in corneal epithelial cells (at protein level). Isoform 3 is expressed in vascular smooth muscle cells (VSMC)

FLT1 Antibody - Protocols

Provided below are standard protocols that you may find useful for product applications.

- [Western Blot](#)
- [Blocking Peptides](#)
- [Dot Blot](#)
- [Immunohistochemistry](#)
- [Immunofluorescence](#)
- [Immunoprecipitation](#)
- [Flow Cytometry](#)

- [Cell Culture](#)

FLT1 Antibody - Images

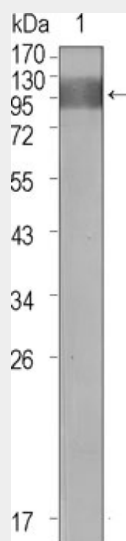


Figure 1: Western blot analysis using FLT1 mouse mAb against extracellular domain of human FLT1.

FLT1 Antibody - References

1. Mol Med. 2006 Jul-Aug;12(7-8):127-36.
2. Oncogene. 1997 May 29;14(21):2553-61.