

ITGA5 Antibody
Purified Mouse Monoclonal Antibody
Catalog # AO1336a**Specification**

ITGA5 Antibody - Product Information

Application	WB, IHC, FC, E
Primary Accession	P08648
Reactivity	Human
Host	Mouse
Clonality	Monoclonal
Isotype	IgG2a
Calculated MW	114kDa KDa

Description

The product of this gene belongs to the integrin alpha chain family. Integrins are heterodimeric integral membrane proteins composed of an alpha chain and a beta chain. This gene encodes the integrin alpha 5 chain. Alpha chain 5 undergoes post-translational cleavage in the extracellular domain to yield disulfide-linked light and heavy chains that join with beta 1 to form a fibronectin receptor. In addition to adhesion, integrins are known to participate in cell-surface mediated signalling. Integrin alpha 5 is a heterodimer that associates noncovalently with CD29/integrin beta 1 subunit to form the alpha-5-beta-1 very late antigen (VLA-5) complex. VLA-5 is a fibronectin receptor that is expressed on thymocytes, T-cells, monocytes and platelets. It is also found on very early B-cells and activated B-cells. VLA-5-mediated binding to fibronectin sends a costimulatory signal to T-cells and enhances Fc-gamma-R- and complement receptor-mediated phago-cytosis. It is also involved in monocyte migration into extracellular tissues.

Immunogen

Purified recombinant fragment of human ITGA5 expressed in E. Coli.

Formulation

Ascitic fluid containing 0.03% sodium azide.

ITGA5 Antibody - Additional Information

Gene ID 3678

Other Names

Integrin alpha-5, CD49 antigen-like family member E, Fibronectin receptor subunit alpha, Integrin alpha-F, VLA-5, CD49e, Integrin alpha-5 heavy chain, Integrin alpha-5 light chain, ITGA5, FNRA

Dilution

WB~~1/500 - 1/2000
IHC~~1/200 - 1/1000
FC~~1/200 - 1/400
E~~N/A

Storage

Maintain refrigerated at 2-8°C for up to 6 months. For long term storage store at -20°C in small aliquots to prevent freeze-thaw cycles.

Precautions

ITGA5 Antibody is for research use only and not for use in diagnostic or therapeutic procedures.

ITGA5 Antibody - Protein Information

Name ITGA5 ([HGNC:6141](#))

Synonyms FNRA

Function

Integrin alpha-5/beta-1 (ITGA5:ITGB1) is a receptor for fibronectin and fibrinogen. It recognizes the sequence R-G-D in its ligands. ITGA5:ITGB1 binds to PLA2G2A via a site (site 2) which is distinct from the classical ligand-binding site (site 1) and this induces integrin conformational changes and enhanced ligand binding to site 1 (PubMed:18635536, PubMed:25398877). ITGA5:ITGB1 acts as a receptor for fibrillin-1 (FBN1) and mediates R-G-D-dependent cell adhesion to FBN1 (PubMed:12807887, PubMed:17158881). ITGA5:ITGB1 acts as a receptor for fibronectin (FN1) and mediates R-G-D-dependent cell adhesion to FN1 (PubMed:33962943). ITGA5:ITGB1 is a receptor for IL1B and binding is essential for IL1B signaling (PubMed:29030430). ITGA5:ITGB3 is a receptor for soluble CD40LG and is required for CD40/CD40LG signaling (PubMed:31331973).

Cellular Location

Cell membrane; Single-pass type I membrane protein. Cell junction, focal adhesion

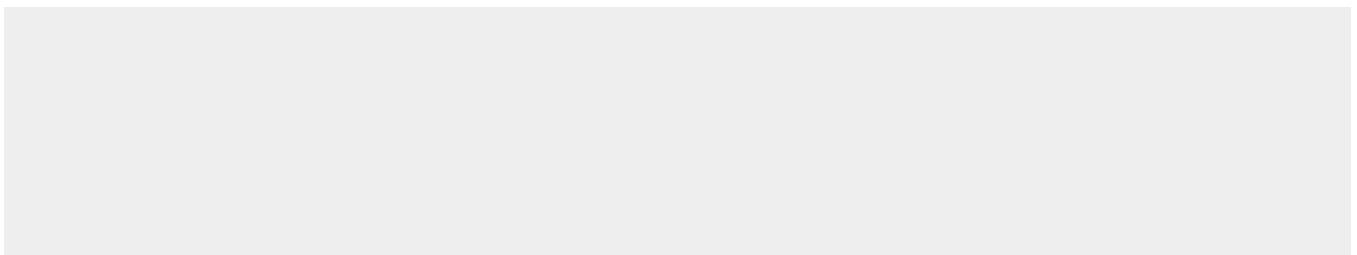
Tissue Location

Expressed in placenta (at protein level).

ITGA5 Antibody - Protocols

Provided below are standard protocols that you may find useful for product applications.

- [Western Blot](#)
- [Blocking Peptides](#)
- [Dot Blot](#)
- [Immunohistochemistry](#)
- [Immunofluorescence](#)
- [Immunoprecipitation](#)
- [Flow Cytometry](#)
- [Cell Culture](#)

ITGA5 Antibody - Images

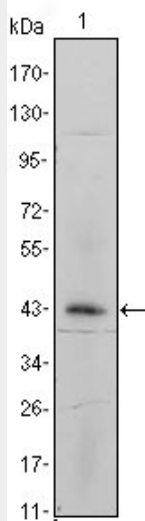


Figure 1: Western blot analysis using ITGA5 mouse mAb against ITGA5-hlgGfc transfected HEK293 cell lysate.

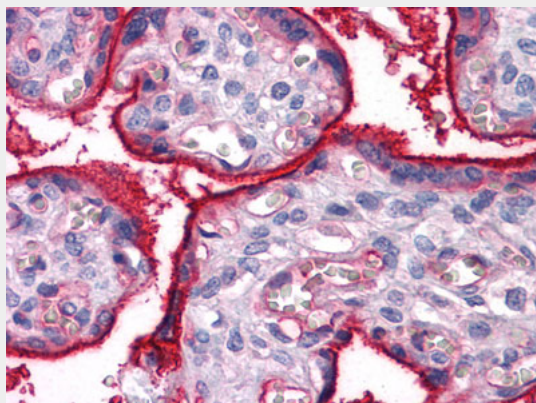


Figure 2: Immunohistochemical analysis of paraffin-embedded human Placenta tissues using ITGA5 mouse mAb

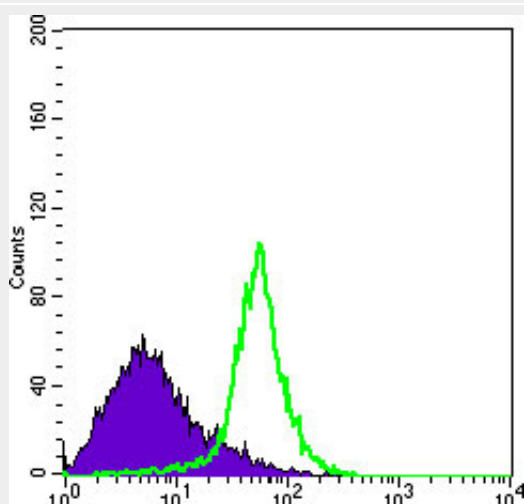


Figure 3: Flow cytometric analysis of Hela cells using ITGA5 mouse mAb (green) and negative control (purple).

ITGA5 Antibody - References

1. Proc Natl Acad Sci USA. 1993. 90(22):10553-7 2. J Cell Biol. 1998. 143(7):2081-92 3. Mol Biol Cell. 2000. 11(9):3109-21 4. J Cell Biol. 2001. 152(1):65-73 5. J Biol Chem. 2002. 277(22):19800-5