

CSF1 Antibody
Purified Mouse Monoclonal Antibody
Catalog # AO1361a**Specification**

CSF1 Antibody - Product Information

Application	WB, IHC, E
Primary Accession	P09603
Reactivity	Human
Host	Mouse
Clonality	Monoclonal
Isotype	IgG1
Calculated MW	60kDa KDa

Description

CSF1, also known as MCSF, is a four- α -helical bundle cytokine that controls the production, differentiation, and function of macrophages. The active form of the protein is found extracellularly as a disulfide-linked homodimer, and is thought to be produced by proteolytic cleavage of membrane-bound precursors. This protein may be involved in development of the placenta.

Immunogen

Purified recombinant fragment of human CSF1 expressed in E. Coli.

Formulation

Ascitic fluid containing 0.03% sodium azide.

CSF1 Antibody - Additional Information

Gene ID 1435

Other Names

Macrophage colony-stimulating factor 1, CSF-1, M-CSF, MCSF, Lanimostim, Processed macrophage colony-stimulating factor 1, CSF1

Dilution

WB~~1/500 - 1/2000

IHC~~1/200 - 1/1000

E~~N/A

Storage

Maintain refrigerated at 2-8°C for up to 6 months. For long term storage store at -20°C in small aliquots to prevent freeze-thaw cycles.

Precautions

CSF1 Antibody is for research use only and not for use in diagnostic or therapeutic procedures.

CSF1 Antibody - Protein Information

Name CSF1**Function**

Cytokine that plays an essential role in the regulation of survival, proliferation and differentiation of hematopoietic precursor cells, especially mononuclear phagocytes, such as macrophages and monocytes. Promotes the release of pro-inflammatory chemokines, and thereby plays an important role in innate immunity and in inflammatory processes. Plays an important role in the regulation of osteoclast proliferation and differentiation, the regulation of bone resorption, and is required for normal bone development. Required for normal male and female fertility. Promotes reorganization of the actin cytoskeleton, regulates formation of membrane ruffles, cell adhesion and cell migration. Plays a role in lipoprotein clearance.

Cellular Location

Cell membrane; Single-pass type I membrane protein

CSF1 Antibody - Protocols

Provided below are standard protocols that you may find useful for product applications.

- [Western Blot](#)
- [Blocking Peptides](#)
- [Dot Blot](#)
- [Immunohistochemistry](#)
- [Immunofluorescence](#)
- [Immunoprecipitation](#)
- [Flow Cytometry](#)
- [Cell Culture](#)

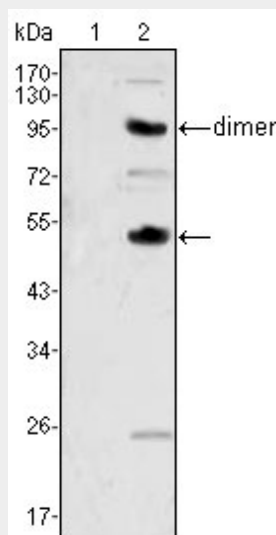
CSF1 Antibody - Images

Figure 1: Western blot analysis using CSF1 mouse mAb against human recombinant CSF2(AA:18-144) (1) and CSF1(AA:33-496) (2).

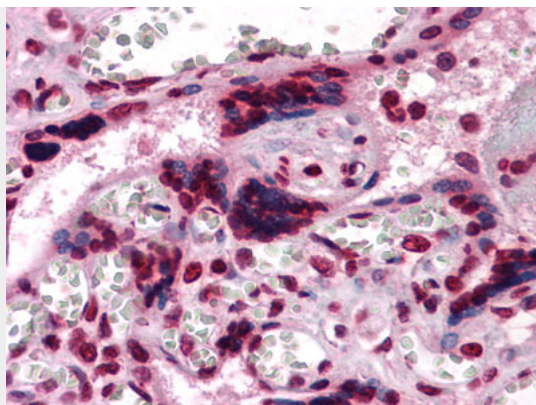


Figure 2: Immunohistochemical analysis of paraffin-embedded human Placenta tissues using anti-CSF1 mouse mAb

CSF1 Antibody - References

1. J Biol Chem. 1992 Feb 5;267(4):2190-9.
2. FEBS Lett. 1987 Oct 5;222(2):341-4.
3. Mol Reprod Dev. 1997 Jan;46(1):4-10.