

CK7 Antibody
Purified Mouse Monoclonal Antibody
Catalog # AO1366a**Specification**

CK7 Antibody - Product Information

Application	WB, FC, E
Primary Accession	P08729
Reactivity	Human
Host	Mouse
Clonality	Monoclonal
Isotype	IgG1
Calculated MW	51kDa KDa

Description

CK7 (Keratin, type II cytoskeletal 7) is a protein that in humans is encoded by the KRT7 gene. CK7 is a member of the keratin family. It is specifically expressed in the simple epithelia lining the cavities of the internal organs and in the gland ducts and blood vessels. The protein encoded by this gene is a member of the keratin gene family. The type II cytokeratins consist of basic or neutral proteins which are arranged in pairs of heterotypic keratin chains coexpressed during differentiation of simple and stratified epithelial tissues. This type II cytokeratin is specifically expressed in the simple epithelia lining the cavities of the internal organs and in the gland ducts and blood vessels. The genes encoding the type II cytokeratins are clustered in a region of chromosome 12q12-q13. Alternative splicing may result in several transcript variants; however, not all variants have been fully described.

Immunogen

Purified recombinant fragment of human CK7 expressed in E. Coli.

Formulation

Ascitic fluid containing 0.03% sodium azide.

CK7 Antibody - Additional Information

Gene ID 3855

Other Names

Keratin, type II cytoskeletal 7, Cytokeratin-7, CK-7, Keratin-7, K7, Sarcolectin, Type-II keratin Kb7, KRT7, SCL

Dilution

WB~~1/500 - 1/2000
FC~~1/200 - 1/400
E~~N/A

Storage

Maintain refrigerated at 2-8°C for up to 6 months. For long term storage store at -20°C in small aliquots to prevent freeze-thaw cycles.

Precautions

CK7 Antibody is for research use only and not for use in diagnostic or therapeutic procedures.

CK7 Antibody - Protein Information

Name KRT7

Synonyms SCL

Function

Blocks interferon-dependent interphase and stimulates DNA synthesis in cells. Involved in the translational regulation of the human papillomavirus type 16 E7 mRNA (HPV16 E7).

Cellular Location

Cytoplasm.

Tissue Location

Expressed in cultured epidermal, bronchial and mesothelial cells but absent in colon, ectocervix and liver. Observed throughout the glandular cells in the junction between stomach and esophagus but is absent in the esophagus.

CK7 Antibody - Protocols

Provided below are standard protocols that you may find useful for product applications.

- [Western Blot](#)
- [Blocking Peptides](#)
- [Dot Blot](#)
- [Immunohistochemistry](#)
- [Immunofluorescence](#)
- [Immunoprecipitation](#)
- [Flow Cytometry](#)
- [Cell Culture](#)

CK7 Antibody - Images

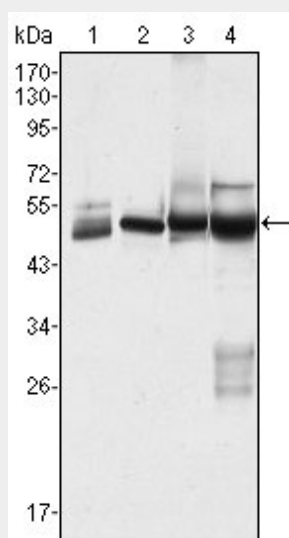


Figure 1: Western blot analysis using CK7 mouse mAb against Hela (1), MCF-7 (2), A431 (3) and A549 (4) cell lysate.

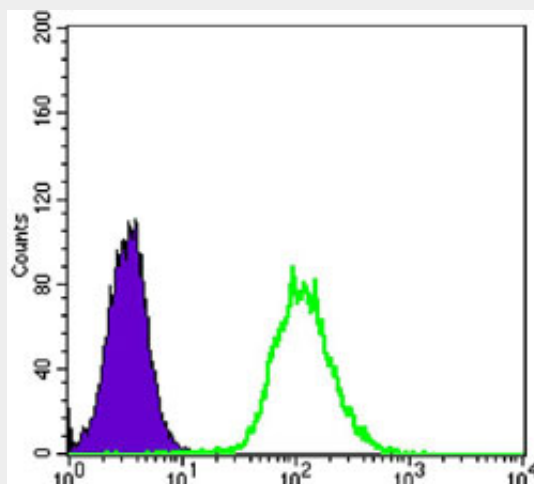


Figure 2: Flow cytometric analysis of Hela cells using anti-CK7 mAb (green) and negative control (purple).

CK7 Antibody - References

1. Cytogenet Cell Genet. 1991;57(1):33-8.
2. J Pathol. 1998 Mar;184(3):234-9.
3. J Cell Biol. 2006 Jul 17;174(2):169-74.