

**EGF Antibody**  
**Purified Mouse Monoclonal Antibody**  
**Catalog # AO1368a****Specification**

---

**EGF Antibody - Product Information**

Application	WB, ICC, E
Primary Accession	<a href="#">P01133</a>
Reactivity	Human
Host	Mouse
Clonality	Monoclonal
Isotype	IgG1
Calculated MW	134kDa KDa

**Description**

Epidermal growth factor has a profound effect on the differentiation of specific cells in vivo and is a potent mitogenic factor for a variety of cultured cells of both ectodermal and mesodermal origin. The EGF precursor is believed to exist as a membrane-bound molecule which is proteolytically cleaved to generate the 53-amino acid peptide hormone that stimulates cells to divide.

**Immunogen**

Purified recombinant fragment of human EGF expressed in E. Coli. <br />

**Formulation**

Ascitic fluid containing 0.03% sodium azide. <br />

**EGF Antibody - Additional Information**

**Gene ID** 1950

**Other Names**

Pro-epidermal growth factor, EGF, Epidermal growth factor, Urogastrone, EGF

**Dilution**

WB~~1/500 - 1/2000

ICC~~N/A

E~~N/A

**Storage**

Maintain refrigerated at 2-8°C for up to 6 months. For long term storage store at -20°C in small aliquots to prevent freeze-thaw cycles.

**Precautions**

EGF Antibody is for research use only and not for use in diagnostic or therapeutic procedures.

**EGF Antibody - Protein Information**

**Name** EGF

**Function**

EGF stimulates the growth of various epidermal and epithelial tissues in vivo and in vitro and of some fibroblasts in cell culture. Magnesiotropic hormone that stimulates magnesium reabsorption in the renal distal convoluted tubule via engagement of EGFR and activation of the magnesium channel TRPM6. Can induce neurite outgrowth in motoneurons of the pond snail *Lymnaea stagnalis* in vitro (PubMed:<a href="http://www.uniprot.org/citations/10964941" target="\_blank">10964941</a>).

**Cellular Location**

Membrane; Single-pass type I membrane protein.

**Tissue Location**

Expressed in kidney, salivary gland, cerebrum and prostate.

**EGF Antibody - Protocols**

Provided below are standard protocols that you may find useful for product applications.

- [Western Blot](#)
- [Blocking Peptides](#)
- [Dot Blot](#)
- [Immunohistochemistry](#)
- [Immunofluorescence](#)
- [Immunoprecipitation](#)
- [Flow Cytometry](#)
- [Cell Culture](#)

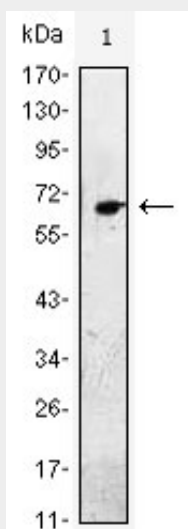
**EGF Antibody - Images**

Figure 1: Western blot analysis using EGF mAb against EGF(AA: 971-1023)-hlgGFc transfected HEK293 cell lysate.

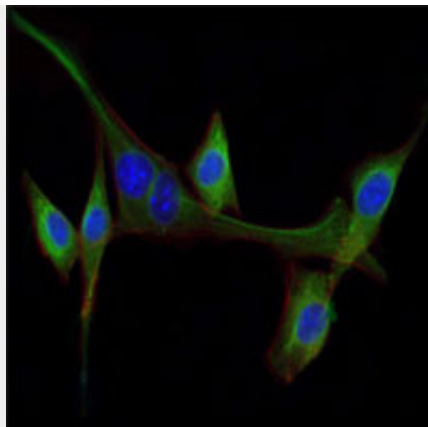


Figure 2: Immunofluorescence analysis of NIH/3T3 cells using EGF mouse mAb (green). Blue: DRAQ5 fluorescent DNA dye. Red: Actin filaments have been labeled with Alexa Fluor-555 phalloidin.

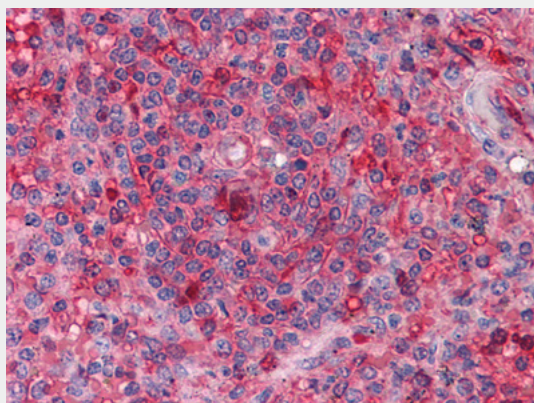


Figure 2: Immunohistochemical analysis of paraffin-embedded human Spleen tissues using anti-ARNTL mouse mAb

#### **EGF Antibody - References**

1. Biochem J. 1992 Dec 1;288 ( Pt 2):395-405.
2. Oncogene. 2000 Mar 16;19(12):1509-18.
3. Nature. 2002 Mar 14;416(6877):183-7.
4. Radiat Res. 2003 Apr;159(4):439-52.