

CSF2 Antibody
Purified Mouse Monoclonal Antibody
Catalog # AO1376a**Specification**

CSF2 Antibody - Product Information

Application	WB, E
Primary Accession	P04141
Reactivity	Human
Host	Mouse
Clonality	Monoclonal
Isotype	IgG1
Calculated MW	16kDa KDa

Description

The protein encoded by this gene is a cytokine that controls the production, differentiation, and function of granulocytes and macrophages. The active form of the protein is found extracellularly as a homodimer. This gene has been localized to a cluster of related genes at chromosome region 5q31, which is known to be associated with interstitial deletions in the 5q- syndrome and acute myelogenous leukemia. Other genes in the cluster include those encoding interleukins 4, 5, and 13.

Immunogen

Purified recombinant fragment of human CSF2 (aa18-144) expressed in E. Coli.

Formulation

Ascitic fluid containing 0.03% sodium azide.

CSF2 Antibody - Additional Information

Gene ID 1437

Other Names

Granulocyte-macrophage colony-stimulating factor, GM-CSF, Colony-stimulating factor, CSF, Molgramostin, Sargramostim, CSF2, GMCSF

Dilution

WB~~1/500 - 1/2000

E~~N/A

Storage

Maintain refrigerated at 2-8°C for up to 6 months. For long term storage store at -20°C in small aliquots to prevent freeze-thaw cycles.

Precautions

CSF2 Antibody is for research use only and not for use in diagnostic or therapeutic procedures.

CSF2 Antibody - Protein Information

Name CSF2

Synonyms GMCSF

Function

Cytokine that stimulates the growth and differentiation of hematopoietic precursor cells from various lineages, including granulocytes, macrophages, eosinophils and erythrocytes.

Cellular Location

Secreted

CSF2 Antibody - Protocols

Provided below are standard protocols that you may find useful for product applications.

- [Western Blot](#)
- [Blocking Peptides](#)
- [Dot Blot](#)
- [Immunohistochemistry](#)
- [Immunofluorescence](#)
- [Immunoprecipitation](#)
- [Flow Cytometry](#)
- [Cell Culture](#)

CSF2 Antibody - Images

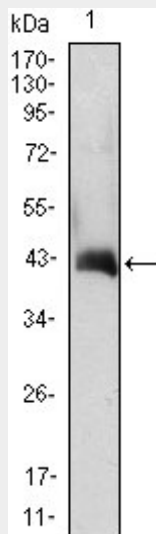


Figure 1: Western blot analysis using CSF2 mAb against CSF2(AA: 18-144)-hlgGfC transfected HEK293 cell lysate.

CSF2 Antibody - References

1. Eur Respir J. 2008 Jul;32(1):25-34.
2. Cell. 2008 Aug 8;134(3):496-507.
3. Mol Immunol. 2008 Nov;46(1):37-44.