

PTH Antibody
Purified Mouse Monoclonal Antibody
Catalog # AO1377a**Specification**

PTH Antibody - Product Information

Application	WB, E
Primary Accession	P01270
Reactivity	Human
Host	Mouse
Clonality	Monoclonal
Isotype	IgG2b
Calculated MW	12.9kDa KDa

Description

The protein encoded by this gene is a hormone secreted by parathyroid cells. This hormone elevates blood Ca²⁺ level by dissolving the salts in bone and preventing their renal excretion. Defects in this gene are a cause of familial isolated hypoparathyroidism (FIH).

Immunogen

Purified recombinant fragment of human PTH(aa1-115) expressed in E. Coli.

Formulation

Ascitic fluid containing 0.03% sodium azide.

PTH Antibody - Additional Information

Gene ID 5741

Other Names

Parathyroid hormone, PTH, Parathormone, Parathyrin, PTH

Dilution

WB~~1/500 - 1/2000

E~~N/A

Storage

Maintain refrigerated at 2-8°C for up to 6 months. For long term storage store at -20°C in small aliquots to prevent freeze-thaw cycles.

Precautions

PTH Antibody is for research use only and not for use in diagnostic or therapeutic procedures.

PTH Antibody - Protein Information

Name PTH {ECO:0000303|PubMed:35932760, ECO:0000312|HGNC:HGNC:9606}

Function

Parathyroid hormone elevates calcium level by dissolving the salts in bone and preventing their renal excretion (PubMed:11604398, PubMed:35932760). Acts by binding to its receptor, PTH1R, activating G protein-coupled receptor signaling (PubMed:18375760, PubMed:35932760). Stimulates [1-14C]-2-deoxy-D-glucose (2DG) transport and glycogen synthesis in osteoblastic cells (PubMed:21076856).

Cellular Location

Secreted

PTH Antibody - Protocols

Provided below are standard protocols that you may find useful for product applications.

- [Western Blot](#)
- [Blocking Peptides](#)
- [Dot Blot](#)
- [Immunohistochemistry](#)
- [Immunofluorescence](#)
- [Immunoprecipitation](#)
- [Flow Cytometry](#)
- [Cell Culture](#)

PTH Antibody - Images

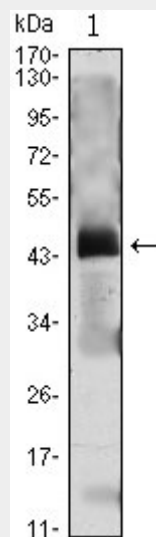


Figure 1: Western blot analysis using PTH mAb against PTH(AA: 1-115)-hlgGfC transfected HEK293 cell lysate.

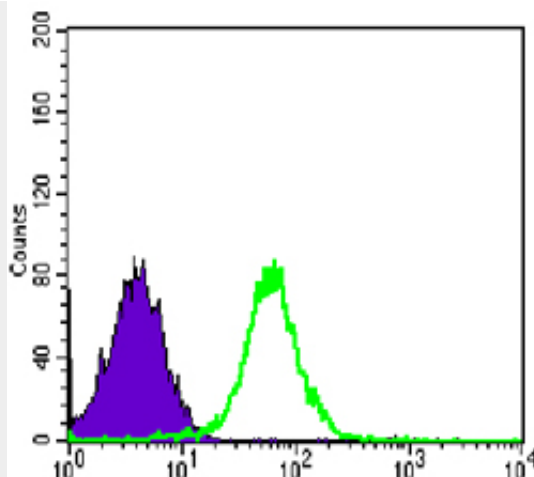


Figure 4: Flow cytometric analysis of PC-2 cells using CDH2 mouse mAb (green) and negative control (purple).

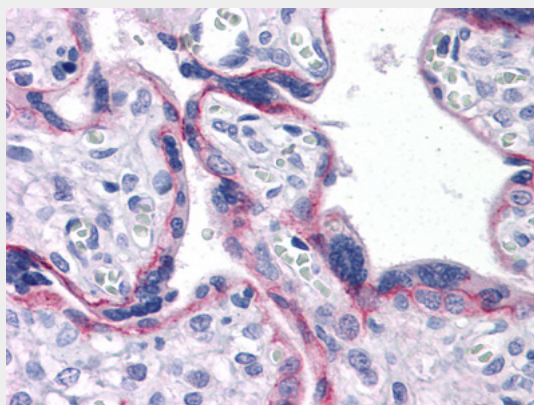


Figure 3: Immunohistochemical analysis of paraffin-embedded human Placenta tissues using CDH2 mouse mAb

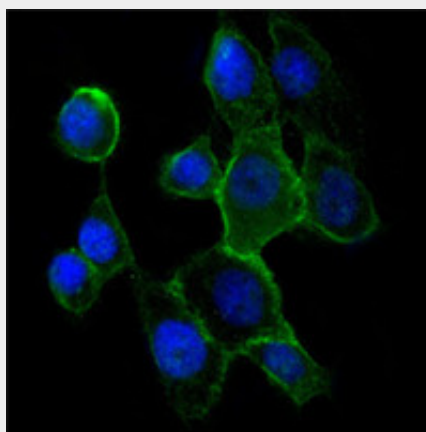


Figure 3: Immunofluorescence analysis of A431 cells using CDH2 mouse mAb (green). Blue: DRAQ5 fluorescent DNA dye.

PTH Antibody - References

1. Eur Spine J. 2006 Oct;15(10):1521-8. 2. Blood. 2008 May 1;111(9):4496-9. 3. Clin J Am Soc Nephrol. 2009 Sep;4(9):1465-76.