

A1BG Antibody
Purified Mouse Monoclonal Antibody
Catalog # AO1378a**Specification**

A1BG Antibody - Product Information

Application	WB, IHC, E
Primary Accession	P04217
Reactivity	Human
Host	Mouse
Clonality	Monoclonal
Isotype	IgG1
Calculated MW	54kDa KDa

Description

A1BG is a plasma glycoprotein of unknown function. It shows sequence similarity to the variable regions of some immunoglobulin supergene family member proteins. A1BG was recently shown to bind cysteine rich secretory protein 3 (CRISP 3) with high affinity, and it has been suggested that A1BG protects against the potentially toxic effects of CRISP 3 in the circulation.

Immunogen

Purified recombinant fragment of human A1BG expressed in E. Coli.

Formulation

Ascitic fluid containing 0.03% sodium azide.

A1BG Antibody - Additional Information**Gene ID 1****Other Names**

Alpha-1B-glycoprotein, Alpha-1-B glycoprotein, A1BG

Dilution

WB~~1/500 - 1/2000

IHC~~1/200 - 1/1000

E~~N/A

Storage

Maintain refrigerated at 2-8°C for up to 6 months. For long term storage store at -20°C in small aliquots to prevent freeze-thaw cycles.

Precautions

A1BG Antibody is for research use only and not for use in diagnostic or therapeutic procedures.

A1BG Antibody - Protein Information

Name A1BG

Cellular Location
Secreted.

Tissue Location
Plasma.

A1BG Antibody - Protocols

Provided below are standard protocols that you may find useful for product applications.

- [Western Blot](#)
- [Blocking Peptides](#)
- [Dot Blot](#)
- [Immunohistochemistry](#)
- [Immunofluorescence](#)
- [Immunoprecipitation](#)
- [Flow Cytometry](#)
- [Cell Culture](#)

A1BG Antibody - Images

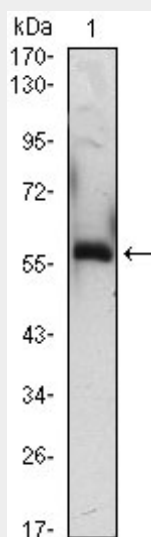


Figure 1: Western blot analysis using A1BG mouse mAb against A1BG(AA: 320-495)-hIgGfc transfected HEK293 (1) cell lysate.

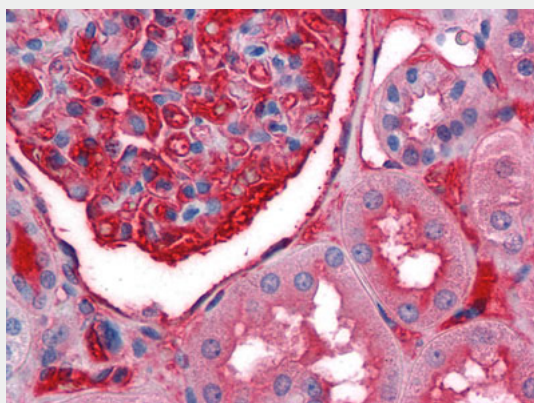


Figure 2: Immunohistochemical analysis of paraffin-embedded human Kidney tissues using anti-A1BG mouse mAb

A1BG Antibody - References

1. Hum Genet. 1987 Jun;76(2):111-5. 2. Proteomics. 2004 Feb;4(2):454-65. 3. BMC Cancer. 2008 Aug 16;8:241.