

**MUM1 Antibody**  
**Purified Mouse Monoclonal Antibody**  
**Catalog # AO1401a****Specification**

---

**MUM1 Antibody - Product Information**

Application	WB, IHC, E
Primary Accession	<a href="#">Q2TAK8</a>
Reactivity	Human
Host	Mouse
Clonality	Monoclonal
Isotype	IgG1
Calculated MW	78.6kDa KDa

**Description**

Mutated melanoma-associated antigen 1 (MUM1) is a 78 kDa protein encoded by the MUM1 gene. MUM1 is expressed in a subset of B cells in the light zone of the germinal center, plasma cells, activated T cells and a wide spectrum of related hematolymphoid neoplasms. Antibodies to MUM1 are useful in the sub classification of lymphoid malignancies.

**Immunogen**

Purified recombinant fragment of human MUM1 expressed in E. Coli. <br />

**Formulation**

Ascitic fluid containing 0.03% sodium azide.

**MUM1 Antibody - Additional Information**

**Gene ID** 84939

**Other Names**

PWWP domain-containing protein MUM1, Mutated melanoma-associated antigen 1, MUM-1, Protein expandere, MUM1, EXPAND1

**Dilution**

WB~~1/500 - 1/2000

IHC~~1/500 - 1/2000

E~~N/A

**Storage**

Maintain refrigerated at 2-8°C for up to 6 months. For long term storage store at -20°C in small aliquots to prevent freeze-thaw cycles.

**Precautions**

MUM1 Antibody is for research use only and not for use in diagnostic or therapeutic procedures.

**MUM1 Antibody - Protein Information**

**Name** PWWP3A ([HGNC:29641](#))

**Function**

Involved in the DNA damage response pathway by contributing to the maintenance of chromatin architecture. Recruited to the vicinity of DNA breaks by TP53BP1 and plays an accessory role to facilitate damage-induced chromatin changes and promoting chromatin relaxation. Required for efficient DNA repair and cell survival following DNA damage.

**Cellular Location**

Nucleus. Note=Recruited to DNA damage sites via its interaction with the BRCT domain of TP53BP1

**MUM1 Antibody - Protocols**

Provided below are standard protocols that you may find useful for product applications.

- [Western Blot](#)
- [Blocking Peptides](#)
- [Dot Blot](#)
- [Immunohistochemistry](#)
- [Immunofluorescence](#)
- [Immunoprecipitation](#)
- [Flow Cytometry](#)
- [Cell Culture](#)

**MUM1 Antibody - Images**

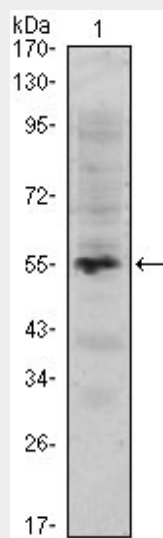


Figure 1: Western blot analysis using MUM1 mAb against human MUM1 (AA: 590-711) recombinant protein. (Expected MW is 39.8 kDa)

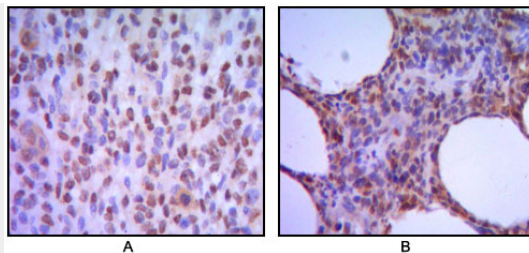


Figure 2: Immunohistochemical analysis of paraffin-embedded human melanoma (A), non-Hodgkin`s lymphoma (B), using MUM1 mouse mAb with DAB staining.

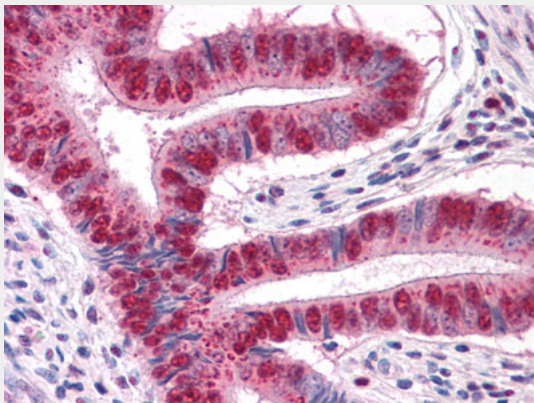


Figure 3: Immunohistochemical analysis of paraffin-embedded human Uterus tissues using MUM1 mouse mAb

#### **MUM1 Antibody - References**

1. Genome Res. 1996 Sep;6(9):791-806.
2. Proc Natl Acad Sci U S A. 2002 Dec 24;99(26):16899-903.