

ALPP Antibody
Purified Mouse Monoclonal Antibody
Catalog # AO1414a**Specification**

ALPP Antibody - Product Information

Application	WB, IHC, E
Primary Accession	P05187
Reactivity	Human
Host	Mouse
Clonality	Monoclonal
Isotype	IgG2b
Calculated MW	58kDa KDa

Description

There are at least four distinct but related alkaline phosphatases: intestinal, placental, placental-like, and liver/bone/kidney (tissue non-specific). The first three are located together on chromosome 2 while the tissue non-specific form is located on chromosome 1. The product of this gene is a membrane bound glycosylated enzyme, also referred to as the heat stable form, that is expressed primarily in the placenta although it is closely related to the intestinal form of the enzyme as well as to the placental-like form. The coding sequence for this form of alkaline phosphatase is unique in that the 3' untranslated region contains multiple copies of an Alu family repeat. In addition, this gene is polymorphic and three common alleles (type 1, type 2 and type 3) for this form of alkaline phosphatase have been well characterized.

Immunogen

Purified recombinant fragment of human ALPP expressed in E. Coli.

Formulation

Ascitic fluid containing 0.03% sodium azide.

ALPP Antibody - Additional Information

Gene ID 250

Other Names

Alkaline phosphatase, placental type, 3.1.3.1, Alkaline phosphatase Regan isozyme, Placental alkaline phosphatase 1, PLAP-1, ALPP, PLAP

Dilution

WB~~1/500 - 1/2000

IHC~~1/200 - 1/1000

E~~N/A

Storage

Maintain refrigerated at 2-8°C for up to 6 months. For long term storage store at -20°C in small aliquots to prevent freeze-thaw cycles.

Precautions

ALPP Antibody is for research use only and not for use in diagnostic or therapeutic procedures.

ALPP Antibody - Protein Information

Name ALPP ([HGNC:439](#))

Function

Alkaline phosphatase that can hydrolyze various phosphate compounds.

Cellular Location

Cell membrane; Lipid-anchor, GPI-anchor

Tissue Location

Detected in placenta (at protein level).

ALPP Antibody - Protocols

Provided below are standard protocols that you may find useful for product applications.

- [Western Blot](#)
- [Blocking Peptides](#)
- [Dot Blot](#)
- [Immunohistochemistry](#)
- [Immunofluorescence](#)
- [Immunoprecipitation](#)
- [Flow Cytometry](#)
- [Cell Culture](#)

ALPP Antibody - Images

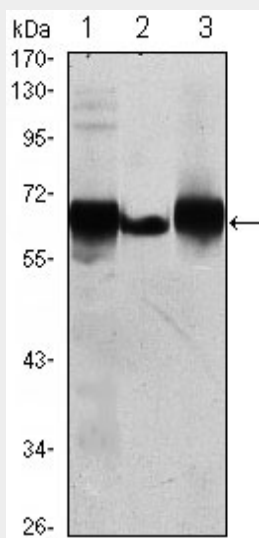


Figure 1: Western blot analysis using ALPP mouse mAb against HepG2 (1), A431 (2) and MCF-7 (3) cell lysate.

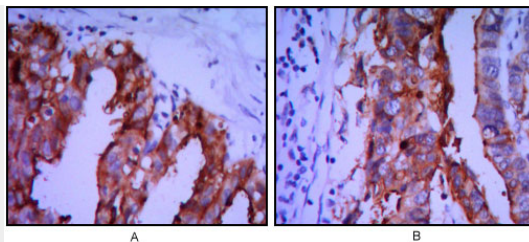


Figure 2: Immunohistochemical analysis of paraffin-embedded ovarian cancer (A), stomach cancer (B) using ALPP mouse mAb with DAB staining.

ALPP Antibody - References

1. J Cell Biochem. 2003 Apr 1;88(5):1025-37.
2. J Mol Biol. 2005 Jul 15;350(3):441-51.