

STAT6 Antibody
Purified Mouse Monoclonal Antibody
Catalog # AO1421a**Specification**

STAT6 Antibody - Product Information

Application	WB, ICC, E
Primary Accession	P42226
Reactivity	Human, Mouse, Rat, Monkey
Host	Mouse
Clonality	Monoclonal
Isotype	IgG1
Calculated MW	94kDa KDa

Description

STAT6 protein is a transcription factor activated by cytokines, particularly interleukin 4 and IL 13. (STAT6-/-) were found to be deficient in IL 4 mediated functions including Th2 helper T cell differentiation, expression of cell surface markers, T cell proliferation, immunoglobulin class switching to IgE, and partial loss of IL 4 mediated proliferation. STAT6 mRNA has been detected in peripheral blood lymphocytes, colon, intestine, ovary, prostate, thymus, spleen, kidney, liver, lung and placenta. STAT6 is critically involved in Th2 immune response.

Immunogen

Purified recombinant fragment of human STAT6 expressed in E. Coli.

Formulation

Ascitic fluid containing 0.03% sodium azide.

STAT6 Antibody - Additional Information

Gene ID 6778

Other Names

Signal transducer and activator of transcription 6, IL-4 Stat, STAT6

Dilution

WB~~1/500 - 1/2000

ICC~~N/A

E~~N/A

Storage

Maintain refrigerated at 2-8°C for up to 6 months. For long term storage store at -20°C in small aliquots to prevent freeze-thaw cycles.

Precautions

STAT6 Antibody is for research use only and not for use in diagnostic or therapeutic procedures.

STAT6 Antibody - Protein Information

Name STAT6**Function**

Carries out a dual function: signal transduction and activation of transcription. Involved in IL4/interleukin-4- and IL3/interleukin-3-mediated signaling.

Cellular Location

Cytoplasm. Nucleus. Note=Translocated into the nucleus in response to phosphorylation

STAT6 Antibody - Protocols

Provided below are standard protocols that you may find useful for product applications.

- [Western Blot](#)
- [Blocking Peptides](#)
- [Dot Blot](#)
- [Immunohistochemistry](#)
- [Immunofluorescence](#)
- [Immunoprecipitation](#)
- [Flow Cytometry](#)
- [Cell Culture](#)

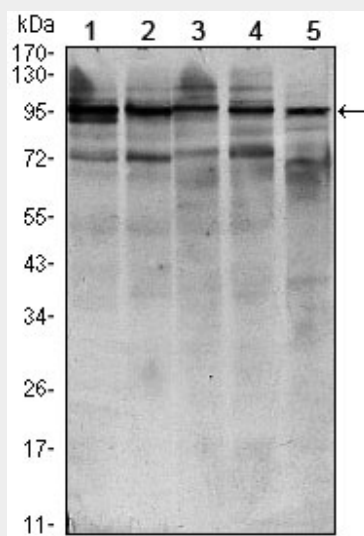
STAT6 Antibody - Images

Figure 1: Western blot analysis using STAT6 mouse mAb against HEK293 (1), NIH/3T3 (2), MCF-7 (3), Raw246.7 (4) and PC-12 (5) cell lysate.

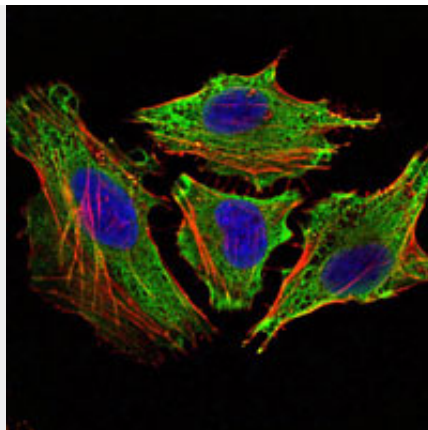


Figure 2: Immunofluorescence analysis of HeLa cells using STAT6 mouse mAb (green). Blue: DRAQ5 fluorescent DNA dye. Red: Actin filaments have been labeled with Alexa Fluor-555 phalloidin

STAT6 Antibody - References

1. *Pediatr Nephrol.* 2009 Mar;24(3):489-95.
2. *Mol Immunol.* 2009 Jun;46(10):2080-9.
3. *Am J Hum Genet.* 2009 Nov;85(5):628-42.