

**STAT5B Antibody**  
**Purified Mouse Monoclonal Antibody**  
**Catalog # AO1427a****Specification**

---

**STAT5B Antibody - Product Information**

Application	WB, E
Primary Accession	<a href="#">P51692</a>
Reactivity	Human
Host	Mouse
Clonality	Monoclonal
Isotype	IgG1
Calculated MW	90kDa KDa

**Description**

The protein encoded by this gene is a member of the STAT family of transcription factors. In response to cytokines and growth factors, STAT family members are phosphorylated by the receptor associated kinases, and then form homo- or heterodimers that translocate to the cell nucleus where they act as transcription activators. This protein mediates the signal transduction triggered by various cell ligands, such as IL2, IL4, CSF1, and different growth hormones. It has been shown to be involved in diverse biological processes, such as TCR signaling, apoptosis, adult mammary gland development, and sexual dimorphism of liver gene expression. This gene was found to fuse to retinoic acid receptor-alpha (RARA) gene in a small subset of acute promyelocytic leukemias (APLL). The dysregulation of the signaling pathways mediated by this protein may be the cause of the APLL.

**Immunogen**

Purified recombinant fragment of human STAT5B expressed in E. Coli. <br />

**Formulation**

Ascitic fluid containing 0.03% sodium azide. <br /> <br />

**STAT5B Antibody - Additional Information**

**Gene ID** 6777

**Other Names**

Signal transducer and activator of transcription 5B, STAT5B

**Dilution**

WB~~1/500 - 1/2000

E~~N/A

**Storage**

Maintain refrigerated at 2-8°C for up to 6 months. For long term storage store at -20°C in small aliquots to prevent freeze-thaw cycles.

**Precautions**

STAT5B Antibody is for research use only and not for use in diagnostic or therapeutic procedures.

## STAT5B Antibody - Protein Information

**Name** STAT5B

### Function

Carries out a dual function: signal transduction and activation of transcription (PubMed:<a href="http://www.uniprot.org/citations/29844444" target="\_blank">29844444</a>). Mediates cellular responses to the cytokine KITLG/SCF and other growth factors. Binds to the GAS element and activates PRL-induced transcription. Positively regulates hematopoietic/erythroid differentiation.

### Cellular Location

Cytoplasm. Nucleus. Note=Translocated into the nucleus in response to phosphorylation.

## STAT5B Antibody - Protocols

Provided below are standard protocols that you may find useful for product applications.

- [Western Blot](#)
- [Blocking Peptides](#)
- [Dot Blot](#)
- [Immunohistochemistry](#)
- [Immunofluorescence](#)
- [Immunoprecipitation](#)
- [Flow Cytometry](#)
- [Cell Culture](#)

## STAT5B Antibody - Images

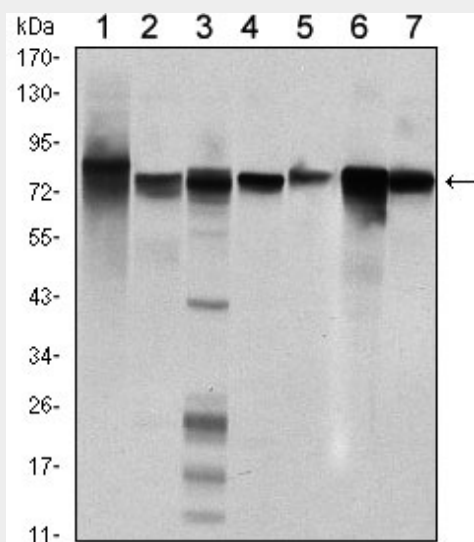


Figure 1: Western blot analysis using STAT5B mouse mAb against Hela (1), K562 (2), NIH/3T3 (3), C6 (4), HEK293 (5), Jurkat (6) and HL-60 (7) cell lysate.

## STAT5B Antibody - References

1. Mol Cancer. 2009 Aug 26;8:67.
2. Bone. 2010 Feb;46(2):524-33.