

CRTC1 Antibody
Purified Mouse Monoclonal Antibody
Catalog # AO1428a**Specification****CRTC1 Antibody - Product Information**

Application	WB, FC, ICC, E
Primary Accession	Q6UUV9
Reactivity	Human
Host	Mouse
Clonality	Monoclonal
Isotype	IgG1
Calculated MW	67kDa KDa

Description

MECT1 (also known as MucoEpidermoid Carcinoma Translocated 1) functions as a transcriptional coactivator for CREB1, which activates transcription through both consensus and variant cAMP response element (CRE) sites. MECT1 does not appear to modulate CREB1 DNA-binding activity but enhances the interaction of CREB1 with TAF4/TAFII-130. MECT1 translocates with MAML2 (MasterMind-Like Protein 2) to yield a fusion oncogene: t(11;19) (q21;p13). This translocation occurs in mucoepidermoid carcinomas, benign Warthin tumors and clear cell hidradenomas. The novel fusion product that results disrupts the Notch signaling pathway. The fusion protein consists of the N-terminus of MECT1 joined to the C-terminus of MAML2. The reciprocal fusion protein consisting of the N-terminus of MAML2 joined to the C-terminus of MECT1 has been detected in a small number of mucoepidermoid carcinomas. Multiple isoforms have been reported for the MECT1 protein. Tissue specificity: Highly expressed in adult and fetal brain. Located to specific regions such as the prefrontal cortex and cerebellum. Very low expression in other tissues such as heart, spleen, lung, skeletal muscle, salivary gland, ovary and kidney.

Immunogen

Purified recombinant fragment of human CRTC1 expressed in E. Coli.

Formulation

Ascitic fluid containing 0.03% sodium azide.

CRTC1 Antibody - Additional Information

Gene ID 23373

Other Names

CREB-regulated transcription coactivator 1, Mucoepidermoid carcinoma translocated protein 1, Transducer of regulated cAMP response element-binding protein 1, TORC-1, Transducer of CREB protein 1, CRTC1 (HGNC:16062)

Dilution

WB~~1/500 - 1/2000
FC~~1/200 - 1/400
ICC~~N/A

E~~N/A

Storage

Maintain refrigerated at 2-8°C for up to 6 months. For long term storage store at -20°C in small aliquots to prevent freeze-thaw cycles.

Precautions

CRTC1 Antibody is for research use only and not for use in diagnostic or therapeutic procedures.

CRTC1 Antibody - Protein Information

Name CRTC1 ([HGNC:16062](#))

Function

Transcriptional coactivator for CREB1 which activates transcription through both consensus and variant cAMP response element (CRE) sites. Acts as a coactivator, in the SIK/TORC signaling pathway, being active when dephosphorylated and acts independently of CREB1 'Ser-133' phosphorylation. Enhances the interaction of CREB1 with TAF4. Regulates the expression of specific CREB-activated genes such as the steroidogenic gene, StAR. Potent coactivator of PGC1alpha and inducer of mitochondrial biogenesis in muscle cells. In the hippocampus, involved in late-phase long-term potentiation (L-LTP) maintenance at the Schaffer collateral-CA1 synapses. May be required for dendritic growth of developing cortical neurons (By similarity). In concert with SIK1, regulates the light-induced entrainment of the circadian clock. In response to light stimulus, coactivates the CREB-mediated transcription of PER1 which plays an important role in the photic entrainment of the circadian clock.

Cellular Location

Cytoplasm. Nucleus. Note=Cytoplasmic when phosphorylated by SIK or AMPK and when sequestered by 14-3-3 proteins (PubMed:16817901) Translocated to the nucleus on Ser-151 dephosphorylation, instigated by a number of factors including calcium ion and cAMP levels (PubMed:15589160). Light stimulation triggers a nuclear accumulation in the suprachiasmatic nucleus (SCN) of the brain (By similarity) {ECO:0000250|UniProtKB:Q68ED7, ECO:0000269|PubMed:15589160, ECO:0000269|PubMed:16817901}

Tissue Location

Highly expressed in adult and fetal brain. Located to specific regions such as the prefrontal cortex and cerebellum. Very low expression in other tissues such as heart, spleen, lung, skeletal muscle, salivary gland, ovary and kidney.

CRTC1 Antibody - Protocols

Provided below are standard protocols that you may find useful for product applications.

- [Western Blot](#)
- [Blocking Peptides](#)
- [Dot Blot](#)
- [Immunohistochemistry](#)
- [Immunofluorescence](#)
- [Immunoprecipitation](#)
- [Flow Cytometry](#)
- [Cell Culture](#)

CRTC1 Antibody - Images

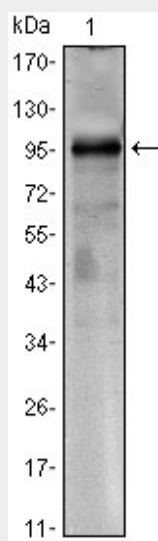


Figure 1: Western blot analysis using CRTCl mouse mAb against CRTCl(AA: 1-353)-hlgGfC transfected HEK293 cell lysate.

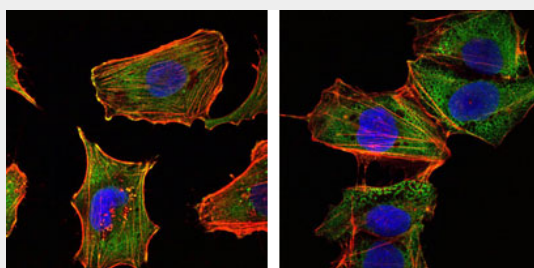


Figure 2: Immunofluorescence analysis of U251 (left) and NTERA2 (right) cells using CRTCl mAb (green). Red: Actin filaments have been labeled with DY-554 phalloidin. Blue: DRAQ5 fluorescent DNA dye.

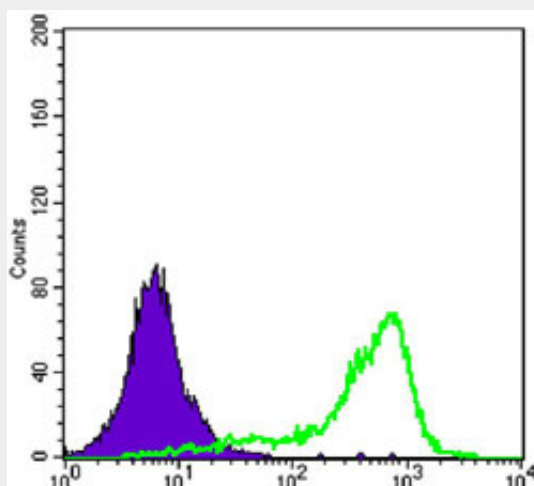


Figure 3: Flow cytometric analysis of K562 cells using CRTCl mouse mAb (green) and negative control (purple).

CRTCl Antibody - References

1. Genes Chromosomes Cancer. 2007 Jun;46(6):559-63.
2. Cancer Genet Cytogenet. 2008 Jan 15;180(2):135-9.
3. Biosci Rep. 2009 Apr;29(2):77-87.