

KLHL1 Antibody
Purified Mouse Monoclonal Antibody
Catalog # AO1462a**Specification**

KLHL1 Antibody - Product Information

Application	WB, IF
Primary Accession	Q9NR64
Reactivity	Human
Host	Mouse
Clonality	Monoclonal
Isotype	IgG1
Calculated MW	82kDa KDa

Description

The mammalian Kelch like 1 (KLHL1) was initially discovered as a homolog to the Drosophila Kelch gene that is highly expressed in several brain tissues. The predicted protein domain structure of KLHL1 is characteristic of a number of proteins that bind actin, form dimers, and often act as actin organizing proteins. Based on the presence of anti sense RNA that spans the transcription and translation start sites as well as the first splice site of KLHL1 in brain tissue of individuals suffering from the neurodegenerative disorder spinocerebellar ataxia type 8 (SCA8), it has been suggested that KLHL1 is involved in this disease and that regulation of KLHL1 protein may be affected by antisense RNA expression. Tissue specificity: Highly expressed in brain.

Immunogen

Purified recombinant fragment of human KLHL1 expressed in E. Coli.

Formulation

Ascitic fluid containing 0.03% sodium azide.

KLHL1 Antibody - Additional Information

Gene ID 57626

Other Names

Kelch-like protein 1, KLHL1, KIAA1490

Dilution

WB~~1/500 - 1/2000

IF~~1/200 - 1/1000

Storage

Maintain refrigerated at 2-8°C for up to 6 months. For long term storage store at -20°C in small aliquots to prevent freeze-thaw cycles.

Precautions

KLHL1 Antibody is for research use only and not for use in diagnostic or therapeutic procedures.

KLHL1 Antibody - Protein Information

Name KLHL1

Synonyms KIAA1490

Function

May play a role in organizing the actin cytoskeleton of the brain cells.

Cellular Location

Cytoplasm, cytoskeleton.

Tissue Location

Highly expressed in brain.

KLHL1 Antibody - Protocols

Provided below are standard protocols that you may find useful for product applications.

- [Western Blot](#)
- [Blocking Peptides](#)
- [Dot Blot](#)
- [Immunohistochemistry](#)
- [Immunofluorescence](#)
- [Immunoprecipitation](#)
- [Flow Cytometry](#)
- [Cell Culture](#)

KLHL1 Antibody - Images

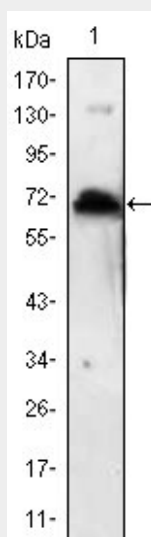


Figure 1: Western blot analysis using KLHL1 mAb against human KLHL1 (AA: 202-506) recombinant protein. (Expected MW is 60.2 kDa)

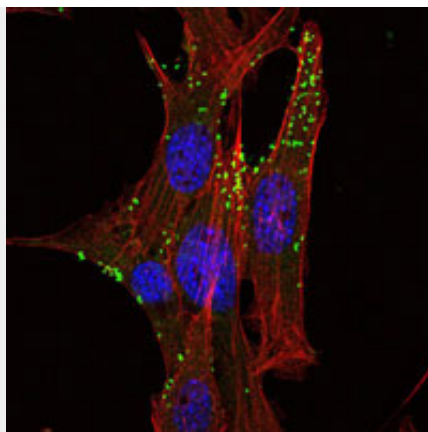


Figure 2: Immunofluorescence analysis of NIH/3T3 cells using KLHL1 mouse mAb (green). Red: Actin filaments have been labeled with Alexa Fluor-555 phalloidin.

KLHL1 Antibody - References

1. DNA Res. 2000 Apr 28;7(2):143-50.
2. Nat Genet. 2004 Jan;36(1):40-5.
3. Science. 2005 Mar 11;307(5715):1621-5.