

**MATN1 Antibody**  
**Purified Mouse Monoclonal Antibody**  
**Catalog # AO1466a****Specification**

---

**MATN1 Antibody - Product Information**

Application	WB, ICC, E
Primary Accession	<a href="#">Q00266</a>
Reactivity	Human
Host	Mouse
Clonality	Monoclonal
Isotype	IgG1
Calculated MW	54kDa KDa

**Description**

This gene catalyzes a two-step reaction that involves the transfer of the adenosyl moiety of ATP to methionine to form S-adenosylmethionine and triphosphosphate, which is subsequently cleaved to PPi and Pi. S-adenosylmethionine is the source of methyl groups for most biological methylations. The encoded protein is found as a homotetramer (MAT I) or a homodimer (MAT III) whereas a third form, MAT II (gamma), is encoded by the MAT2A gene. Mutations in this gene are associated with methionine adenosyltransferase deficiency.

**Immunogen**

Purified recombinant fragment of human MATN1 expressed in E. Coli.

**Formulation**

Ascitic fluid containing 0.03% sodium azide.

**MATN1 Antibody - Additional Information**

**Gene ID** 4143

**Other Names**

S-adenosylmethionine synthase isoform type-1, AdoMet synthase 1, 2.5.1.6, Methionine adenosyltransferase 1, MAT 1, Methionine adenosyltransferase I/III, MAT-I/III, MAT1A, AMS1, MATA1

**Dilution**

WB~~1/500 - 1/2000

ICC~~N/A

E~~N/A

**Storage**

Maintain refrigerated at 2-8°C for up to 6 months. For long term storage store at -20°C in small aliquots to prevent freeze-thaw cycles.

**Precautions**

MATN1 Antibody is for research use only and not for use in diagnostic or therapeutic procedures.

**MATN1 Antibody - Protein Information**

**Name** MAT1A

**Synonyms** AMS1, MATA1

**Function**

Catalyzes the formation of S-adenosylmethionine from methionine and ATP. The reaction comprises two steps that are both catalyzed by the same enzyme: formation of S-adenosylmethionine (AdoMet) and triphosphate, and subsequent hydrolysis of the triphosphate.

**Tissue Location**

Expressed in liver..

**MATN1 Antibody - Protocols**

Provided below are standard protocols that you may find useful for product applications.

- [Western Blot](#)
- [Blocking Peptides](#)
- [Dot Blot](#)
- [Immunohistochemistry](#)
- [Immunofluorescence](#)
- [Immunoprecipitation](#)

- [Flow Cytometry](#)

- [Cell Culture](#)

**MATN1 Antibody - Images**

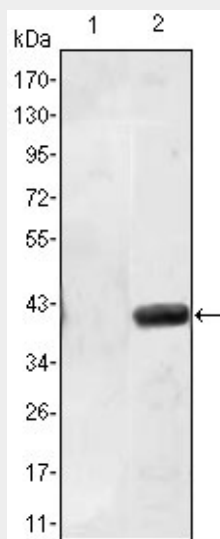


Figure 1: Western blot analysis using MATN1 mAb against HEK293 (1) and MATN1(AA:427-496)-hlgGfC transfected HEK293 (2) cell lysate.

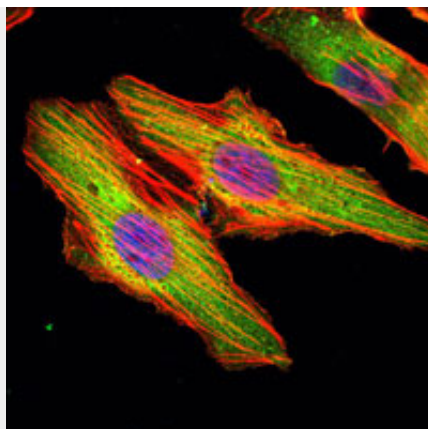


Figure 2: Immunofluorescence analysis of HeLa cells using MATN1 mouse mAb (green). Blue: DRAQ5 fluorescent DNA dye. Red: Actin filaments have been labeled with Alexa Fluor-555 phalloidin.

#### **MATN1 Antibody - References**

1. Biochem J. 1993 Jul 15;293 ( Pt 2):481-6.
2. Am J Hum Genet. 1997 Mar;60(3):540-6.
3. Am J Hum Genet. 2000 Feb;66(2):347-55.