

PAX8 Antibody
Purified Mouse Monoclonal Antibody
Catalog # AO1470a**Specification**

PAX8 Antibody - Product Information

Application	WB, E
Primary Accession	Q71U36
Reactivity	Human
Host	Mouse
Clonality	Monoclonal
Isotype	IgG1
Calculated MW	60kDa KDa

Description

This gene encodes a member of the paired box (PAX) family of transcription factors. Members of this gene family typically encode proteins that contain a paired box domain, an octapeptide, and a paired-type homeodomain. This nuclear protein is involved in thyroid follicular cell development and expression of thyroid-specific genes. Mutations in this gene have been associated with thyroid dysgenesis, thyroid follicular carcinomas and atypical follicular thyroid adenomas. Tissue specificity: Expressed in the excretory system, thyroid gland and Wilms tumors. ABCAM: This protein is a member of the paired box (PAX) family of transcription factors, typically containing a paired box domain, an octapeptide, and a paired-type homeodomain. This family plays critical roles during fetal development and cancer growth. The specific function of the PAX8 is unknown but it may involve kidney cell differentiation, thyroid development, or thyroid dysgenesis. Alternative splicing in the gene by inclusion or exclusion of exons 7 and/or 8 has produced several known products but the biological significance of the variants is unknown. Several other splice variants have been proposed but the full nature of these products has not been described. Pax8 is also a marker of otic progenitor cells.

Immunogen

Purified recombinant fragment of human PAX8 expressed in E. Coli.

Formulation

Ascitic fluid containing 0.03% sodium azide.

PAX8 Antibody - Additional Information

Gene ID 7846

Other Names

Tubulin alpha-1A chain, Alpha-tubulin 3, Tubulin B-alpha-1, Tubulin alpha-3 chain, TUBA1A, TUBA3

Dilution

WB~~1/500 - 1/2000

E~~N/A

Storage

Maintain refrigerated at 2-8°C for up to 6 months. For long term storage store at -20°C in small aliquots to prevent freeze-thaw cycles.

Precautions

PAX8 Antibody is for research use only and not for use in diagnostic or therapeutic procedures.

PAX8 Antibody - Protein Information

Name TUBA1A

Synonyms TUBA3

Function

Tubulin is the major constituent of microtubules, a cylinder consisting of laterally associated linear protofilaments composed of alpha- and beta-tubulin heterodimers. Microtubules grow by the addition of GTP-tubulin dimers to the microtubule end, where a stabilizing cap forms. Below the cap, tubulin dimers are in GDP-bound state, owing to GTPase activity of alpha-tubulin.

Cellular Location

Cytoplasm, cytoskeleton. Cytoplasm, cytoskeleton, flagellum axoneme
{ECO:0000250|UniProtKB:P68369}

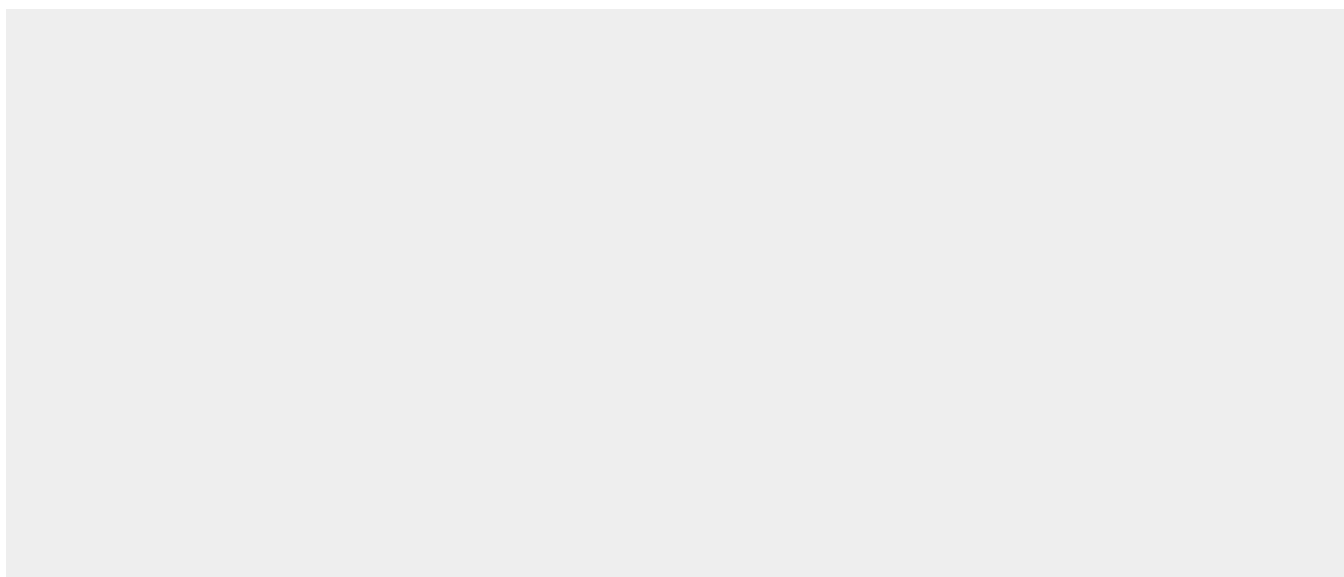
Tissue Location

Expressed at a high level in fetal brain.

PAX8 Antibody - Protocols

Provided below are standard protocols that you may find useful for product applications.

- [Western Blot](#)
- [Blocking Peptides](#)
- [Dot Blot](#)
- [Immunohistochemistry](#)
- [Immunofluorescence](#)
- [Immunoprecipitation](#)
- [Flow Cytometry](#)
- [Cell Culture](#)

PAX8 Antibody - Images

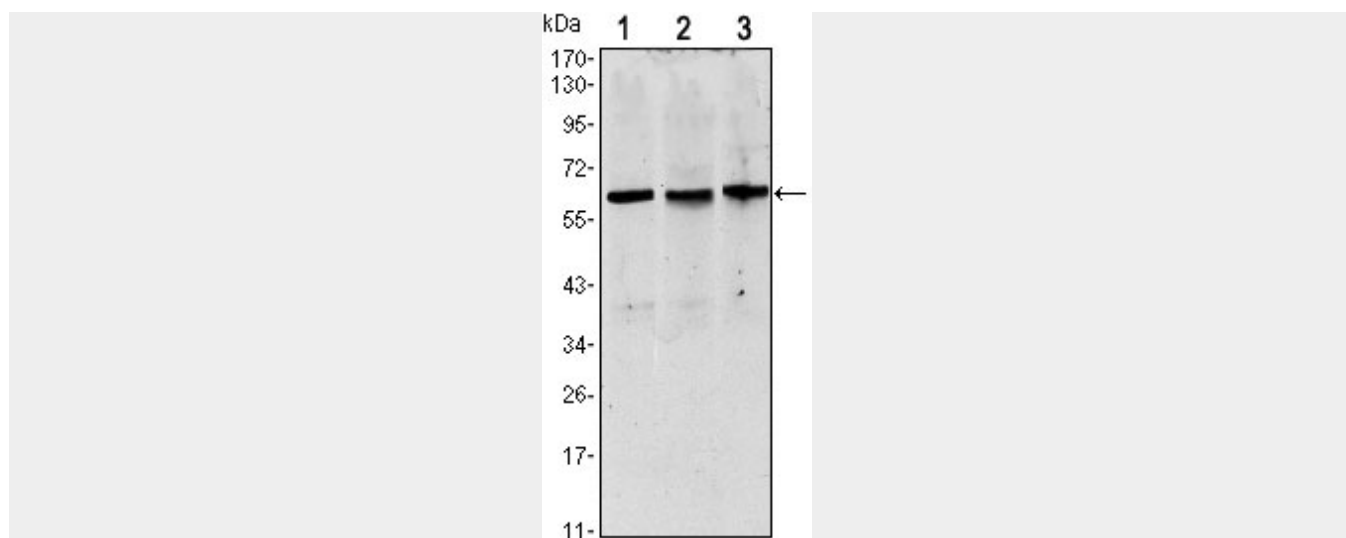


Figure 1: Western blot analysis using PAX8 mouse mAb against HeLa (1) HEK293 (2) and Raji (3) cell lysate.

PAX8 Antibody - References

1. Thyroid. 2009 Jan;19(1):61-8. 2. Cancer Genet Cytogenet. 2010 Jan 1;196(1):7-13. 3. Cancer Cytopathol. 2010 Oct 25;118(5):298-302.