

**SCGB2A2 Antibody**  
**Purified Mouse Monoclonal Antibody**  
**Catalog # AO1478a****Specification**

---

**SCGB2A2 Antibody - Product Information**

Application	WB, IHC, FC, ICC, E
Primary Accession	<a href="#">Q13296</a>
Reactivity	Human
Host	Mouse
Clonality	Monoclonal
Isotype	IgG1
Calculated MW	11kDa KDa

**Description**

Mammaglobin is a gene that is expressed almost exclusively in the normal breast epithelium and human breast cancer. It is a member of the secretoglobulin gene family and forms a heterodimer with lipophilin B. It has been suggested that mammaglobin may be a useful marker for breast cancer clinical research. Studies investigating the detection of mRNA by RT PCR from circulating carcinoma cells in the peripheral blood of breast cancer patients have shown that mammaglobin is a highly specific marker and correlates with several prognostic factors, such as lymph node involvement. Tissue specificity: Mammary gland specific. Over-expressed in breast cancer.

**Immunogen**

Purified recombinant fragment of human SCGB2A2 expressed in E. Coli. <br />

**Formulation**

Ascitic fluid containing 0.03% sodium azide.

**SCGB2A2 Antibody - Additional Information**

**Gene ID** 4250

**Other Names**

Mammaglobin-A, Mammaglobin-1, Secretoglobulin family 2A member 2, SCGB2A2, MGB1, UGB2

**Dilution**

WB~~1/500 - 1/2000

IHC~~1/200 - 1/1000

FC~~1/200 - 1/400

ICC~~N/A

E~~N/A

**Storage**

Maintain refrigerated at 2-8°C for up to 6 months. For long term storage store at -20°C in small aliquots to prevent freeze-thaw cycles.

**Precautions**

SCGB2A2 Antibody is for research use only and not for use in diagnostic or therapeutic procedures.

## SCGB2A2 Antibody - Protein Information

**Name** SCGB2A2

**Synonyms** MGB1, UGB2

**Cellular Location**

Secreted.

**Tissue Location**

Mammary gland specific. Over-expressed in breast cancer

## SCGB2A2 Antibody - Protocols

Provided below are standard protocols that you may find useful for product applications.

- [Western Blot](#)
- [Blocking Peptides](#)
- [Dot Blot](#)
- [Immunohistochemistry](#)
- [Immunofluorescence](#)
- [Immunoprecipitation](#)
- [Flow Cytometry](#)
- [Cell Culture](#)

## SCGB2A2 Antibody - Images

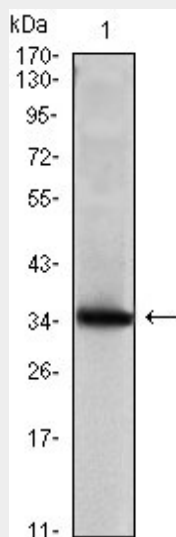


Figure 1: Western blot analysis using SCGB2A2 mAb against human SCGB2A2 (AA: 2-93) recombinant protein. (Expected MW is 35.8 kDa)

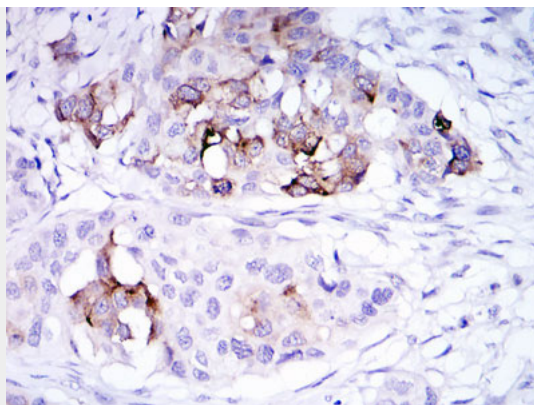


Figure 2: Immunohistochemical analysis of paraffin-embedded mammary cancer tissues using SCGB2A2 mouse mAb with DAB staining.

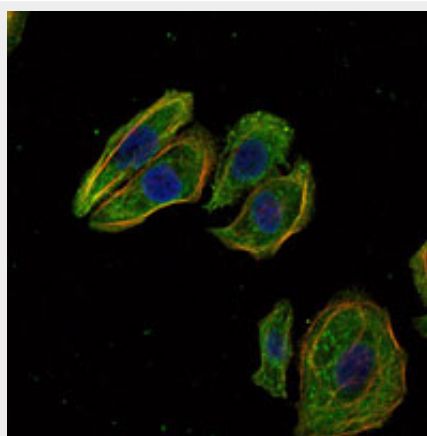


Figure 3: Immunofluorescence analysis of Hela cells using SCGB2A2 mouse mAb (green). Blue: DRAQ5 fluorescent DNA dye. Red: Actin filaments have been labeled with Alexa Fluor-555 phalloidin.

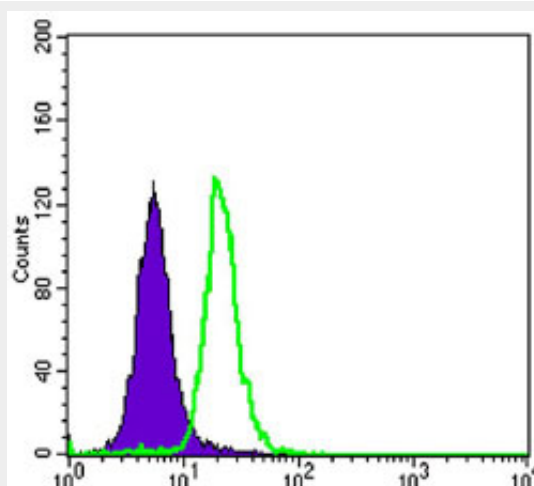


Figure 4: Flow cytometric analysis of SK-BR-3 cells using SCGB2A2 mouse mAb (green) and negative control (purple).

#### SCGB2A2 Antibody - References

1. Ann Oncol. 2006 Jun;17 Suppl 7:vii41-5.
2. Mod Pathol. 2007 Feb;20(2):208-14.