

CDKN1C Antibody
Purified Mouse Monoclonal Antibody
Catalog # AO1482a**Specification**

CDKN1C Antibody - Product Information

Application	WB, E
Primary Accession	P49918
Reactivity	Human
Host	Mouse
Clonality	Monoclonal
Isotype	IgG1
Calculated MW	57kDa KDa

Description

The protein encoded by this gene is a tight-binding, strong inhibitor of several G1 cyclin/Cdk complexes and a negative regulator of cell proliferation. Mutations in this gene are implicated in sporadic cancers and Beckwith-Wiedemann syndrome, suggesting that this gene is a tumor suppressor candidate. Three transcript variants encoding two different isoforms have been found for this gene. Tissue specificity: Expressed in the heart, brain, lung, skeletal muscle, kidney, pancreas and testis. High levels are seen in the placenta while low levels are seen in the liver.

Immunogen

Purified recombinant fragment of human CDKN1C expressed in E. Coli.

Formulation

Ascitic fluid containing 0.03% sodium azide.

CDKN1C Antibody - Additional Information

Gene ID 1028

Other Names

Cyclin-dependent kinase inhibitor 1C, Cyclin-dependent kinase inhibitor p57, p57Kip2, CDKN1C, KIP2

Dilution

WB~~1/500 - 1/2000

E~~N/A

Storage

Maintain refrigerated at 2-8°C for up to 6 months. For long term storage store at -20°C in small aliquots to prevent freeze-thaw cycles.

Precautions

CDKN1C Antibody is for research use only and not for use in diagnostic or therapeutic procedures.

CDKN1C Antibody - Protein Information

Name CDKN1C

Synonyms KIP2

Function

Potent tight-binding inhibitor of several G1 cyclin/CDK complexes (cyclin E-CDK2, cyclin D2-CDK4, and cyclin A-CDK2) and, to lesser extent, of the mitotic cyclin B-CDC2. Negative regulator of cell proliferation. May play a role in maintenance of the non-proliferative state throughout life.

Cellular Location

Nucleus.

Tissue Location

Expressed in the heart, brain, lung, skeletal muscle, kidney, pancreas and testis. Expressed in the eye. High levels are seen in the placenta while low levels are seen in the liver

CDKN1C Antibody - Protocols

Provided below are standard protocols that you may find useful for product applications.

- [Western Blot](#)
- [Blocking Peptides](#)
- [Dot Blot](#)
- [Immunohistochemistry](#)
- [Immunofluorescence](#)
- [Immunoprecipitation](#)
- [Flow Cytometry](#)
- [Cell Culture](#)

CDKN1C Antibody - Images

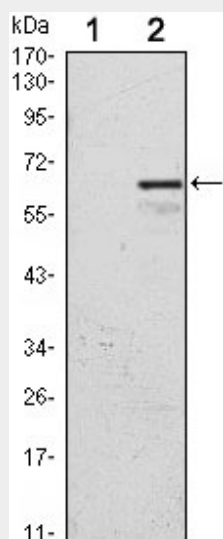


Figure 1: Western blot analysis using CDKN1C mAb against HEK293 (1) and CDKN1C(AA: 214-316)-hlgGfC transfected HEK293 (2) cell lysate.

CDKN1C Antibody - References

1. Cell Cycle. 2007 Mar 1;6(5):620-5.
2. Oncogene. 2008 Sep 25;27(43):5651-61.