

**PAX4 Antibody**  
**Purified Mouse Monoclonal Antibody**  
**Catalog # AO1507a****Specification****PAX4 Antibody - Product Information**

Application	<b>E, WB</b>
Primary Accession	<a href="#">O43316</a>
Reactivity	<b>Human</b>
Host	<b>Mouse</b>
Clonality	<b>Monoclonal</b>
Isotype	<b>IgG1</b>
Calculated MW	<b>38kDa KDa</b>

**Description**

This gene is a member of the paired box (PAX) family of transcription factors. Members of this gene family typically contain a paired box domain, an octapeptide, and a paired-type homeodomain. These genes play critical roles during fetal development and cancer growth. The paired box 4 gene is involved in pancreatic islet development and mouse studies have demonstrated a role for this gene in differentiation of insulin-producing beta cells.

**Immunogen**

Purified recombinant fragment of human PAX4 expressed in E. Coli.

**Formulation**

Ascitic fluid containing 0.03% sodium azide.

**PAX4 Antibody - Additional Information****Other Names**

Paired box protein Pax-4, PAX4

**Dilution**

E~~1/10000

WB~~1/500 - 1/2000

**Storage**

Maintain refrigerated at 2-8°C for up to 6 months. For long term storage store at -20°C in small aliquots to prevent freeze-thaw cycles.

**Precautions**

PAX4 Antibody is for research use only and not for use in diagnostic or therapeutic procedures.

**PAX4 Antibody - Protein Information**

**Name** PAX4

**Function**

Plays an important role in the differentiation and development of pancreatic islet beta cells. Transcriptional repressor that binds to a common element in the glucagon, insulin and somatostatin promoters. Competes with PAX6 for this same promoter binding site. Isoform 2 appears to be a dominant negative form antagonizing PAX4 transcriptional activity.

#### Cellular Location

Nucleus.

#### PAX4 Antibody - Protocols

Provided below are standard protocols that you may find useful for product applications.

- [Western Blot](#)
- [Blocking Peptides](#)
- [Dot Blot](#)
- [Immunohistochemistry](#)
- [Immunofluorescence](#)
- [Immunoprecipitation](#)
- [Flow Cytometry](#)
- [Cell Culture](#)

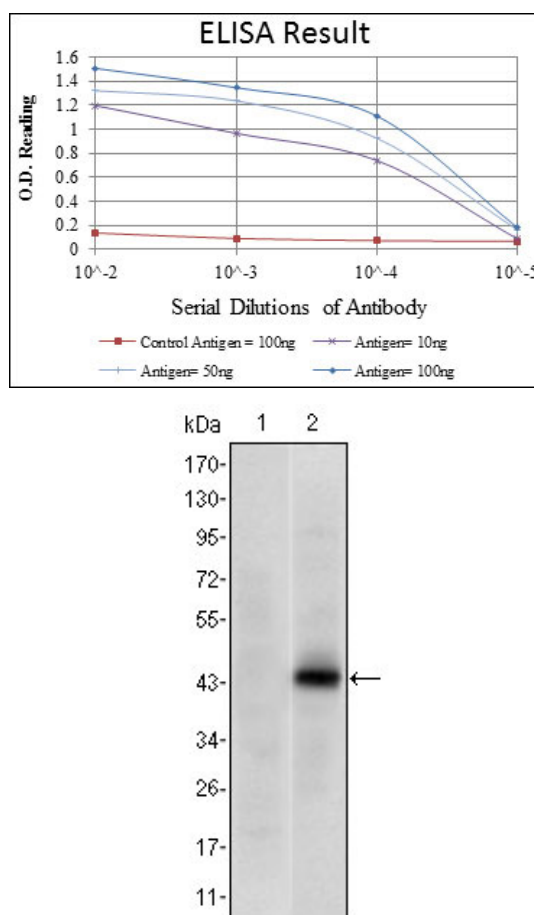


Figure 1: Western blot analysis using PAX4 mAb against HEK293 (1) and PAX4(AA: 105-232)-hIgGFc transfected HEK293 (2) cell lysate.

#### **PAX4 Antibody - References**

1. PLoS One. 2008 Mar 12;3(3):e1783.
2. Diabetes Res Clin Pract. 2008 Sep;81(3):365-9.