

MSI2 Antibody
Purified Mouse Monoclonal Antibody
Catalog # AO1530a**Specification****MSI2 Antibody - Product Information**

Application	WB, IHC, E
Primary Accession	Q96DH6
Reactivity	Human
Host	Mouse
Clonality	Monoclonal
Isotype	IgG1
Calculated MW	35kDa KDa

Description

Msi2 (musashi homolog 2), also known as MSI2H, is a 328 amino acid protein that localizes to the cytoplasm and contains two RRM (RNA recognition motif) domains. Expressed ubiquitously at low levels, Msi2 functions as an RNA binding protein that, by regulating the expression of target mRNAs, is thought to play a role in the proliferation and maintenance of stem cells within the central nervous system. Msi2 is subject to posttranslational phosphorylation and is upregulated in response to brain injury, suggesting a role in healing and brain tissue regeneration. Chromosomal aberrations involving the Msi2 gene are associated with the progression of chronic myeloid leukemia. Multiple isoforms of Msi2 exist due to alternative splicing events. Tissue specificity: Ubiquitous; detected at low levels.

Immunogen

Purified recombinant fragment of human MSI2 expressed in E. Coli.

Formulation

Ascitic fluid containing 0.03% sodium azide.

MSI2 Antibody - Additional Information

Gene ID 124540

Other Names

RNA-binding protein Musashi homolog 2, Musashi-2, MSI2

Dilution

WB~~1/500 - 1/2000

IHC~~1/500 - 1/2000

E~~1/10000

Storage

Maintain refrigerated at 2-8°C for up to 6 months. For long term storage store at -20°C in small aliquots to prevent freeze-thaw cycles.

Precautions

MSI2 Antibody is for research use only and not for use in diagnostic or therapeutic procedures.

MSI2 Antibody - Protein Information

Name MSI2

Function

RNA binding protein that regulates the expression of target mRNAs at the translation level. May play a role in the proliferation and maintenance of stem cells in the central nervous system (By similarity).

Cellular Location

Cytoplasm. Note=Associated with polysomes.

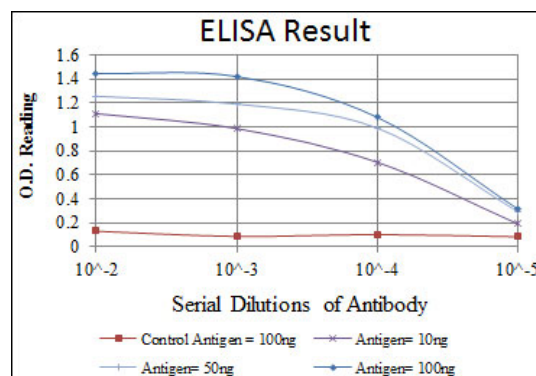
Tissue Location

Ubiquitous; detected at low levels.

MSI2 Antibody - Protocols

Provided below are standard protocols that you may find useful for product applications.

- [Western Blot](#)
- [Blocking Peptides](#)
- [Dot Blot](#)
- [Immunohistochemistry](#)
- [Immunofluorescence](#)
- [Immunoprecipitation](#)
- [Flow Cytometry](#)
- [Cell Culture](#)



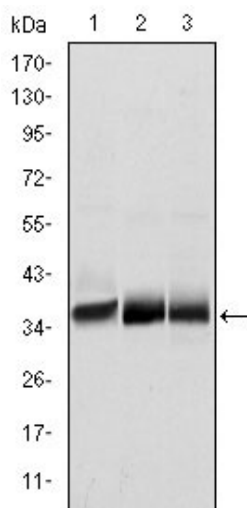


Figure 1: Western blot analysis using MSI2 mouse mAb against NTERA-2 (1), SW620 (2) and T47D (3) cell lysate.

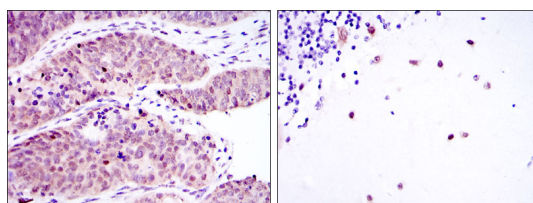


Figure 2: Immunohistochemical analysis of paraffin-embedded ovarian cancer (left) and cerebellum tissues (right) using MSI2 mouse mAb with DAB staining.

MSI2 Antibody - References

1. Am J Hum Genet. 2009 Nov;85(5):628-42.
2. Haematologica. 2008 Dec;93(12):1903-7.