

**CTTN Antibody**  
**Purified Mouse Monoclonal Antibody**  
**Catalog # AO1539a****Specification****CTTN Antibody - Product Information**

Application	WB, IHC, E
Primary Accession	<a href="#">Q14247</a>
Reactivity	Human, Mouse
Host	Mouse
Clonality	Monoclonal
Isotype	IgG1
Calculated MW	80kDa KDa

**Description**

This gene is overexpressed in breast cancer and squamous cell carcinomas of the head and neck. The encoded protein is localized in the cytoplasm and in areas of the cell-substratum contacts. This gene has two roles: (1) regulating the interactions between components of adherens-type junctions and (2) organizing the cytoskeleton and cell adhesion structures of epithelia and carcinoma cells. During apoptosis, the encoded protein is degraded in a caspase-dependent manner. The aberrant regulation of this gene contributes to tumor cell invasion and metastasis. Three splice variants that encode different isoforms have been identified for this gene. (provided by RefSeq)

**Immunogen**

Purified recombinant fragment of human CTTN expressed in E. Coli. <br />

**Formulation**

Ascitic fluid containing 0.03% sodium azide.

**CTTN Antibody - Additional Information****Gene ID** 2017**Other Names**

Src substrate cortactin, Amplaxin, Oncogene EMS1, CTTN, EMS1

**Dilution**

WB~~1/500 - 1/2000

IHC~~1/500 - 1/2000

E~~1/10000

**Storage**

Maintain refrigerated at 2-8°C for up to 6 months. For long term storage store at -20°C in small aliquots to prevent freeze-thaw cycles.

**Precautions**

CTTN Antibody is for research use only and not for use in diagnostic or therapeutic procedures.

## CTTN Antibody - Protein Information

**Name** CTTN

**Synonyms** EMS1

### Function

Contributes to the organization of the actin cytoskeleton and cell shape (PubMed:<a href="http://www.uniprot.org/citations/21296879" target="\_blank">21296879</a>). Plays a role in the formation of lamellipodia and in cell migration. Plays a role in the regulation of neuron morphology, axon growth and formation of neuronal growth cones (By similarity). Through its interaction with CTTNBP2, involved in the regulation of neuronal spine density (By similarity). Plays a role in focal adhesion assembly and turnover (By similarity). In complex with ABL1 and MYLK regulates cortical actin-based cytoskeletal rearrangement critical to sphingosine 1-phosphate (S1P)-mediated endothelial cell (EC) barrier enhancement (PubMed:<a href="http://www.uniprot.org/citations/20861316" target="\_blank">20861316</a>). Plays a role in intracellular protein transport and endocytosis, and in modulating the levels of potassium channels present at the cell membrane (PubMed:<a href="http://www.uniprot.org/citations/17959782" target="\_blank">17959782</a>). Plays a role in receptor-mediated endocytosis via clathrin-coated pits (By similarity). Required for stabilization of KCNH1 channels at the cell membrane (PubMed:<a href="http://www.uniprot.org/citations/23144454" target="\_blank">23144454</a>). Plays a role in the invasiveness of cancer cells, and the formation of metastases (PubMed:<a href="http://www.uniprot.org/citations/16636290" target="\_blank">16636290</a>).

### Cellular Location

Cytoplasm, cytoskeleton. Cell projection, lamellipodium. Cell projection, ruffle. Cell projection, dendrite. Cell projection {ECO:0000250|UniProtKB:Q66HL2}. Cell membrane; Peripheral membrane protein; Cytoplasmic side. Cell projection, podosome {ECO:0000250|UniProtKB:Q01406}. Cell junction {ECO:0000250|UniProtKB:Q66HL2}. Cell junction, focal adhesion {ECO:0000250|UniProtKB:Q66HL2}. Membrane, clathrin-coated pit {ECO:0000250|UniProtKB:Q66HL2}. Cell projection, dendritic spine. Cytoplasm, cell cortex Endoplasmic reticulum {ECO:0000250|UniProtKB:Q01406}. Note=Colocalizes transiently with PTK2/FAK1 at focal adhesions (By similarity) Associated with membrane ruffles and lamellipodia. In the presence of CTTNBP2NL, colocalizes with stress fibers (By similarity). In the presence of CTTNBP2, localizes at the cell cortex (By similarity). In response to neuronal activation by glutamate, redistributes from dendritic spines to the dendritic shaft (By similarity). Colocalizes with DNM2 at the basis of filopodia in hippocampus neuron growth zones (By similarity). {ECO:0000250|UniProtKB:Q60598, ECO:0000250|UniProtKB:Q66HL2}

## CTTN Antibody - Protocols

Provided below are standard protocols that you may find useful for product applications.

- [Western Blot](#)
- [Blocking Peptides](#)
- [Dot Blot](#)
- [Immunohistochemistry](#)
- [Immunofluorescence](#)
- [Immunoprecipitation](#)
- [Flow Cytometry](#)
- [Cell Culture](#)

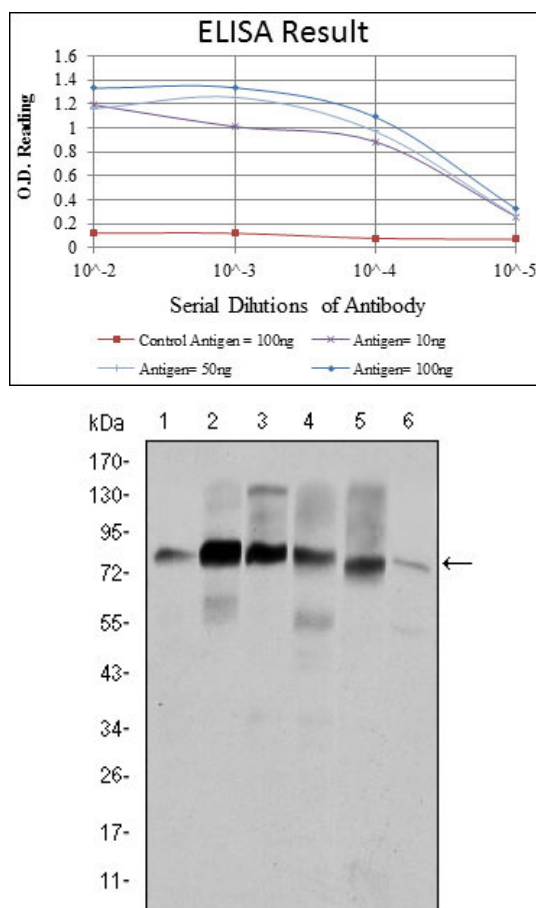


Figure 1: Western blot analysis using CTTN mouse mAb against Hela (1), A431 (2), MCF-7 (3), SR-BR-3 (4), HepG2 (5) and NIH/3T3 (6) cell lysate.

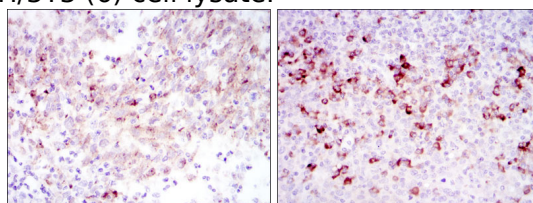


Figure 2: Immunohistochemical analysis of paraffin-embedded cervical cancer tissues (left) and tonsil tissues (right) using CTTN mouse mAb with DAB staining.

## CTTN Antibody - References

1. Ai Zheng. 2008 Mar;27(3):323-6.
2. Dis Markers. 2008;25(1):17-26.