

**MAP3K2 Antibody**  
**Purified Mouse Monoclonal Antibody**  
**Catalog # AO1623a****Specification****MAP3K2 Antibody - Product Information**

Application	WB, ICC, E
Primary Accession	<a href="#">O9Y2U5</a>
Reactivity	Human
Host	Mouse
Clonality	Monoclonal
Isotype	IgG1
Calculated MW	70kDa KDa

**Description**

The protein encoded by this gene is a member of serine/threonine protein kinase family. This kinase preferentially activates other kinases involved in the MAP kinase signaling pathway. This kinase has been shown to directly phosphorylate and activate I $\kappa$ B kinases, and thus plays a role in NF- $\kappa$ B signaling pathway. This kinase has also been found to bind and activate protein kinase C-related kinase 2, which suggests its involvement in a regulated signaling process.

**Immunogen**

Purified recombinant fragment of human MAP3K2 expressed in E. Coli. <br />

**Formulation**

Ascitic fluid containing 0.03% sodium azide.

**MAP3K2 Antibody - Additional Information**

**Gene ID** 10746

**Other Names**

Mitogen-activated protein kinase kinase kinase 2, 2.7.11.25, MAPK/ERK kinase kinase 2, MEK kinase 2, MEKK 2, MAP3K2, MAPKKK2, MEKK2

**Dilution**

WB~~1/500 - 1/2000

ICC~~N/A

E~~1/10000

**Storage**

Maintain refrigerated at 2-8°C for up to 6 months. For long term storage store at -20°C in small aliquots to prevent freeze-thaw cycles.

**Precautions**

MAP3K2 Antibody is for research use only and not for use in diagnostic or therapeutic procedures.

**MAP3K2 Antibody - Protein Information**

**Name** MAP3K2

**Synonyms** MAPKKK2, MEKK2

**Function**

Component of a protein kinase signal transduction cascade. Regulates the JNK and ERK5 pathways by phosphorylating and activating MAP2K5 and MAP2K7 (By similarity). Plays a role in caveolae kiss-and- run dynamics.

**Cellular Location**

Cytoplasm. Nucleus. Note=Upon EGF stimulation, translocates into the nucleus

**MAP3K2 Antibody - Protocols**

Provided below are standard protocols that you may find useful for product applications.

- [Western Blot](#)
- [Blocking Peptides](#)
- [Dot Blot](#)
- [Immunohistochemistry](#)
- [Immunofluorescence](#)
- [Immunoprecipitation](#)
- [Flow Cytometry](#)
- [Cell Culture](#)

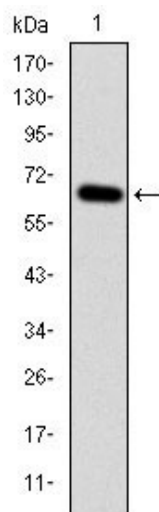
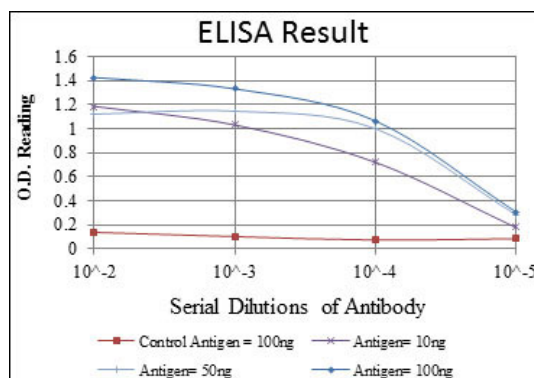


Figure 1: Western blot analysis using MAP3K2 mAb against human MAP3K2 (AA: 148-359) recombinant protein. (Expected MW is 49.2 kDa)

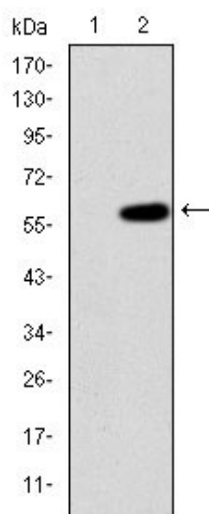


Figure 2: Western blot analysis using MAP3K2 mAb against HEK293 (1) and MAP3K2(AA: 148-359)--hIgGfc transfected HEK293 (2) cell lysate.

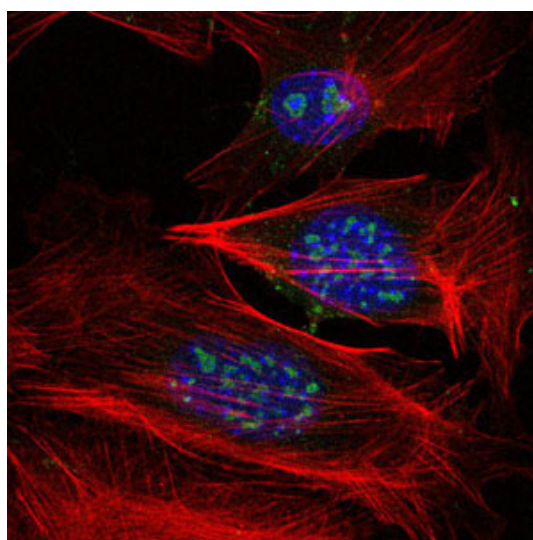


Figure 3: Immunofluorescence analysis of 3T3-L1 cells using MAP3K2 mouse mAb (green). Blue: DRAQ5 fluorescent DNA dye. Red: Actin filaments have been labeled with Alexa Fluor-555 phalloidin.

### MAP3K2 Antibody - References

1. Clin Cancer Res. 2009 Sep 1;15(17):5541-51.
2. J Biol Chem. 2009 May 15;284(20):13533-41.