

LPlunc1 Antibody
Purified Mouse Monoclonal Antibody
Catalog # AO1652a**Specification****LPlunc1 Antibody - Product Information**

Application	E, WB, IHC, IF, FC
Primary Accession	Q8TDL5
Reactivity	Human
Host	Mouse
Clonality	Monoclonal
Isotype	IgG1
Calculated MW	52kDa KDa

Description

The protein encoded by this gene may be involved in the innate immune response to bacterial exposure in the mouth, nasal cavities, and lungs. The encoded protein is secreted and is a member of the BPI/LBP/PLUNC protein superfamily. This gene is found with other members of the superfamily in a cluster on chromosome 20.

Immunogen

Purified recombinant fragment of human LPlunc1 expressed in E. Coli.

Formulation

Purified antibody in PBS with 0.05% sodium azide

LPlunc1 Antibody - Additional Information

Gene ID 92747

Other Names

BPI fold-containing family B member 1, Long palate, lung and nasal epithelium carcinoma-associated protein 1, Von Ebner minor salivary gland protein, VEMSGP, BPIFB1, C20orf114, LPLUNC1

Dilution

E~~1/10000
WB~~1/500 - 1/2000
IHC~~1/200 - 1/1000
IF~~1/200 - 1/1000
FC~~1/200 - 1/400

Storage

Maintain refrigerated at 2-8°C for up to 6 months. For long term storage store at -20°C in small aliquots to prevent freeze-thaw cycles.

Precautions

LPlunc1 Antibody is for research use only and not for use in diagnostic or therapeutic procedures.

LPlunc1 Antibody - Protein Information

Name BPIFB1

Synonyms C20orf114, LPLUNC1

Function

May play a role in innate immunity in mouth, nose and lungs. Binds bacterial lipopolysaccharide (LPS) and modulates the cellular responses to LPS.

Cellular Location

Secreted.

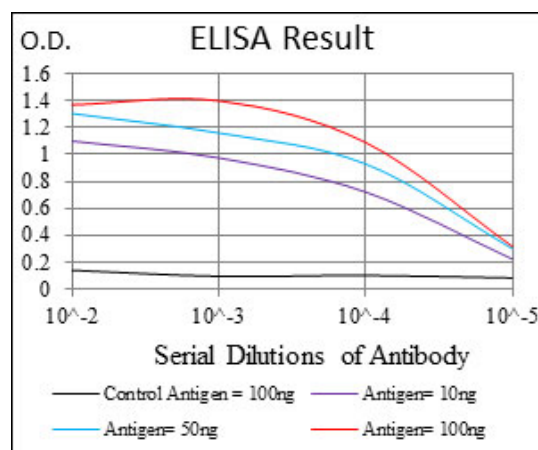
Tissue Location

Detected in duodenum mucosal crypts of cholera patients, near Paneth cells (at protein level).
Detected in trachea, nasal septal epithelium and lung.

LPlunc1 Antibody - Protocols

Provided below are standard protocols that you may find useful for product applications.

- [Western Blot](#)
- [Blocking Peptides](#)
- [Dot Blot](#)
- [Immunohistochemistry](#)
- [Immunofluorescence](#)
- [Immunoprecipitation](#)
- [Flow Cytometry](#)
- [Cell Culture](#)



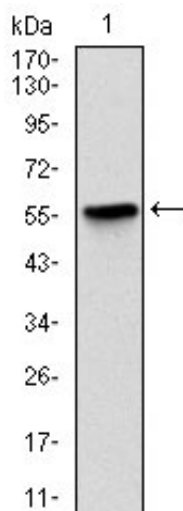


Figure 1: Western blot analysis using LPlunc1 mAb against human LPlunc1 recombinant protein. (Expected MW is 52 kDa)

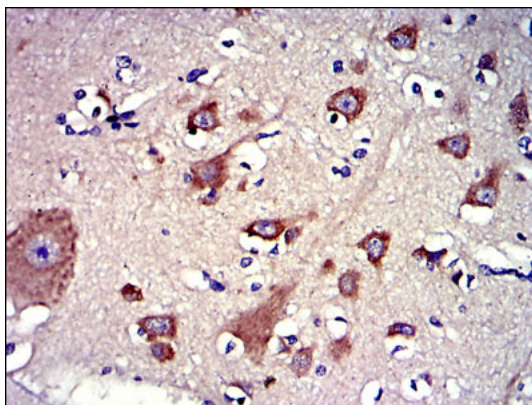


Figure 2: Immunohistochemical analysis of paraffin-embedded brain tissues using LPlunc1 mouse mAb with DAB staining.

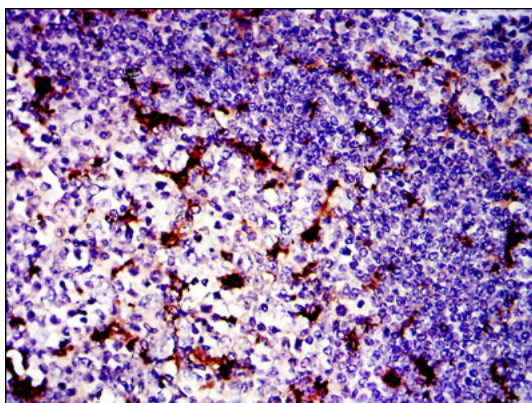


Figure 3: Immunohistochemical analysis of paraffin-embedded tonsil tissues using LPlunc1 mouse mAb with DAB staining.

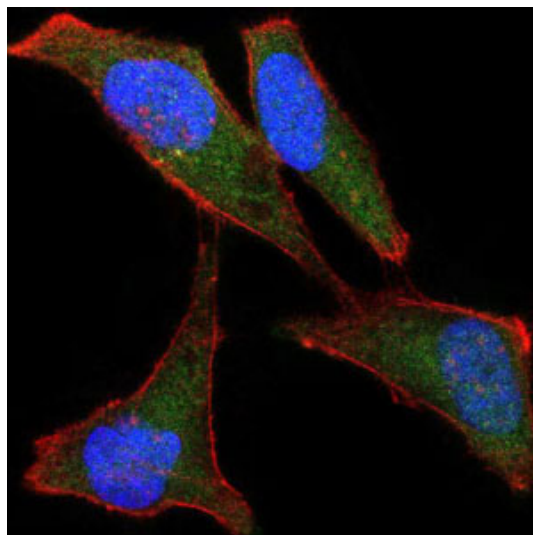


Figure 4: Immunofluorescence analysis of HeLa cells using LPlunc1 mouse mAb (green). Blue: DRAQ5 fluorescent DNA dye. Red: Actin filaments have been labeled with Alexa Fluor-555 phalloidin.

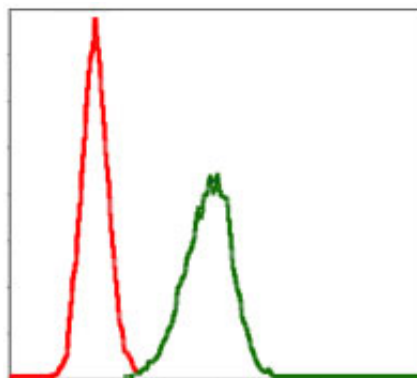


Figure 5: Flow cytometric analysis of HeLa cells using LPlunc1 mouse mAb (green) and negative control (red).

LPlunc1 Antibody - References

1. Genes Immun. 2009 Apr;10(3):267-72.
2. Histochem Cell Biol. 2010 May;133(5):505-15.