

COTL1 Antibody
Purified Mouse Monoclonal Antibody
Catalog # AO1672a**Specification****COTL1 Antibody - Product Information**

Application	WB, FC, E
Primary Accession	Q14019
Reactivity	Human
Host	Mouse
Clonality	Monoclonal
Isotype	IgG1
Calculated MW	16kDa KDa

Description

This gene encodes one of the numerous actin-binding proteins which regulate the actin cytoskeleton. This protein binds F-actin, and also interacts with 5-lipoxygenase, which is the first committed enzyme in leukotriene biosynthesis. Although this gene has been reported to map to chromosome 17 in the Smith-Magenis syndrome region, the best alignments for this gene are to chromosome 16. The Smith-Magenis syndrome region is the site of two related pseudogenes.

Immunogen

Purified recombinant fragment of human COTL1 expressed in E. Coli.

Formulation

Purified antibody in PBS with 0.05% sodium azide

COTL1 Antibody - Additional Information

Gene ID 23406

Other Names

Coactosin-like protein, COTL1, CLP

Dilution

WB~~1/500 - 1/2000

FC~~1/200 - 1/400

E~~1/10000

Storage

Maintain refrigerated at 2-8°C for up to 6 months. For long term storage store at -20°C in small aliquots to prevent freeze-thaw cycles.

Precautions

COTL1 Antibody is for research use only and not for use in diagnostic or therapeutic procedures.

COTL1 Antibody - Protein Information

Name COTL1

Synonyms CLP

Function

Binds to F-actin in a calcium-independent manner. Has no direct effect on actin depolymerization. Acts as a chaperone for ALOX5 (5LO), influencing both its stability and activity in leukotrienes synthesis.

Cellular Location

Cytoplasm. Cytoplasm, cytoskeleton. Nucleus

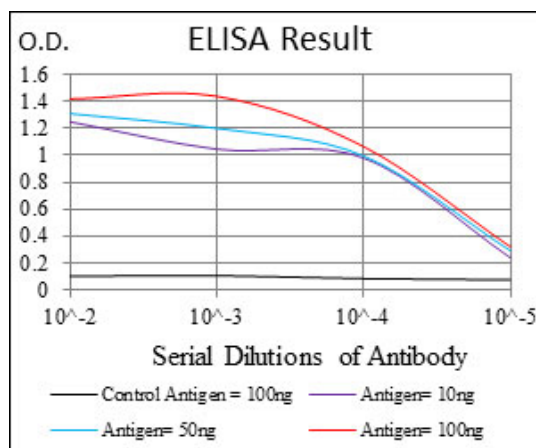
Tissue Location

Widely expressed with highest levels in placenta, lung, kidney and peripheral blood leukocytes and lower levels in brain, liver and pancreas.

COTL1 Antibody - Protocols

Provided below are standard protocols that you may find useful for product applications.

- [Western Blot](#)
- [Blocking Peptides](#)
- [Dot Blot](#)
- [Immunohistochemistry](#)
- [Immunofluorescence](#)
- [Immunoprecipitation](#)
- [Flow Cytometry](#)
- [Cell Culture](#)



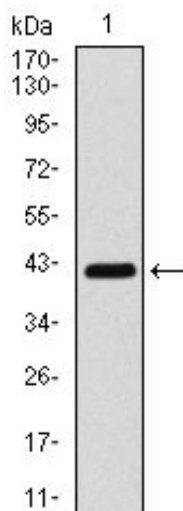


Figure 1: Western blot analysis using COTL1 mAb against human COTL1 (AA: 1-142) recombinant protein. (Expected MW is 16 kDa)

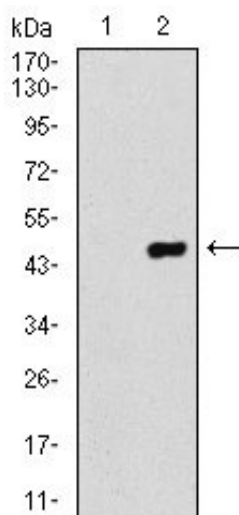


Figure 2: Western blot analysis using COTL1 mAb against HEK293 (1) and COTL1 (AA: 1-142)-hIgGFc transfected HEK293 (2) cell lysate.

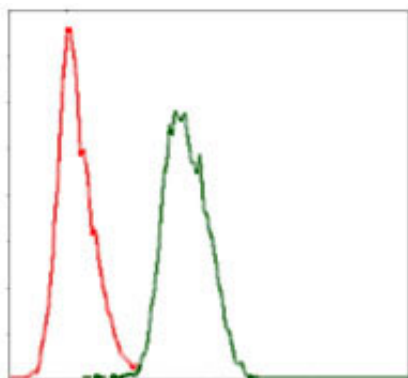


Figure 3: Flow cytometric analysis of HeLa cells using COTL1 mouse mAb (green) and negative control (red).

COTL1 Antibody - References

1. Biochem J. 2009 Dec 14;425(1):265-74.
2. Exp Mol Med. 2009 May 31;41(5):354-61.