

CRP Antibody
Purified Mouse Monoclonal Antibody
Catalog # AO1685a**Specification****CRP Antibody - Product Information**

Application	WB, IHC, FC, E
Primary Accession	P02741
Reactivity	Human
Host	Mouse
Clonality	Monoclonal
Isotype	IgG1
Calculated MW	25kDa KDa

Description

The protein encoded by this gene belongs to the pentaxin family. It is involved in several host defense related functions based on its ability to recognize foreign pathogens and damaged cells of the host and to initiate their elimination by interacting with humoral and cellular effector systems in the blood. Consequently, the level of this protein in plasma increases greatly during acute phase response to tissue injury, infection, or other inflammatory stimuli.

Immunogen

Purified recombinant fragment of human CRP expressed in E. Coli.

Formulation

Ascitic fluid containing 0.03% sodium azide.

CRP Antibody - Additional Information

Gene ID 1401

Other Names

C-reactive protein, C-reactive protein(1-205), CRP, PTX1

Dilution

WB~~1/500 - 1/2000

IHC~~1/200 - 1/1000

FC~~1/200 - 1/400

E~~1/10000

Storage

Maintain refrigerated at 2-8°C for up to 6 months. For long term storage store at -20°C in small aliquots to prevent freeze-thaw cycles.

Precautions

CRP Antibody is for research use only and not for use in diagnostic or therapeutic procedures.

CRP Antibody - Protein Information

Name CRP

Synonyms PTX1

Function

Displays several functions associated with host defense: it promotes agglutination, bacterial capsular swelling, phagocytosis and complement fixation through its calcium-dependent binding to phosphorylcholine. Can interact with DNA and histones and may scavenge nuclear material released from damaged circulating cells.

Cellular Location

Secreted.

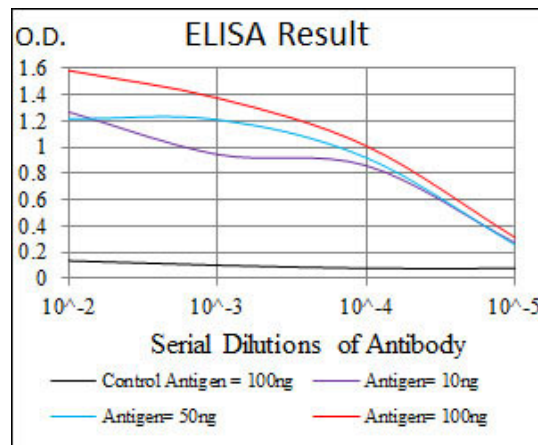
Tissue Location

Found in plasma.

CRP Antibody - Protocols

Provided below are standard protocols that you may find useful for product applications.

- [Western Blot](#)
- [Blocking Peptides](#)
- [Dot Blot](#)
- [Immunohistochemistry](#)
- [Immunofluorescence](#)
- [Immunoprecipitation](#)
- [Flow Cytometry](#)
- [Cell Culture](#)



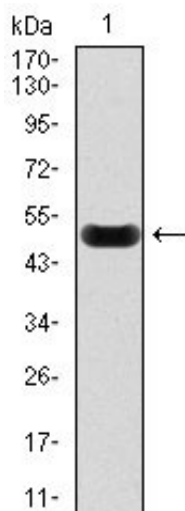


Figure 1: Western blot analysis using CRP mAb against human CRP recombinant protein. (AA: 1-224, Expected MW is 51 kDa)

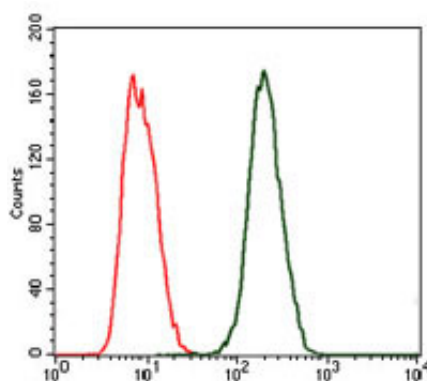


Figure 2: Flow cytometric analysis of MCF-7 cells using CRP mouse mAb (green) and negative control (red).

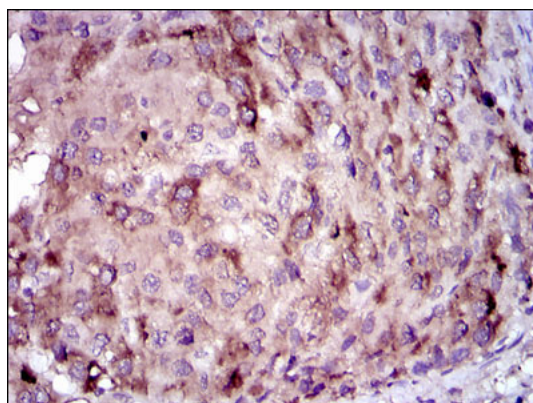


Figure 3: Immunohistochemical analysis of paraffin-embedded liver cancer tissues using CRP mouse mAb with DAB staining.

CRP Antibody - References

1. Clin Cardiol. 2010 Nov;33(11):708-14.
2. Mol Cell Biochem. 2011 Jan;347(1-2):183-9.