

GAB1 Antibody
Purified Mouse Monoclonal Antibody
Catalog # AO1708a**Specification****GAB1 Antibody - Product Information**

Application	WB, IHC, FC, E
Primary Accession	Q13480
Reactivity	Human
Host	Mouse
Clonality	Monoclonal
Isotype	IgG1
Calculated MW	76.6kDa KDa

Description

The protein encoded by this gene is a member of the IRS1-like multisubstrate docking protein family. It is an important mediator of branching tubulogenesis and plays a central role in cellular growth response, transformation and apoptosis. Two transcript variants encoding different isoforms have been found for this gene.

Immunogen

Purified recombinant fragment of human GAB1 expressed in E. Coli.

Formulation

Purified antibody in PBS with 0.05% sodium azide

GAB1 Antibody - Additional Information

Gene ID 2549

Other Names

GRB2-associated-binding protein 1, GRB2-associated binder 1, Growth factor receptor bound protein 2-associated protein 1, GAB1

Dilution

WB~~1/500 - 1/2000
IHC~~1/200 - 1/1000
FC~~1/200 - 1/400
E~~1/10000

Storage

Maintain refrigerated at 2-8°C for up to 6 months. For long term storage store at -20°C in small aliquots to prevent freeze-thaw cycles.

Precautions

GAB1 Antibody is for research use only and not for use in diagnostic or therapeutic procedures.

GAB1 Antibody - Protein Information

Name GAB1

Function

Adapter protein that plays a role in intracellular signaling cascades triggered by activated receptor-type kinases. Plays a role in FGFR1 signaling. Probably involved in signaling by the epidermal growth factor receptor (EGFR) and the insulin receptor (INSR). Involved in the MET/HGF-signaling pathway (PubMed:29408807).

GAB1 Antibody - Protocols

Provided below are standard protocols that you may find useful for product applications.

- [Western Blot](#)
- [Blocking Peptides](#)
- [Dot Blot](#)
- [Immunohistochemistry](#)
- [Immunofluorescence](#)
- [Immunoprecipitation](#)
- [Flow Cytometry](#)
- [Cell Culture](#)

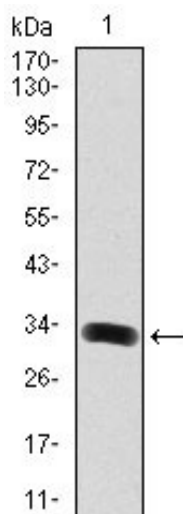
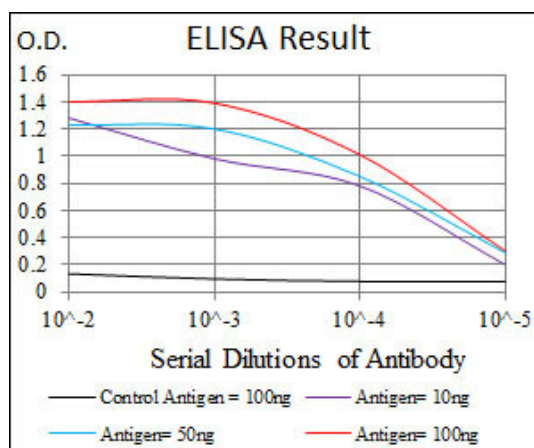


Figure 1: Western blot analysis using GAB1 mAb against human GAB1 (AA: 661-724) recombinant

protein. (Expected MW is 32.4 kDa)

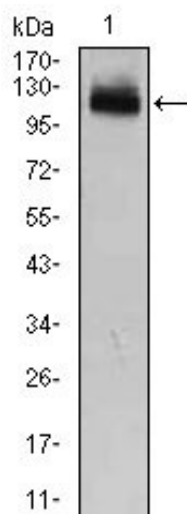


Figure 2: Western blot analysis using GAB1 mouse mAb against HEK293 (1) cell lysate.

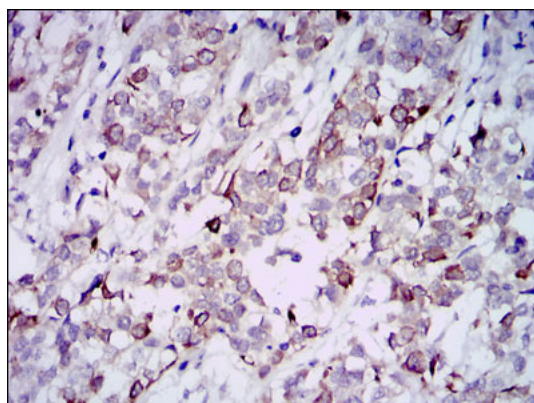


Figure 3: Immunohistochemical analysis of paraffin-embedded bladder cancer tissues using GAB1 mouse mAb with DAB staining.

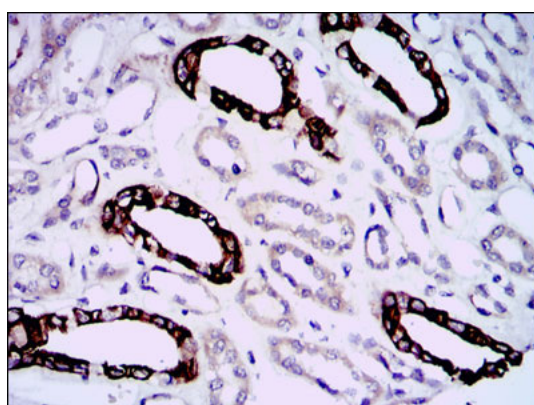


Figure 4: Immunohistochemical analysis of paraffin-embedded kidney tissues using GAB1 mouse mAb with DAB staining.

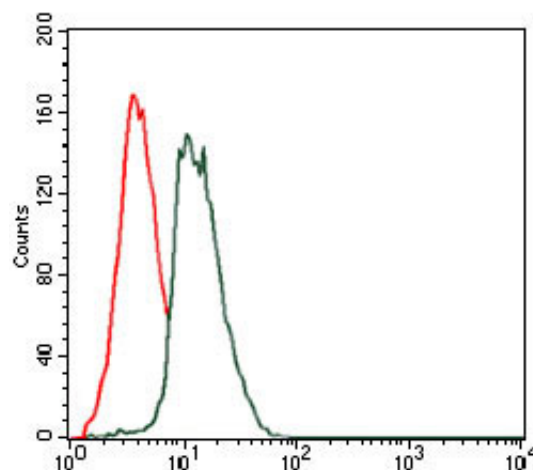


Figure 5: Flow cytometric analysis of Jurkat cells using GAB1 mouse mAb (green) and negative control (red).

GAB1 Antibody - References

Cell Signal. 2009 Dec;21(12):1775-83. Cell. 2009 Jan 23;136(2):352-63.