

**mouse Splunc2 Antibody**  
**Purified Mouse Monoclonal Antibody**  
**Catalog # AO1709a****Specification****mouse Splunc2 Antibody - Product Information**

Application	WB, IHC, FC, ICC, E
Primary Accession	<a href="#">Q96DR5</a>
Reactivity	Human
Host	Mouse
Clonality	Monoclonal
Isotype	IgG1
<b>Description</b>	
N/A	

**Immunogen**

Purified recombinant fragment of mouse Splunc2 expressed in E. Coli. <br />

**Formulation**

Purified antibody in PBS with 0.05% sodium azide

**mouse Splunc2 Antibody - Additional Information**

**Gene ID** 140683

**Dilution**

WB~~1/500 - 1/2000  
IHC~~1/200 - 1/1000  
FC~~1/200 - 1/400  
ICC~~N/A  
E~~1/10000

**Storage**

Maintain refrigerated at 2-8°C for up to 6 months. For long term storage store at -20°C in small aliquots to prevent freeze-thaw cycles.

**Precautions**

mouse Splunc2 Antibody is for research use only and not for use in diagnostic or therapeutic procedures.

**mouse Splunc2 Antibody - Protein Information**

**Name** BPIFA2

**Synonyms** C20orf70, SPLUNC2

**Function**

Has strong antibacterial activity against P.aeruginosa.

#### Cellular Location

Secreted.

#### Tissue Location

Detected in submandibular gland. Secreted into saliva.

### mouse Splunc2 Antibody - Protocols

Provided below are standard protocols that you may find useful for product applications.

- [Western Blot](#)
- [Blocking Peptides](#)
- [Dot Blot](#)
- [Immunohistochemistry](#)
- [Immunofluorescence](#)
- [Immunoprecipitation](#)
- [Flow Cytometry](#)
- [Cell Culture](#)

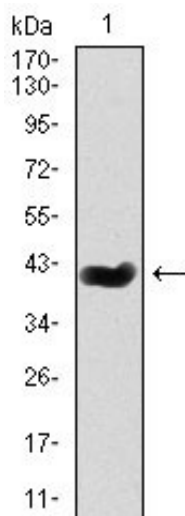
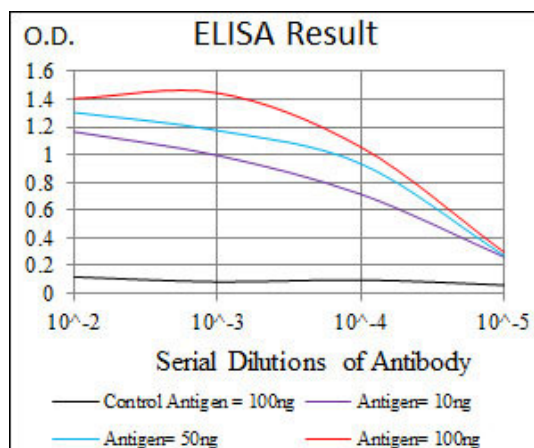


Figure 1: Western blot analysis using mouse Splunc2 mAb against mouse Splunc2 (AA: 16-169) recombinant protein. (Expected MW is 41.6 kDa)

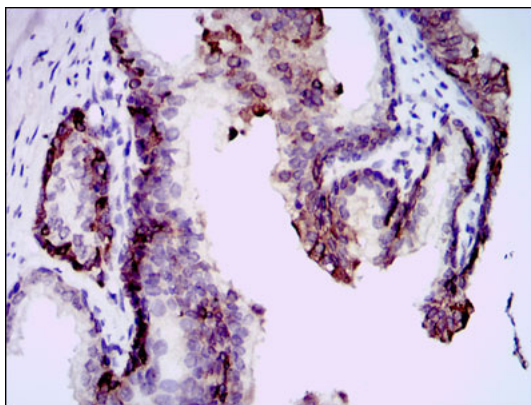


Figure 2: Immunohistochemical analysis of paraffin-embedded prostate tissues using mouse Splunc2 mouse mAb with DAB staining.

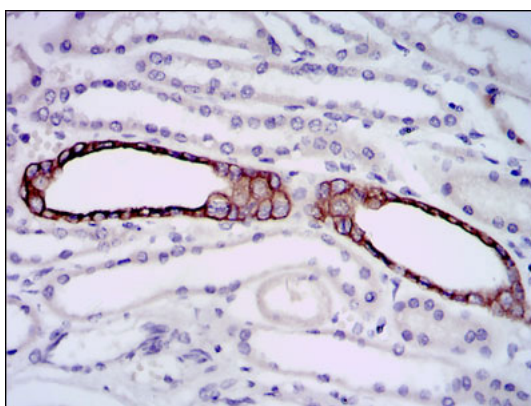


Figure 3: Immunohistochemical analysis of paraffin-embedded kidney tissues using mouse Splunc2 mouse mAb with DAB staining.

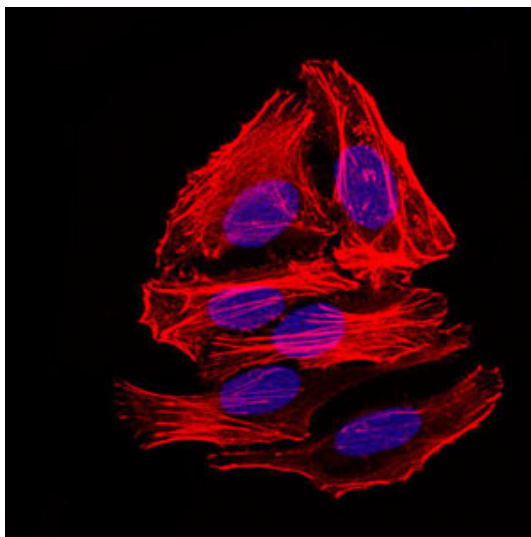


Figure 4: Immunofluorescence analysis of HepG2 cells. Blue: DRAQ5 fluorescent DNA dye. Red: Actin filaments have been labeled with Alexa Fluor-555 phalloidin.

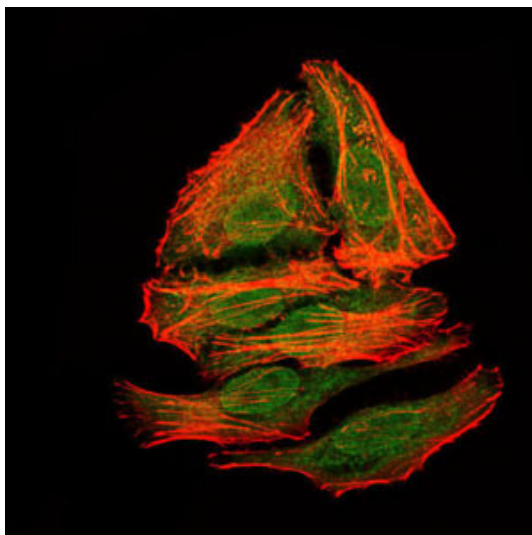


Figure 5: Immunofluorescence analysis of HepG2 cells using mouse Splunc2 mouse mAb (green). Red: Actin filaments have been labeled with Alexa Fluor-555 phalloidin.

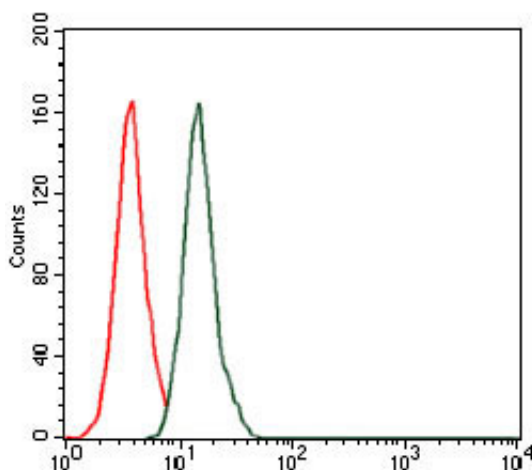


Figure 6: Flow cytometric analysis of HeLa cells using mouse Splunc2 mouse mAb (green) and negative control (red).

#### mouse Splunc2 Antibody - References

N/A

#### mouse Splunc2 Antibody - Citations

- [A gene signature-based approach identifies mTOR as a regulator of p73.](#)