

troponin T2 Antibody
Purified Mouse Monoclonal Antibody
Catalog # AO1711a**Specification****troponin T2 Antibody - Product Information**

Application	WB, FC, E
Primary Accession	P45379
Reactivity	Human
Host	Mouse
Clonality	Monoclonal
Isotype	IgG1
Calculated MW	36kDa KDa

Description

The protein encoded by this gene is the tropomyosin-binding subunit of the troponin complex, which is located on the thin filament of striated muscles and regulates muscle contraction in response to alterations in intracellular calcium ion concentration. Mutations in this gene have been associated with familial hypertrophic cardiomyopathy as well as with dilated cardiomyopathy. Transcripts for this gene undergo alternative splicing that results in many tissue-specific isoforms, however, the full-length nature of some of these variants has not yet been determined.

Immunogen

Purified recombinant fragment of human troponin T2 expressed in E. Coli.

Formulation

Ascitic fluid containing 0.03% sodium azide.

troponin T2 Antibody - Additional Information

Gene ID 7139

Other Names

Troponin T, cardiac muscle, TnTc, Cardiac muscle troponin T, cTnT, TNNT2

Dilution

WB~~1/500 - 1/2000

FC~~1/200 - 1/400

E~~1/10000

Storage

Maintain refrigerated at 2-8°C for up to 6 months. For long term storage store at -20°C in small aliquots to prevent freeze-thaw cycles.

Precautions

troponin T2 Antibody is for research use only and not for use in diagnostic or therapeutic procedures.

troponin T2 Antibody - Protein Information

Name TNNT2**Function**

Troponin T is the tropomyosin-binding subunit of troponin, the thin filament regulatory complex which confers calcium-sensitivity to striated muscle actomyosin ATPase activity.

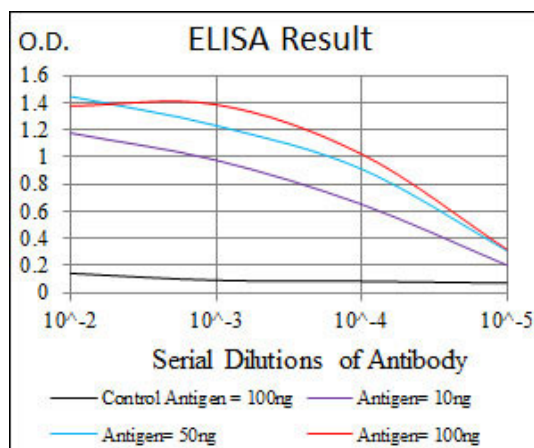
Tissue Location

Heart. The fetal heart shows a greater expression in the atrium than in the ventricle, while the adult heart shows a greater expression in the ventricle than in the atrium. Isoform 6 predominates in normal adult heart. Isoforms 1, 7 and 8 are expressed in fetal heart. Isoform 7 is also expressed in failing adult heart

troponin T2 Antibody - Protocols

Provided below are standard protocols that you may find useful for product applications.

- [Western Blot](#)
- [Blocking Peptides](#)
- [Dot Blot](#)
- [Immunohistochemistry](#)
- [Immunofluorescence](#)
- [Immunoprecipitation](#)
- [Flow Cytometry](#)
- [Cell Culture](#)



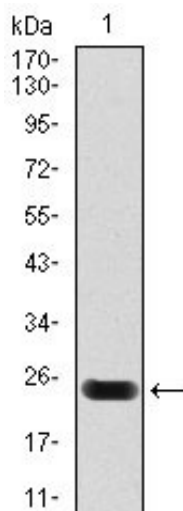


Figure 1: Western blot analysis using troponin T2 mAb against human troponin T2 (AA: 88-249) recombinant protein. (Expected MW is 25.1 kDa)

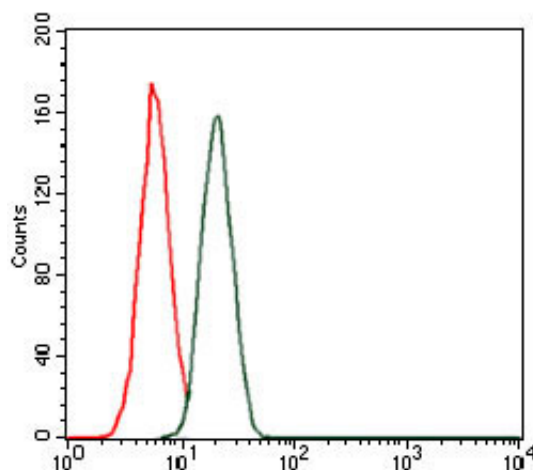


Figure 2: Flow cytometric analysis of MCF-7 cells using troponin T2 mouse mAb (green) and negative control (red).

troponin T2 Antibody - References

Cardiovasc Res. 2010 Jun 1;86(3):452-60. Circ Cardiovasc Genet. 2009 Aug;2(4):306-13.