

RAB4A Antibody
Purified Mouse Monoclonal Antibody
Catalog # AO1720a**Specification****RAB4A Antibody - Product Information**

Application	E, WB, IHC, FC
Primary Accession	P20338
Reactivity	Human, Mouse, Monkey
Host	Mouse
Clonality	Monoclonal
Isotype	IgG1
Calculated MW	23.8kDa KDa

Description

The protein encoded by this gene belongs to the rab family. Rab4A protein is involved in the regulation of procathepsin L secretion, it was either inhibited by expression of a Rab4A dominant-negative mutant or increased by overexpression of the wild-type Rab4A in human melanoma cells.

Immunogen

Purified recombinant fragment of human RAB4A expressed in E. Coli.

Formulation

Purified antibody in PBS with 0.05% sodium azide

RAB4A Antibody - Additional Information

Gene ID 5867

Other Names

Ras-related protein Rab-4A, RAB4A, RAB4

Dilution

E~~1/10000
WB~~1/500 - 1/2000
IHC~~1/200 - 1/1000
FC~~1/200 - 1/400

Storage

Maintain refrigerated at 2-8°C for up to 6 months. For long term storage store at -20°C in small aliquots to prevent freeze-thaw cycles.

Precautions

RAB4A Antibody is for research use only and not for use in diagnostic or therapeutic procedures.

RAB4A Antibody - Protein Information

Name RAB4A

Synonyms RAB4

Function

Small GTPase which cycles between an active GTP-bound and an inactive GDP-bound state (PubMed:15907487, PubMed:16034420). Involved in protein transport (PubMed:29425100). Plays a role in vesicular traffic. Mediates VEGFR2 endosomal trafficking to enhance VEGFR2 signaling (PubMed:29425100). Acts as a regulator of platelet alpha- granule release during activation and aggregation of platelets (By similarity).

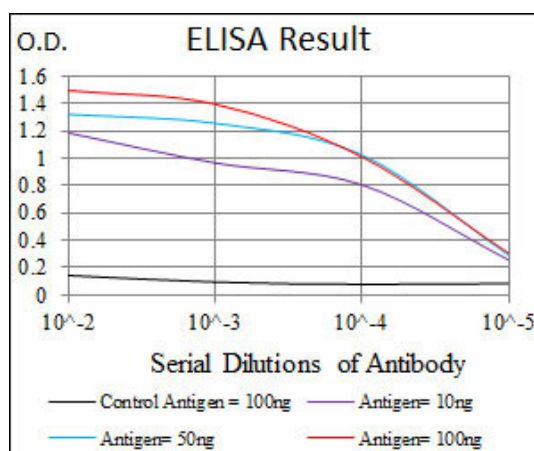
Cellular Location

Membrane; Peripheral membrane protein. Cytoplasm Early endosome membrane {ECO:0000250|UniProtKB:P05714}; Peripheral membrane protein {ECO:0000250|UniProtKB:P05714}; Recycling endosome membrane {ECO:0000250|UniProtKB:P05714}; Peripheral membrane protein {ECO:0000250|UniProtKB:P05714}. Note=Generally associated with membranes. Cytoplasmic when phosphorylated by CDK1

RAB4A Antibody - Protocols

Provided below are standard protocols that you may find useful for product applications.

- [Western Blot](#)
- [Blocking Peptides](#)
- [Dot Blot](#)
- [Immunohistochemistry](#)
- [Immunofluorescence](#)
- [Immunoprecipitation](#)
- [Flow Cytometry](#)
- [Cell Culture](#)



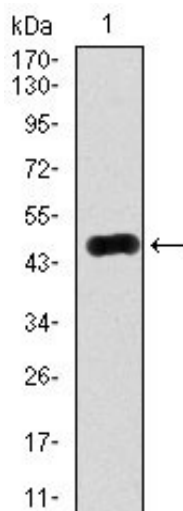


Figure 1: Western blot analysis using RAB4A mAb against human RAB4A (AA: 22-218) recombinant protein. (Expected MW is 47.9 kDa)

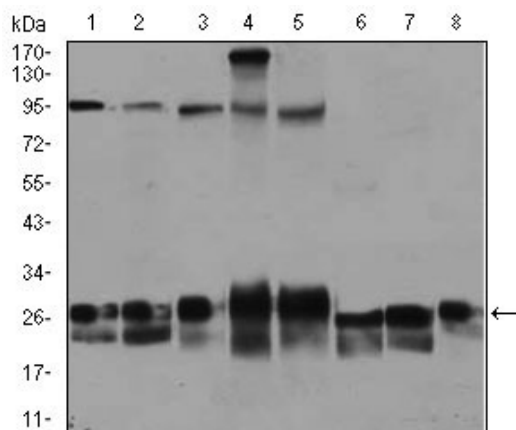


Figure 2: Western blot analysis using RAB4A mouse mAb against Jurkat (1), HeLa (2), A549 (3), HEK293 (4), K562 (5), NIH3T3 (6), PC-12 (7), and COS7 (8) cell lysate.

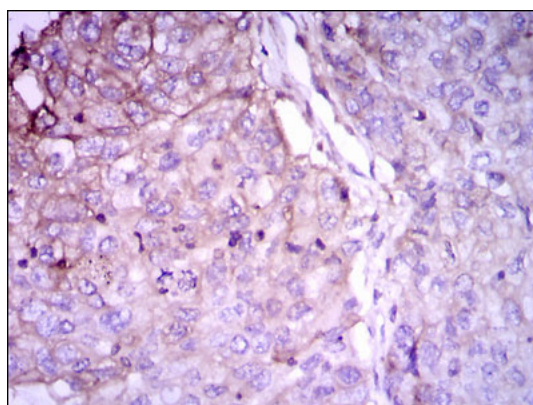


Figure 3: Immunohistochemical analysis of paraffin-embedded lung cancer tissues using RAB4A mouse mAb with DAB staining.

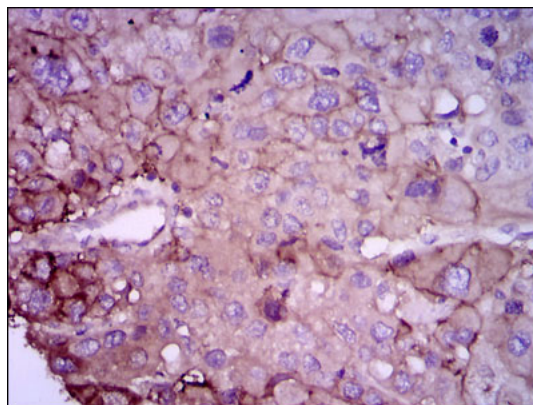


Figure 4: Immunohistochemical analysis of paraffin-embedded liver cancer tissues using RAB4A mouse mAb with DAB staining.

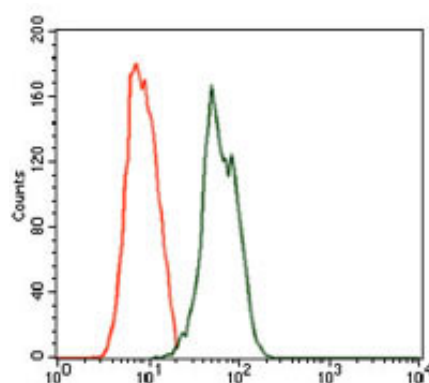


Figure 5: Flow cytometric analysis of MCF-7 cells using RAB4A mouse mAb (green) and negative control (red).

RAB4A Antibody - References

1. Biochem J. 2011 Jul 1;437(1):97-107.
2. Int J Cancer. 2011 Jan 1;128(1):192-205.