

NR6A1 Antibody
Purified Mouse Monoclonal Antibody
Catalog # AO1742a**Specification****NR6A1 Antibody - Product Information**

Application	E, WB, IF, FC, IHC
Primary Accession	Q15406
Reactivity	Human
Host	Mouse
Clonality	Monoclonal
Isotype	IgG1
Calculated MW	54.3kDa KDa

Description

This gene encodes an orphan nuclear receptor which is a member of the nuclear hormone receptor family. Its expression pattern suggests that it may be involved in neurogenesis and germ cell development. The protein can homodimerize and bind DNA, but in vivo targets have not been identified. The gene expresses at least alternatively spliced transcript variants.

Immunogen

Purified recombinant fragment of human NR6A1 (AA: 65-118) expressed in E. Coli.

Formulation

Purified antibody in PBS with 0.05% sodium azide

NR6A1 Antibody - Additional Information

Gene ID 2649

Other Names

Nuclear receptor subfamily 6 group A member 1, Germ cell nuclear factor, GCNF, hGCNF, Retinoid receptor-related testis-specific receptor, RTR, hRTR, NR6A1, GCNF

Dilution

E~~1/10000
WB~~1/500 - 1/2000
IF~~1/400
FC~~1/200 - 1/400
IHC~~1/200 - 1/1000

Storage

Maintain refrigerated at 2-8°C for up to 6 months. For long term storage store at -20°C in small aliquots to prevent freeze-thaw cycles.

Precautions

NR6A1 Antibody is for research use only and not for use in diagnostic or therapeutic procedures.

NR6A1 Antibody - Protein Information

Name NR6A1

Synonyms GCNF

Function

Orphan nuclear receptor. Binds to a response element containing the sequence 5'-TCAAGGTCA-3'. May be involved in the regulation of gene expression in germ cell development during gametogenesis (By similarity).

Cellular Location

Nucleus.

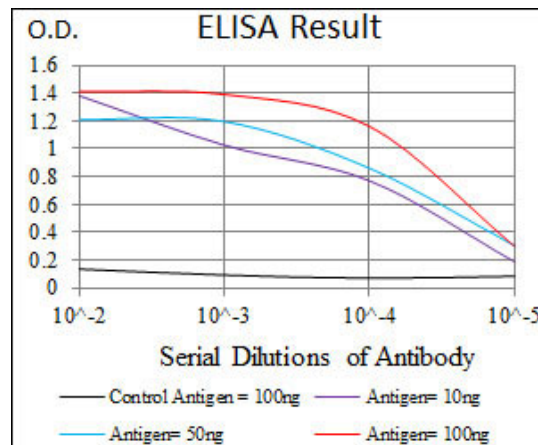
Tissue Location

Shows highest expression in the germ cells of the adult testis.

NR6A1 Antibody - Protocols

Provided below are standard protocols that you may find useful for product applications.

- [Western Blot](#)
- [Blocking Peptides](#)
- [Dot Blot](#)
- [Immunohistochemistry](#)
- [Immunofluorescence](#)
- [Immunoprecipitation](#)
- [Flow Cytometry](#)
- [Cell Culture](#)



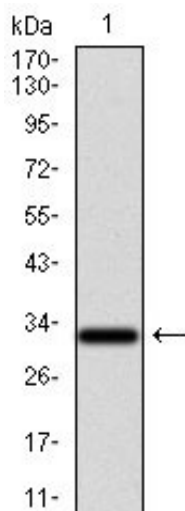


Figure 1: Western blot analysis using NR6A1 mAb against human NR6A1 recombinant protein. (Expected MW is 32.4 kDa)

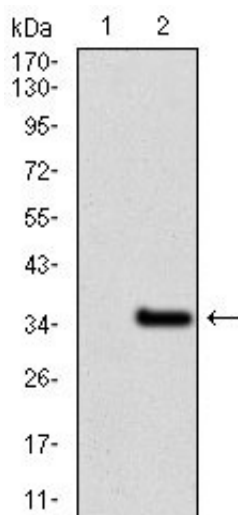


Figure 2: Western blot analysis using NR6A1 mAb against HEK293 (1) and NR6A1 (AA: 65-118)-hlgGfc transfected HEK293 (2) cell lysate.

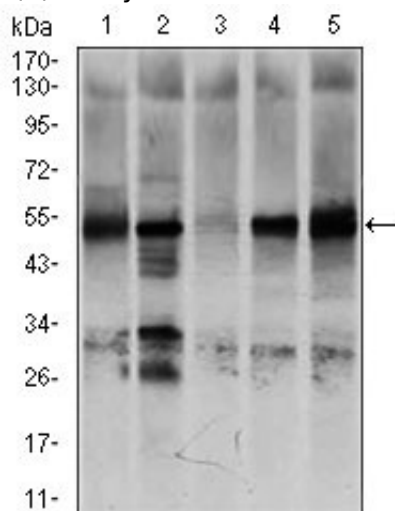


Figure 3: Western blot analysis using NR6A1 mouse mAb against K562 (1), NTERA-2 (2), HEK293 (3), HUVE-12 (4), and HeLa (5) cell lysate.

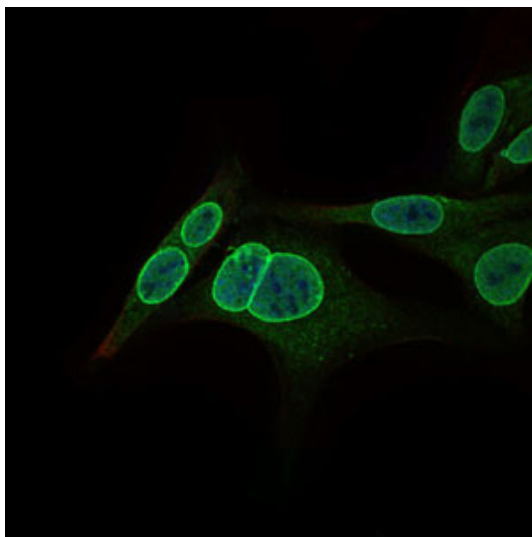


Figure 4: Immunofluorescence analysis of HepG2 cells using NR6A1 mouse mAb (green). Blue: DRAQ5 fluorescent DNA dye.

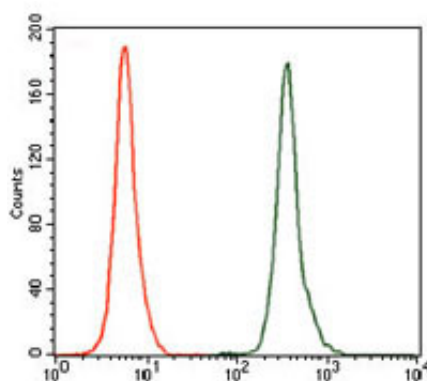


Figure 5: Flow cytometric analysis of K562 cells using NR6A1 mouse mAb (green) and negative control (red).

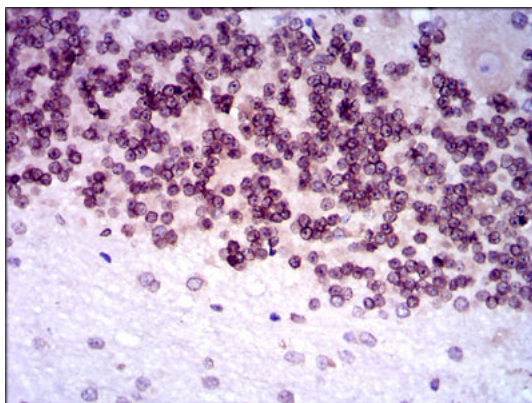


Figure 6: Immunohistochemical analysis of paraffin-embedded cerebellum tissues using NR6A1 mouse mAb with DAB staining.

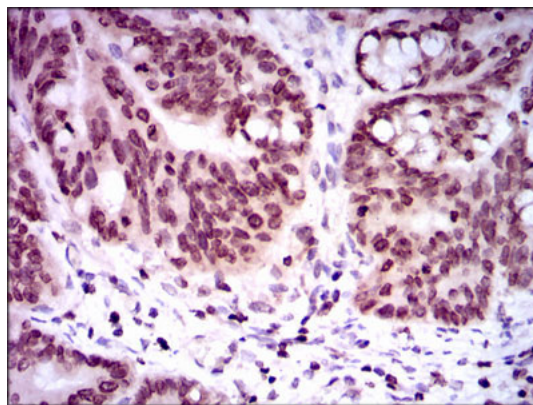


Figure 7: Immunohistochemical analysis of paraffin-embedded rectum cancer tissues using NR6A1 mouse mAb with DAB staining.

NR6A1 Antibody - References

1. Biochem Biophys Res Commun. 2010 Dec 10;403(2):178-83. 2. Cell. 2005 Sep 23;122(6):957-68.