

PIK3R1 Antibody
Purified Mouse Monoclonal Antibody
Catalog # AO1753a**Specification****PIK3R1 Antibody - Product Information**

Application	WB, FC, E
Primary Accession	P27986
Reactivity	Human, Mouse
Host	Mouse
Clonality	Monoclonal
Isotype	IgG1
Calculated MW	83.6kDa KDa

Description

Phosphatidylinositol 3-kinase phosphorylates the inositol ring of phosphatidylinositol at the 3-prime position. The enzyme comprises a 110 kD catalytic subunit and a regulatory subunit of either 85, 55, or 50 kD. This gene encodes the 85 kD regulatory subunit. Phosphatidylinositol 3-kinase plays an important role in the metabolic actions of insulin, and a mutation in this gene has been associated with insulin resistance. Alternative splicing of this gene results in four transcript variants encoding different isoforms.

Immunogen

Purified recombinant fragment of human PIK3R1 (AA: 159-388) expressed in E. Coli.

Formulation

Purified antibody in PBS with 0.05% sodium azide

PIK3R1 Antibody - Additional Information

Gene ID 5295

Other Names

Phosphatidylinositol 3-kinase regulatory subunit alpha, PI3-kinase regulatory subunit alpha, PI3K regulatory subunit alpha, PtdIns-3-kinase regulatory subunit alpha, Phosphatidylinositol 3-kinase 85 kDa regulatory subunit alpha, PI3-kinase subunit p85-alpha, PtdIns-3-kinase regulatory subunit p85-alpha, PIK3R1, GRB1

Dilution

WB~~1/500 - 1/2000

FC~~1/200 - 1/400

E~~1/10000

Storage

Maintain refrigerated at 2-8°C for up to 6 months. For long term storage store at -20°C in small aliquots to prevent freeze-thaw cycles.

Precautions

PIK3R1 Antibody is for research use only and not for use in diagnostic or therapeutic procedures.

PIK3R1 Antibody - Protein Information

Name PIK3R1

Synonyms GRB1

Function

Binds to activated (phosphorylated) protein-Tyr kinases, through its SH2 domain, and acts as an adapter, mediating the association of the p110 catalytic unit to the plasma membrane. Necessary for the insulin-stimulated increase in glucose uptake and glycogen synthesis in insulin-sensitive tissues. Plays an important role in signaling in response to FGFR1, FGFR2, FGFR3, FGFR4, KITLG/SCF, KIT, PDGFRA and PDGFRB. Likewise, plays a role in ITGB2 signaling (PubMed:17626883, PubMed:19805105, PubMed:7518429). Modulates the cellular response to ER stress by promoting nuclear translocation of XBP1 isoform 2 in a ER stress- and/or insulin-dependent manner during metabolic overloading in the liver and hence plays a role in glucose tolerance improvement (PubMed:20348923).

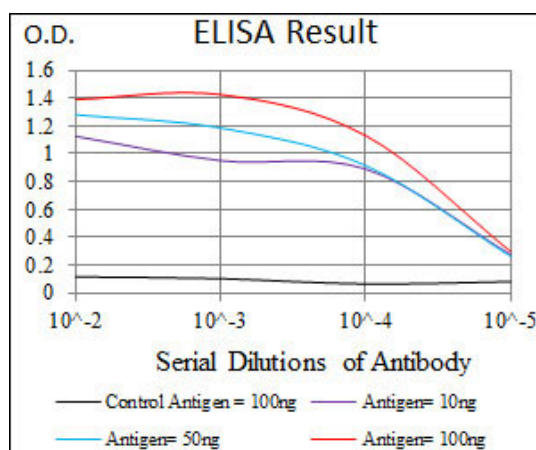
Tissue Location

Isoform 2 is expressed in skeletal muscle and brain, and at lower levels in kidney and cardiac muscle. Isoform 2 and isoform 4 are present in skeletal muscle (at protein level)

PIK3R1 Antibody - Protocols

Provided below are standard protocols that you may find useful for product applications.

- [Western Blot](#)
- [Blocking Peptides](#)
- [Dot Blot](#)
- [Immunohistochemistry](#)
- [Immunofluorescence](#)
- [Immunoprecipitation](#)
- [Flow Cytometry](#)
- [Cell Culture](#)



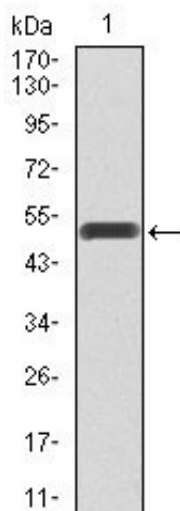


Figure 1: Western blot analysis using PIK3R1 mAb against human PIK3R1 recombinant protein. (Expected MW is 53.4 kDa)

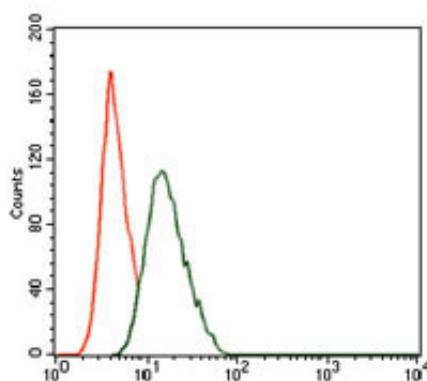


Figure 4: Flow cytometric analysis of NIH3T3 cells using PIK3R1 mouse mAb (green) and negative control (red).

PIK3R1 Antibody - References

1.Cancer Epidemiol Biomarkers Prev. 2011 May;20(5):923-33.2.Cancer Res. 2010 Jul 1;70(13):5305-15.