

**TRIP6 Antibody**  
**Purified Mouse Monoclonal Antibody**  
**Catalog # AO1771a****Specification****TRIP6 Antibody - Product Information**

Application	E, WB, FC
Primary Accession	<a href="#">Q15654</a>
Reactivity	Human
Host	Mouse
Clonality	Monoclonal
Isotype	IgG1
Calculated MW	50.3kDa KDa

**Description**

This gene is a member of the zyxin family and encodes a protein with three LIM zinc-binding domains. This protein localizes to focal adhesion sites and along actin stress fibers. Recruitment of this protein to the plasma membrane occurs in a lysophosphatidic acid (LPA)-dependent manner and it regulates LPA-induced cell migration. Alternatively spliced variants which encode different protein isoforms have been described; however, not all variants have been fully characterized.

**Immunogen**

Purified recombinant fragment of human TRIP6 (AA: 107-291) expressed in E. Coli.

**Formulation**

Purified antibody in PBS with 0.05% sodium azide

**TRIP6 Antibody - Additional Information**

**Gene ID** 7205

**Other Names**

Thyroid receptor-interacting protein 6, TR-interacting protein 6, TRIP-6, Opa-interacting protein 1, OIP-1, Zyxin-related protein 1, ZRP-1, TRIP6, OIP1

**Dilution**

E~~1/10000  
WB~~1/500 - 1/2000  
FC~~1/200 - 1/400

**Storage**

Maintain refrigerated at 2-8°C for up to 6 months. For long term storage store at -20°C in small aliquots to prevent freeze-thaw cycles.

**Precautions**

TRIP6 Antibody is for research use only and not for use in diagnostic or therapeutic procedures.

**TRIP6 Antibody - Protein Information**

**Name** TRIP6

**Synonyms** OIP1

**Function**

Relays signals from the cell surface to the nucleus to weaken adherens junction and promote actin cytoskeleton reorganization and cell invasiveness. Involved in lysophosphatidic acid-induced cell adhesion and migration. Acts as a transcriptional coactivator for NF- kappa-B and JUN, and mediates the transrepression of these transcription factors induced by glucocorticoid receptor.

**Cellular Location**

Cytoplasm, cytoskeleton. Cell junction, focal adhesion. Nucleus. Cytoplasm Note=Shuttles between nucleus and cytoplasm (PubMed:16624523) Colocalizes with actin (PubMed:10826496).

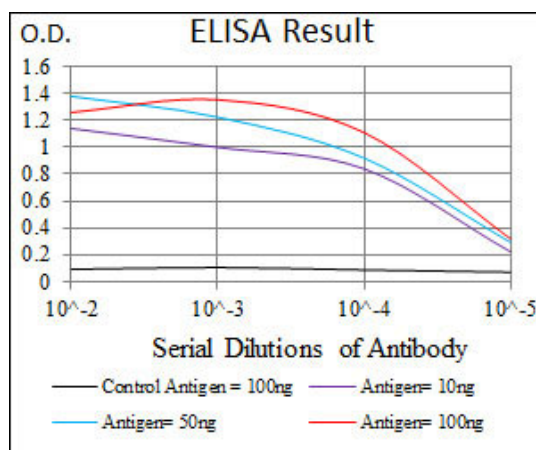
**Tissue Location**

Abundantly expressed in kidney, liver and lung. Lower levels in heart, placenta and pancreas. Expressed in colonic epithelial cells. Up-regulated in colonic tumors

**TRIP6 Antibody - Protocols**

Provided below are standard protocols that you may find useful for product applications.

- [Western Blot](#)
- [Blocking Peptides](#)
- [Dot Blot](#)
- [Immunohistochemistry](#)
- [Immunofluorescence](#)
- [Immunoprecipitation](#)
- [Flow Cytometry](#)
- [Cell Culture](#)



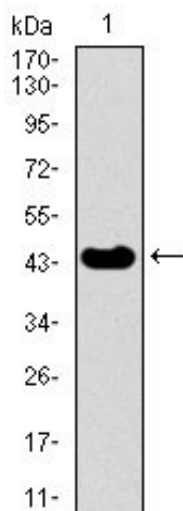


Figure 1: Western blot analysis using TRIP6 mAb against human TRIP6 recombinant protein. (Expected MW is 44.4 kDa)

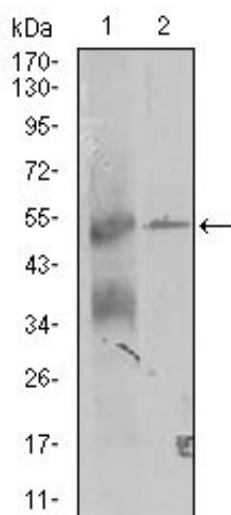


Figure 2: Western blot analysis using TRIP6 mouse mAb against K562 and A431 (2) cell lysate.

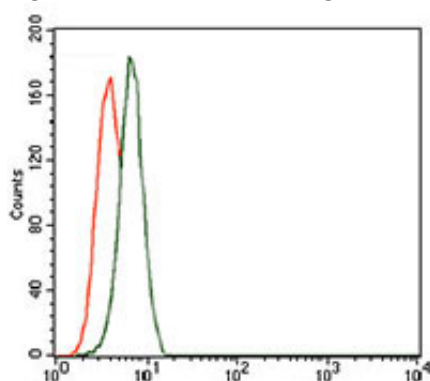


Figure 3: Flow cytometric analysis of K562 cells using TRIP6 mouse mAb (green) and negative control (red).

## TRIP6 Antibody - References

1. Biol Cell. 2011 Dec 1;103(12):573-91. 2. Mol Cell Biol. 2010 Dec;30(23):5582-96.

