

SCGB1A1 Antibody
Purified Mouse Monoclonal Antibody
Catalog # AO1772a**Specification****SCGB1A1 Antibody - Product Information**

Application	E, WB, FC
Primary Accession	P11684
Reactivity	Human
Host	Mouse
Clonality	Monoclonal
Isotype	IgG1
Calculated MW	10kDa KDa

Description

This gene encodes a member of the secretoglobulin family of small secreted proteins. The encoded protein has been implicated in numerous functions including anti-inflammation, inhibition of phospholipase A2 and the sequestering of hydrophobic ligands. Defects in this gene are associated with a susceptibility to asthma.

Immunogen

Purified recombinant fragment of human SCGB1A1 (AA: 26-91) expressed in E. Coli.

Formulation

Purified antibody in PBS with 0.05% sodium azide

SCGB1A1 Antibody - Additional Information

Gene ID 7356

Other Names

Uteroglobin, Clara cell phospholipid-binding protein, CCPBP, Clara cells 10 kDa secretory protein, CC10, Secretoglobulin family 1A member 1, Urinary protein 1, UP-1, UP1, Urine protein 1, SCGB1A1, CC10, CCSP, UGB

Dilution

E~~1/10000
WB~~1/500 - 1/2000
FC~~1/200 - 1/400

Storage

Maintain refrigerated at 2-8°C for up to 6 months. For long term storage store at -20°C in small aliquots to prevent freeze-thaw cycles.

Precautions

SCGB1A1 Antibody is for research use only and not for use in diagnostic or therapeutic procedures.

SCGB1A1 Antibody - Protein Information

Name SCGB1A1

Synonyms CC10, CCSP, UGB

Function

Binds phosphatidylcholine, phosphatidylinositol, polychlorinated biphenyls (PCB) and weakly progesterone, potent inhibitor of phospholipase A2.

Cellular Location

Secreted.

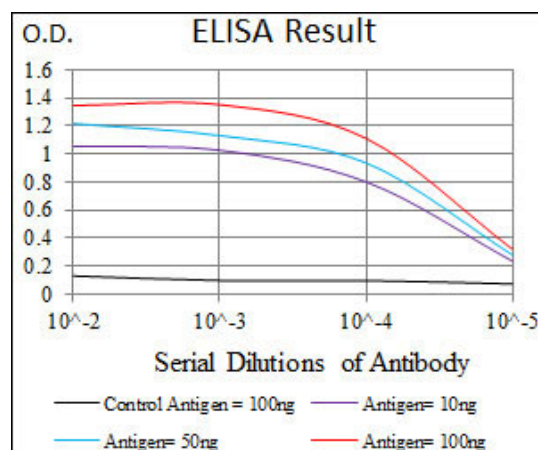
Tissue Location

Club cells (nonciliated cells of the surface epithelium of the pulmonary airways)

SCGB1A1 Antibody - Protocols

Provided below are standard protocols that you may find useful for product applications.

- [Western Blot](#)
- [Blocking Peptides](#)
- [Dot Blot](#)
- [Immunohistochemistry](#)
- [Immunofluorescence](#)
- [Immunoprecipitation](#)
- [Flow Cytometry](#)
- [Cell Culture](#)



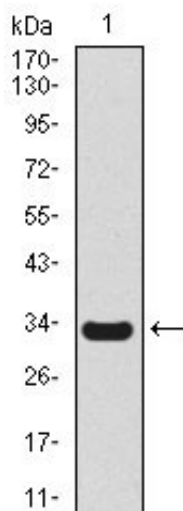


Figure 1: Western blot analysis using SCGB1A1 mAb against human SCGB1A1 recombinant protein. (Expected MW is 33.4 kDa)

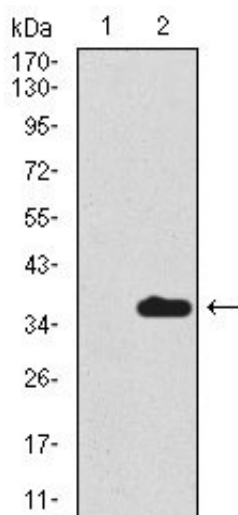


Figure 2: Western blot analysis using SCGB1A1 mAb against HEK293 (1) and SCGB1A1 (AA: 26-91)-hlgGfc transfected HEK293 (2) cell lysate.

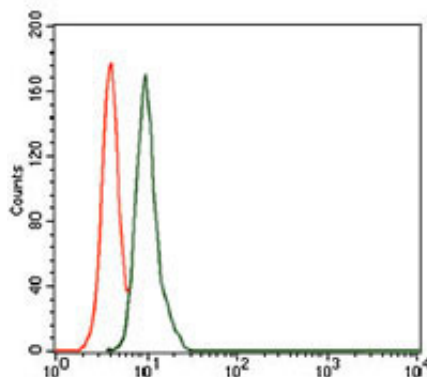


Figure 3: Flow cytometric analysis of A549 cells using SCGB1A1 mouse mAb (green) and negative control (red).

SCGB1A1 Antibody - References

1. Transplantation. 2010 Aug 15;90(3):340-2. 2. Neonatology. 2010;97(3):228-34.

